



**CUSTOM SIZES AVAILABLE!**

Stockton Custom Fabrication

877-786-2587

custom@StocktonProducts.com



## SDE: #12 Soffit Drip Edge®

- Custom Sizes Available, Contact Customer Service For Details
- *Water Tested per ASTM E1105*
- SUPERIOR® Moisture Protection
- No Weep Holes
- Available Curved Upon Request
- Available in Aluminum (A), Copper (C), Galvanized Steel (GS), Bonderized (BN), Galvalume® (GVM), Stainless Steel (SS) or Zinc (Z)

The #12 drip molding is designed to be used as a drip molding at the fascia/soffit transition as well as at recessed window conditions to provide a decorative drip edge and plaster stop.

**Note:** Factory curving is available, but limited, so please contact customer service for more information.

### Most Common Sizes

**X Sizes:** 5/8", 3/4", 7/8" or 1 3/8"

**Y Sizes:** 2 1/2", 3 1/2" or 4"

**Length:** 120"

### Materials And Finishes:

Details: [stpro.us/MET](http://stpro.us/MET)

Aluminum (A), Copper (C), Galvanized Steel (GS), Bonderized (BN), Galvalume® (GVM), Stainless Steel (SS) or Zinc (Z)

### ASTM Codes:

Details: [stpro.us/ASTM](http://stpro.us/ASTM)

All Accessories are fabricated from prime galvanized steel G90 zinc coating by the hot dipped method, conforming to steel and coating specification ASTM A-653/A-653M or zinc alloy meeting ASTM B-69. Stainless Steel A480/A480M A580M (Stainless Steel) For installation and placement instructions refer to ASTM C1063, C841 and C926.

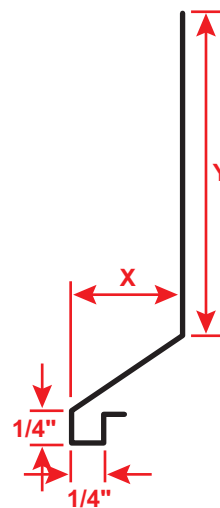
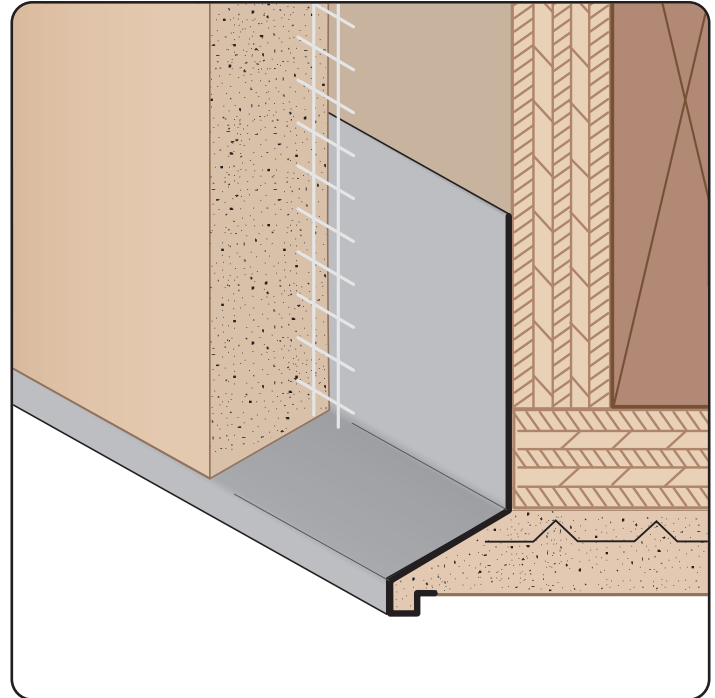
### Most Common Part Numbers:

**SDE078 312** SDE: X=7/8, Y=3 1/2, GS, 10'

**SDE078 312SS** SDE: X=7/8, Y=3 1/2, SS, 10'

**SDE078 400** SDE: X=7/8, Y=4, GS, 10'

**SDE078 400SS** SDE: X=7/8, Y=4, SS, 10'



**SUPERIOR®**  
Moisture  
Protection

**QUOTE**

Company: \_\_\_\_\_  
Name: \_\_\_\_\_  
Address: \_\_\_\_\_  
City: \_\_\_\_\_  
State/ZIP: \_\_\_\_\_  
Phone: \_\_\_\_\_  
eMail: \_\_\_\_\_

QTY: \_\_\_\_\_  
Material/Gauge: \_\_\_\_\_  
X Size: \_\_\_\_\_  
Y Size: \_\_\_\_\_  
Length: \_\_\_\_\_

PO Number: \_\_\_\_\_  
Job/Project: \_\_\_\_\_  
Notes: \_\_\_\_\_  
\_\_\_\_\_  
\_\_\_\_\_  
\_\_\_\_\_

**877-786-2587 • StocktonProducts.com**

