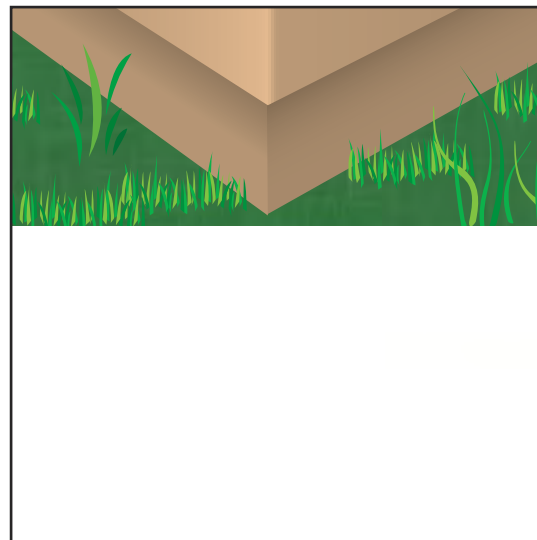


OC: One-Coat

- Available in Galvanized or Stainless Steel

Patterned after CornerAid® but with a tight fit on the corner. It is to be used over an insulated foam board system for 1/4" to 3/8" EIFS and One Coat stucco. It has standard 2 3/8" legs. Available in stainless steel to be used with absolute confidence in high humidity and salt air environments.



Per Carton

Total Feet: 400'

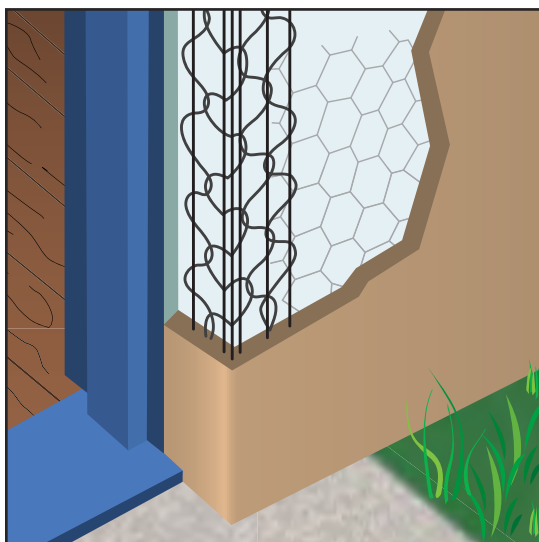
Pieces: 40

Length: 10'



Most Common Part Numbers:

100C	One-Coat: GS, 10'
10SSOC	One-Coat: SS, 10'



OCSF: One-Coat Short Flange

- Available in Galvanized or Stainless Steel

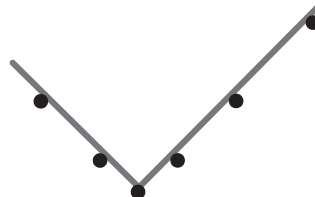
This multi-purpose piece is used for both exterior insulation "Hard Coat" and "One-Coat" systems. It is especially useful around doors, windows and as a "Return" or "Stop". Length of flange is 1 1/4".

Per Carton

Total Feet: 400'

Pieces: 40

Length: 10'



Most Common Part Numbers:

100CSF	One-Coat Short Flange: 1 1/4", GS, 10'
10SSOCSF	One-Coat Short Flange: 1 1/4", SS, 10'