

## PNLF: Plastic Nose Long Flange

- Available in Galvanized or Stainless Steel

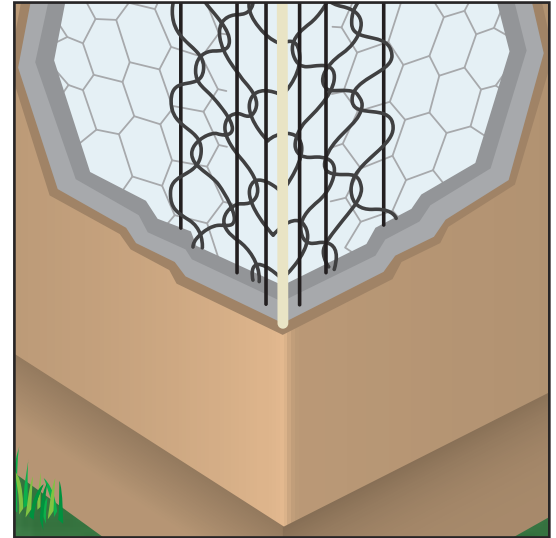
Designed for extra thick fireproofing. This product is engineered for exterior or interior reinforcing with up to 2 3/8" fireproofing material. It has wide 3 1/4" legs. Available in stainless steel to be used with absolute confidence in high humidity and salt air environments. Recommended for use with acrylic finishes. Extra nose wires provide increased structural rigidity.

### Per Carton

**Total Feet:** 250'

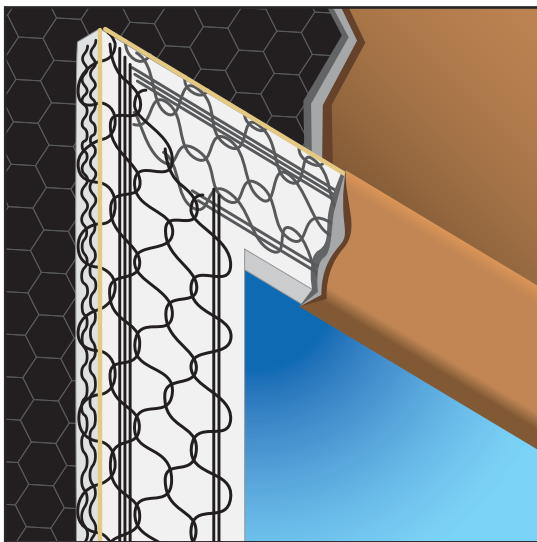
**Pieces:** 25

**Length:** 10'



### Most Common Part Numbers:

<b>10PNLF</b>	Plastic Nose Long Flange: GS, 10'
<b>10SSPNLF</b>	Plastic Nose Long Flange: SS, 10'



## PNPOA: Plastic Nose PopOutAid™

- Available in Galvanized or Stainless Steel

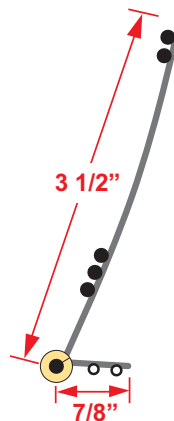
The plastic nose version of our PopOutAid™. Used to form decorative pop outs around windows and doors as well as other ornamental trim details. Unique wire pattern and shape provides excellent "Keying" of the stucco to the welded wire when forming and finishing the pop out. The plastic nose provides a depth guide that assures proper embedment of the wire in the brown coat and extra confidence in harsh climates and environments.

### Per Carton

**Total Feet:** 300'

**Pieces:** 30

**Length:** 10'



### Most Common Part Numbers:

<b>10PNPOA</b>	Plastic Nose PopOutAid™: GS, 10'
<b>10SSPNPOA</b>	Plastic Nose PopOutAid™: SS, 10'