

## PNWA: Plastic Nose WeepAid®

- Available In 7/8" and 1 1/2" Flange
- Available in Galvanized or Stainless Steel

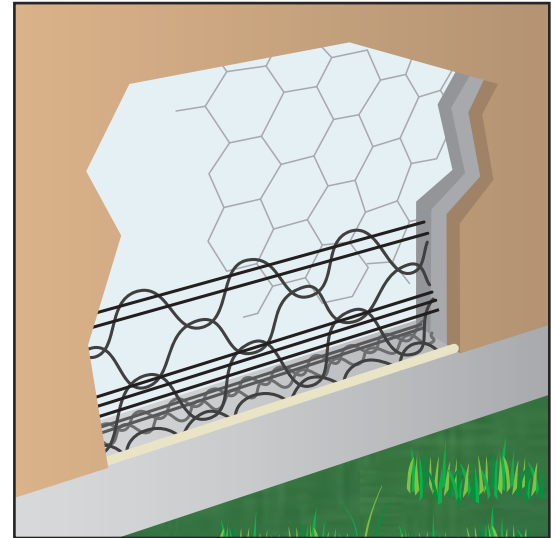
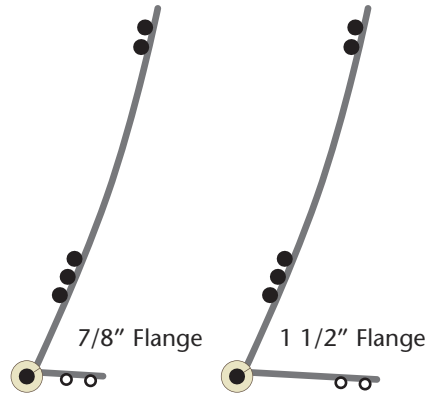
Designed to act as a foundation screed for conventional 3-coat 7/8" stucco, WeepAid® maximizes the weep area and reduces the opportunity for stucco to stain or crack. Easy to tailor and trim. Comes with a non-rust high impact PVC nose. Can be used to form pop-outs around windows and doors as well as other "Ginger-Bread" details. Recommended for use with acrylic finishes.

### Per Carton

**Total Feet:** 250'

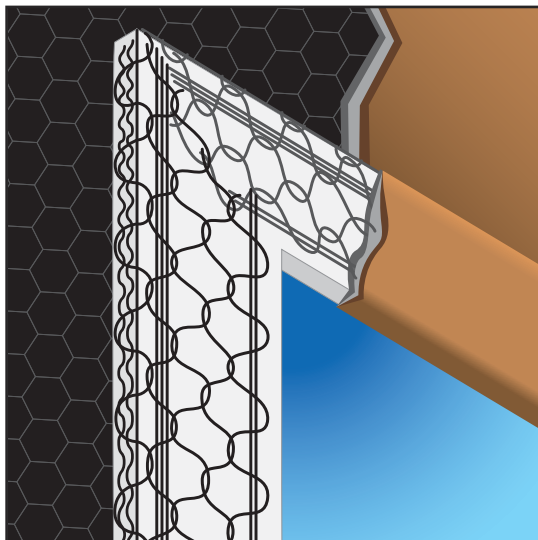
**Pieces:** 25

**Length:** 10'



### Most Common Part Numbers:

<b>10PNWA78</b>	Plastic Nose WeepAid®: 7/8", GS, 10'
<b>10PNWA112</b>	Plastic Nose WeepAid®: 1 1/2", GS, 10'
<b>10SSPNWA78</b>	Plastic Nose WeepAid®: 7/8", SS, 10'
<b>10SSPNWA112</b>	Plastic Nose WeepAid®: 1 1/2", SS, 10'



## POA: PopOutAid™

- Available in Galvanized or Stainless Steel

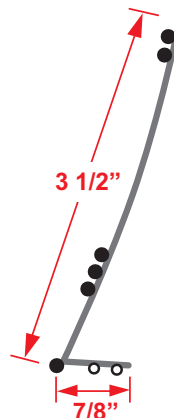
Used to form decorative pop outs around windows and doors as well as other ornamental trim details. Unique wire pattern and shape provides excellent "Keying" of the stucco to the welded wire when forming and finishing the pop out.

### Per Carton

**Total Feet:** 300'

**Pieces:** 30

**Length:** 10'



### Most Common Part Numbers:

<b>10POA</b>	PopOutAid™: GS, 10'
<b>10SSPOA</b>	PopOutAid™: SS, 10'