



SF: Short Flange

- Available in Galvanized or Stainless Steel

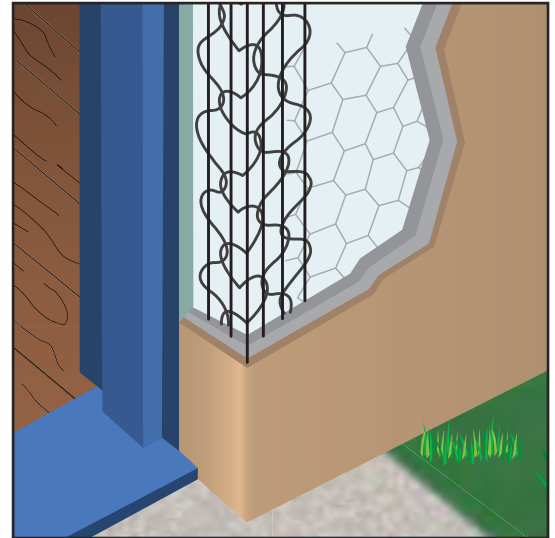
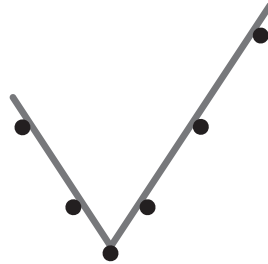
Shaped for exterior or interior corners on doors, windows and panel systems where a short flange or stop is needed. It offers one standard 2 3/8" leg and one short 1 1/2" leg. Available in stainless steel to be used with absolute confidence in high humidity and salt air environments.

Per Carton

Total Feet: 400'

Pieces: 40

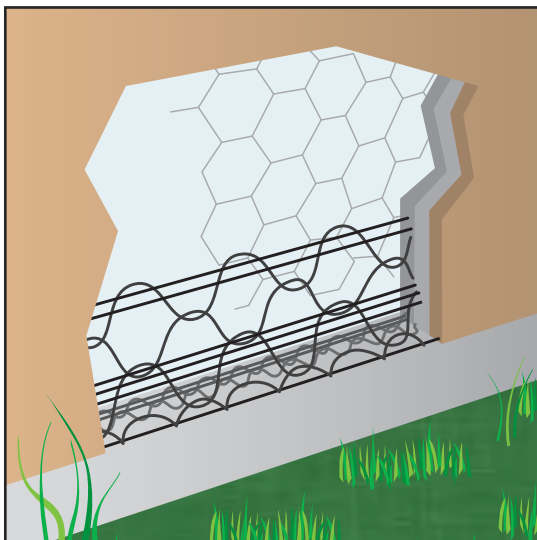
Length: 10'



Most Common Part Numbers:

10SF Short Flange: GS, 10'

10SSSF Short Flange: SS, 10'



WA: WeepAid®

- Available In 7/8" and 1 1/2" Flange
- Available in Galvanized or Stainless Steel

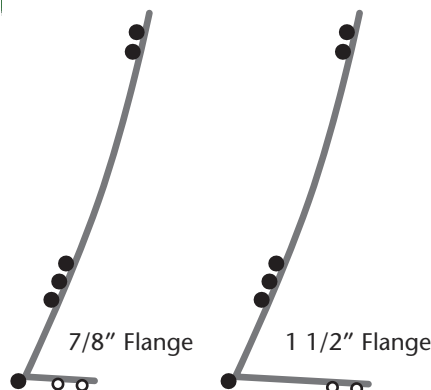
Designed to act as a foundation screed for conventional 3-coat 7/8" stucco, WeepAid® maximizes the weep area and reduces the opportunity for stucco to stain or crack. Allows any moisture that gets behind the stucco to drain. Easy to tailor and trim. Can be used to form pop-outs around windows and doors as well as other "Ginger-Bread" details.

Per Carton

Total Feet: 300'

Pieces: 30

Length: 10'



Most Common Part Numbers:

10WA78 WeepAid®: 7/8", GS, 10'

10WA112 WeepAid®: 1 1/2", GS, 10'

10SSWA78 WeepAid®: 7/8", SS, 10'

10SSWA112 WeepAid®: 1 1/2", SS, 10'