



SPECIAL SIZES AVAILABLE!

Contact Stockton Custom Fabrication at (877) 786-2587

AWF: Attic Wing Fascia (J-2)

- Special Sizes Available, Contact Customer Service For Details
 - Available With 1/8", 1/4" Vent Holes or No Vent
 - Available Curved Upon Request
 - Available in Aluminum (A), Copper (C), Galvanized Steel (GS), Bonderized (BN), Galvalume® (GVM), Stainless Steel (SS) or Zinc (Z)
- (See Our Materials Guide For Details, Page 40)

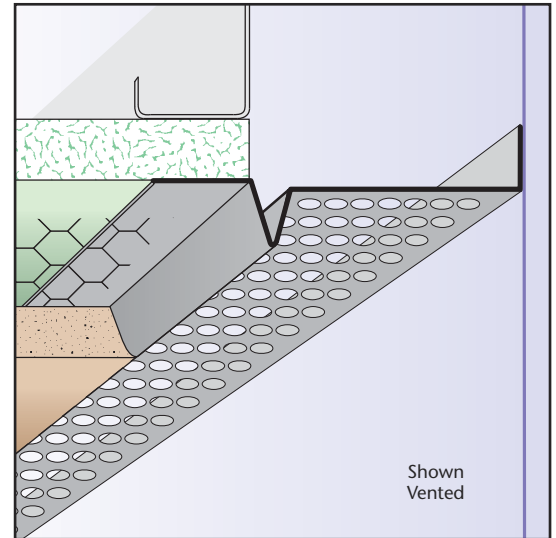
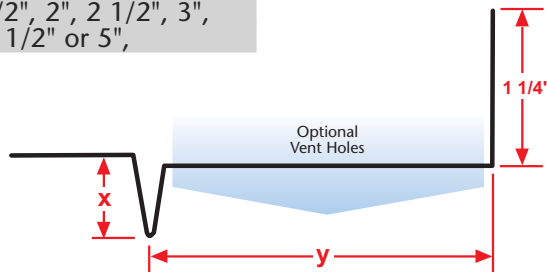
Provides a ventilated finish at the juncture of soffit and fascia providing attachment by a wing in attic. Available non-vented for use as a decorative reveal upon request.

Most Common Sizes

X Sizes: 3/8", 1/2", 5/8", 3/4", 7/8" or 1"

Y Sizes: 3/4", 1", 1 1/2", 2", 2 1/2", 3", 3 1/2", 4", 4 1/2" or 5"

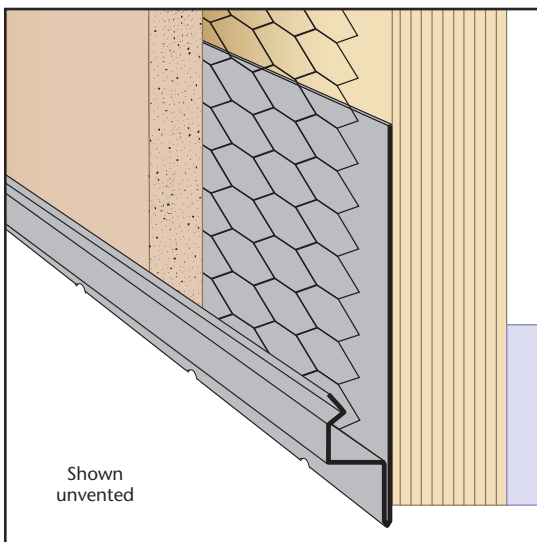
Length: 120"



Most Common Part Numbers:

AWF012V400	AWF: X=1/2, 1/8 Vent, Y=4, GS, 10'
AWF034V112J	AWF: X=3/4, 1/4 Vent, Y=1 1/2, GS, 10'
AWF034V134RT12	AWF: X=3/4, 1/4 Vent, Y=1 3/4, GS, 10', 1/2 Return

AWF034V212	AWF: X=3/4, 1/8 Vent, Y=2 1/2, GS, 10'
AWF034V412	AWF: X=3/8, 1/8 Vent, Y=4 1/2, GS, 10'
AWF038V034	AWF: X=3/8, 1/8 Vent, Y=3/4, GS, 10'
AWF078V400	AWF: X=7/8, 1/8 Vent, Y=4, GS, 10'



BSS: Blind Stop

- Special Sizes Available, Contact Customer Service For Details
 - Superior™ Moisture Protection
 - Available With 1/8" Weep Holes
 - Available Curved Upon Request
 - Available in Aluminum (A), Copper (C), Galvanized Steel (GS), Bonderized (BN), Galvalume® (GVM), Stainless Steel (SS) or Zinc (Z)
- (See Our Materials Guide For Details, Page 40)

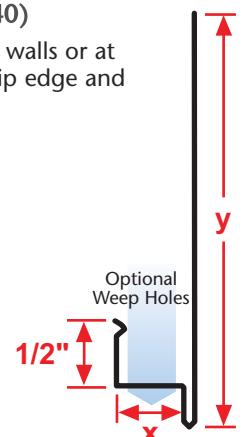
A plaster stop that terminates the stucco at the base of walls or at the fascia, or fascia/soffit conditions. Also provides a drip edge and has weep holes.

Most Common Sizes

X Sizes: 1/2", 3/4", 7/8" or 1"

Y Sizes: 2 3/4" or 3 1/2"

Length: 120"



Most Common Part Numbers:

BSS034 234	BSS: X=3/4, Y=2 3/4, GS, 10'
BSS034W234	BSS: X=3/4, 1/8 Weep Hole, Y=2 3/4, GS, 10'
BSS034W312	BSS: X=3/4, 1/8 Weep Hole, Y=3 1/2, GS, 10'
BSS034W312SS	BSS: X=3/4, 1/8 Weep Hole, Y=3 1/2, SS, 10'

BSS078 312	BSS: X=7/8, Y=3 1/2, GS, 10'
BSS078W234	BSS: X=7/8, 1/8 Weep Hole, Y=2 3/4, GS, 10'
BSS078W312	BSS: X=7/8, 1/8 Weep Hole, Y=3 1/2, GS, 10'
BSS100W312	BSS: X=1, 1/8 Weep Hole, Y=3 1/2, GS, 10'