



SPECIAL SIZES AVAILABLE!

Contact Stockton Custom Fabrication at (877) 786-2587

METAL

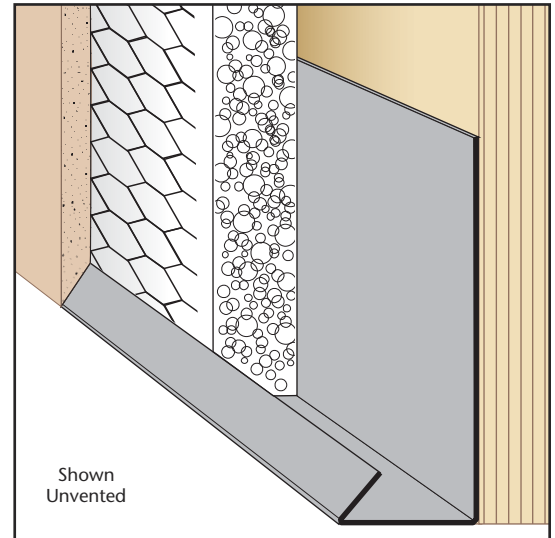
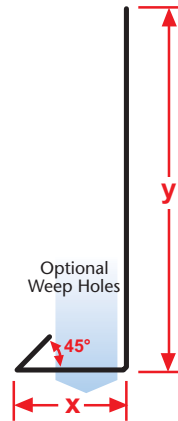
CSB: Casing Starter Bead

- Special Sizes Available, Contact Customer Service For Details
 - Superior™ Moisture Protection
 - Available With 1/8", 1/2" Weep Holes or No Holes
 - Available Curved Upon Request
 - Available in Aluminum (A), Copper (C), Galvanized Steel (GS), Bonderized (BN), Galvalume® (GVM), Stainless Steel (SS) or Zinc (Z)
- (See Our Materials Guide For Details, Page 40)

A stop used as a starting track for EIFS systems.

Most Common Sizes

- X Sizes:** 3/8", 1/2", 5/8", 3/4", 7/8", 1", 1 1/8", 1 1/4", 1 3/8", 1 1/2", 1 5/8", 1 3/4", 2" or 2 1/2"
- Y Sizes:** 1 1/2", 2" or 3 1/2"
- Length:** 120"



Most Common Part Numbers:

CSB034 112 CSB: X=3/4, Y=1 1/2, GS, 10'

CSB034 112C CSB: X=3/4, Y=1 1/2, C, 10'

CSB034W312C CSB: X=3/4, 1/8 Weep Hole, Y=3 1/2, C, 10'

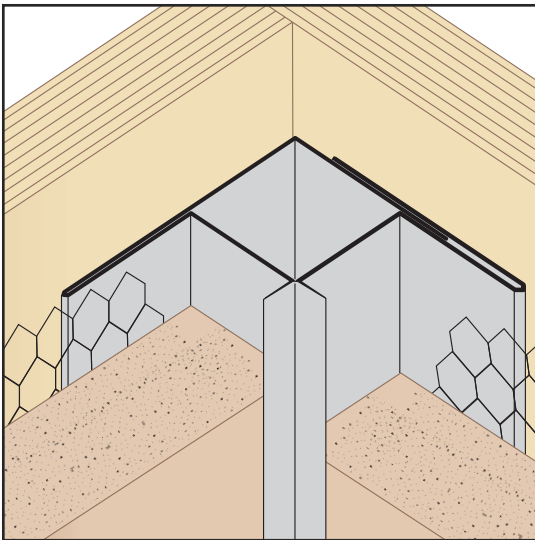
CSB078 200 CSB: X=7/8, Y=2, GS, 10'

CSB114 112 CSB: X=1 1/4, Y=1 1/2, GS, 10'

CSB114W112 CSB: X=1 1/4, 1/8 Weep, Y=1 1/2, GS, 10'

CSB134 312 CSB: X=1 3/4, Y=3 1/2, GS, 10'

CSB200W312 CSB: X=2, 1/8 Weep Holes, Y=3 1/2, GS, 10'



CSJ: Corner Slip Joint - 2 Piece

- Special Sizes Available, Contact Customer Service For Details
 - Available in Aluminum (A), Copper (C), Galvanized Steel (GS), Bonderized (BN), Galvalume® (GVM), Stainless Steel (SS) or Zinc (Z)
- (See Our Materials Guide For Details, Page 40)

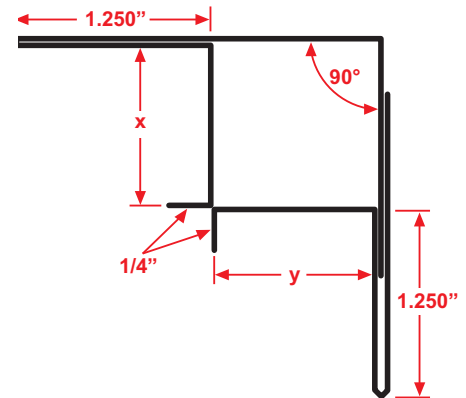
Designed to facilitate movement at an inside corner condition.

Most Common Sizes

X Sizes: 1/2", 5/8", 3/4", 7/8" or 1"

Y Sizes: 3/8", 1/2", 5/8", 3/4", 7/8" or 1"

Length: 120"



Most Common Part Numbers:

CSJ034 034 CSJ: X=3/4, Y=3/4, GS, 10'

CSJ078 034 CSJ: X=7/8, Y=3/4, GS, 10'

CSJ078 034Z CSJ: X=7/8, Y=3/4, Z, 10'

CSJ078 078A CSJ: X=7/8, Y=7/8, A, 10'

CSJ078 078SS CSJ: X=7/8, Y=7/8, SS, 10'

CSJ078 078Z CSJ: X=7/8, Y=7/8, Z, 10'

CSJ078 100 CSJ: X=7/8, Y=1, GS, 10'

CSJ100 100SS4 CSJ: X=1, Y=1, SS, 4'