

FAS-RBR-STRAP: Strap (Rated Base Reveal)

- Available in Galvanized Steel (GS) 20ga. Only

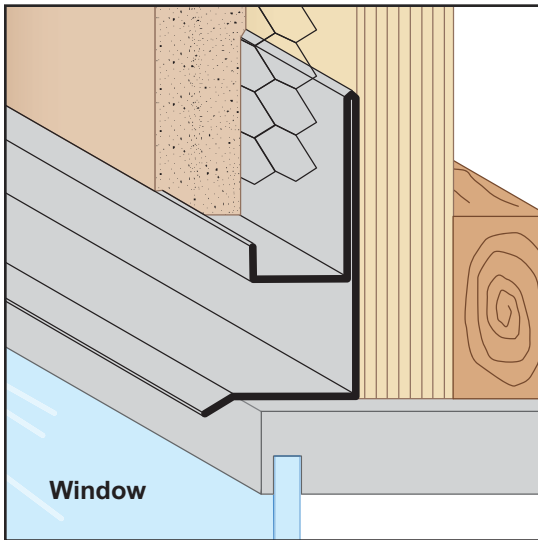
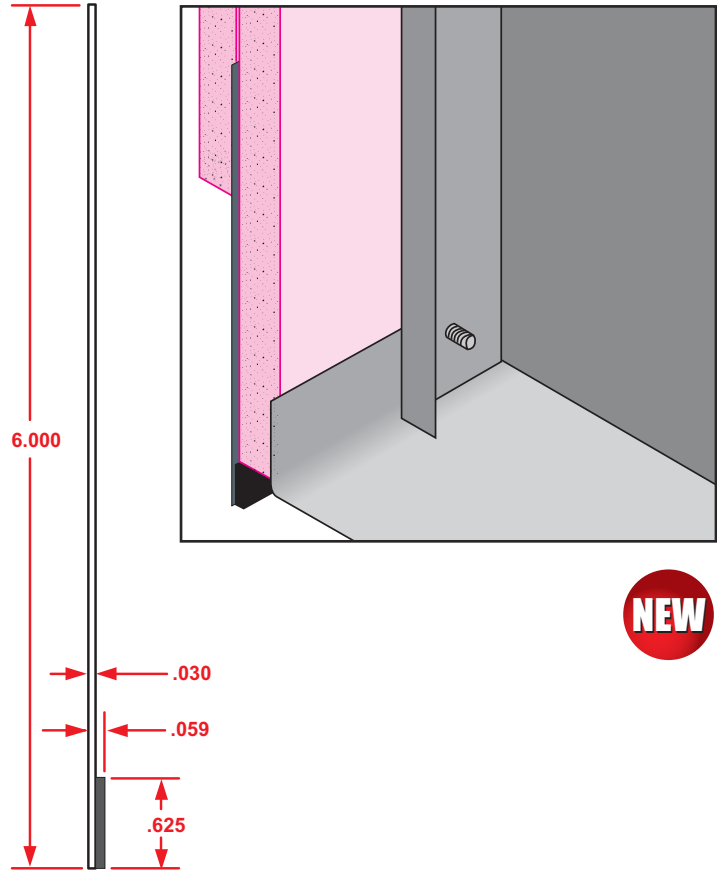
FAS-RBR-STRAP (Rated Base Reveal) is a 6" composite steel/intumescent profile that provides a fire and smoke rating according to UL-2079 for a recessed base board and listed under UL BW-S-0036. The FAS-RBR Strap is a fire rated steel/intumescent strap drywall accessory that provides fire rating for recessed base board assemblies. FAS-RBR-STRAP takes the place of drywall and maintains the UL fire rating. Provides both one and two hour fire ratings.

FAS-RBR-STRAP is fabricated from hot-dipped galvanized steel complying with ASTM A653, and ASTM A1003 Grade 33 Type H for 33 ksi yield strength steel for 20 gauge (30 mil) with a minimum G40 coating complying with ASTM A924. U.S. Patent No. 9,752,318 B2

Available Size

Width: 6"

Length: 120"



FDM: F-Drip Mold

- Special Sizes Available, Contact Customer Service For Details
 - Available With 1/8" Weep Holes or No Holes
 - Available in Aluminum (A), Copper (C), Galvanized Steel (GS), Bonderized (BN), Galvalume® (GVM), Stainless Steel (SS) or Zinc (Z)
- (See Our Materials Guide For Details, Page 40)

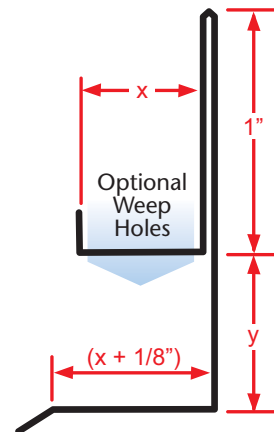
Provides a plaster stop/drip molding with an aesthetic reveal for window heads, top of doors frames and plate conditions where a drip function in desired.

Most Common Sizes

X Sizes: 1/2", 3/4", 7/8", 1" or 1 3/8"

Y Sizes: 1/2", 3/4" or 1"

Length: 120"



Most Common Part Numbers:

FDM078 012 100	FDM: X=7/8, Y=1/2, GS, 10'
FDM078W012	FDM: X=7/8, 1/8 Weep, Y=1/2, GS, 10'
FDM078W100	FDM: X=7/8, 1/8 Weep Hole, Y=1, AL, 10'
FDM078W100A	FDM: X=7/8, 1/8 Weep Hole, Y=1, A, 10'

FDM118W034A	FDM: X=1 1/8, 1/8 Weep, Y=3/4, A, 10'
FDM1516W014	FDM: X=1 5/16, 1/8 Weep, Y=1/4, GS, 10'
FDM50 100EC	FDM: X=1/2, Y=1, Clear Anodize, 10'