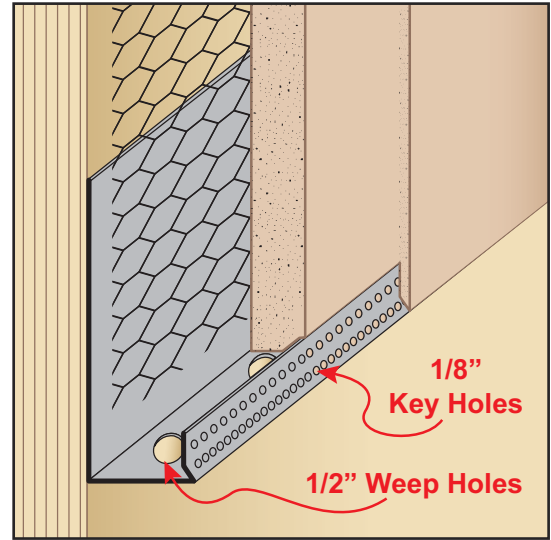


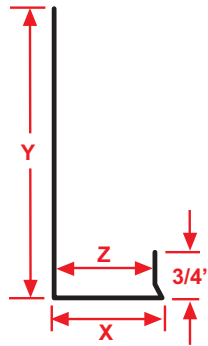
## J-B88: Long Flange J Bead

- Special Sizes Available, Contact Customer Service For Details
- Patent Pending
- Includes 1/2" Weep Holes
- Available in Galvanized Steel (GS), Galvalume® (GVM) or Aluminum (A)

Similar to the new SFC88 Short Flange "Finish Rite™" plaster trim, the J-B88 Long Flange J bead provides all the same features of controlling the brown coat thickness, but has a 3 1/2" nail flange and 1/2" diameter weep holes for those conditions where a weep function is required. No more excessive plaster build up! Control your finish, control your cost! Special sizes available. Please contact us for more information.

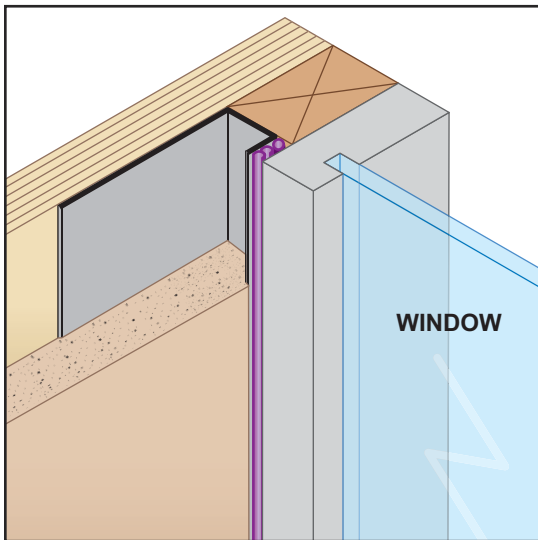


- Most Common Sizes**
- W Sizes:** 1/8" or 3/16"
  - X Sizes:** 7/8", 15/16" or 1"
  - Y Sizes:** 3 1/2"
  - Z Sizes:** 3/4"
  - Length:** 120"



### Most Common Part Numbers:

<b>J88 018K078W312 034L</b>	J88: W=1/8, 1/8 Key Holes, X=7/8, 1/2 Weep Holes, Y=3 1/2, Z= 3/4, GS, 10'
<b>J88 018K1516W312 034L</b>	J88: W=1/8, 1/8 Key Holes, X=15/16, 1/2 Weep Holes, Y=3 1/2, Z= 3/4, GS, 10'
<b>J88 018K1W312 034L</b>	J88: W=1/8, 1/8 Key Holes, X=1, 1/2 Weep Holes, Y=3 1/2, Z= 3/4, GS, 10'
<b>J88 316K078W312 034L</b>	J88: W=3/16, 1/8 Key Holes, X=7/8, 1/2 Weep Holes, Y=3 1/2, Z= 3/4, GS, 10'

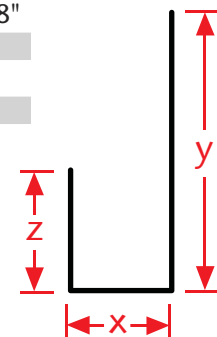


## JCB: J Caulking Bead

- Special Sizes Available, Contact Customer Service For Details
  - Superior™ Moisture Protection
  - Available Curved Upon Request
  - Available in Aluminum (A), Copper (C), Galvanized Steel (GS), Bonderized (BN), Galvalume® (GVM), Stainless Steel (SS) or Zinc (Z)
- (See Our Materials Guide For Details, Page 40)

Standard plaster stop/casing bead for terminating stucco with an extended return key for caulking.

- Most Common Sizes**
- X Sizes:** 3/8", 1/2", 7/8", 1 1/8", 1 1/4" or 1 3/8"
  - Y Sizes:** 3 1/2" or 5"
  - Z Sizes:** 1/2", 5/8", 3/4" or 1"
  - Length:** 120"



### Most Common Part Numbers:

<b>JCB078 214 100</b>	JCB: X=7/8, Y=2 1/4, Z=1, GS, 10'	<b>JCB118 200 034</b>	JCB: X=1 1/8, Y=2, Z=3/4, GS, 10'
<b>JCB078 300 034Z</b>	JCB: X=7/8, Y=3, Z=3/4, Z, 10'	<b>JCB118 400 038</b>	JCB: X=1 1/8, Y=2, Z= 3/8, GS, 10'
<b>JCB078 300 100</b>	JCB: X=7/8, Y=3, Z=1, GS, 10'	<b>JCB138 214 100</b>	JCB: X=1 3/8, Y=2 1/4, Z=1, GS, 10'
<b>JCB078 312 012</b>	JCB: X=7/8, Y=3 1/2, Z=1/2, GS, 10'		