



SPECIAL SIZES AVAILABLE!

Contact Stockton Custom Fabrication at (877) 786-2587

OEC: Offset Expansion Channel Screed - 2 Piece

- Special Sizes Available, Contact Customer Service For Details
 - Available With 1/8", 1/4" Vent Holes or No Holes
 - Available in Aluminum (A), Copper (C), Galvanized Steel (GS), Bonderized (BN), Galvalume® (GVM), Stainless Steel (SS) or Zinc (Z)
- (See Our Materials Guide For Details, Page 40)

Two piece adjustable version of our Offset Plaster Channel Screed that permits movement in a double stud condition or at a floor line.

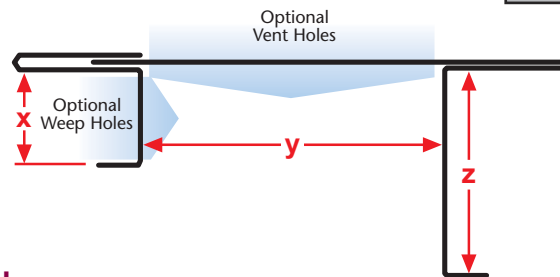
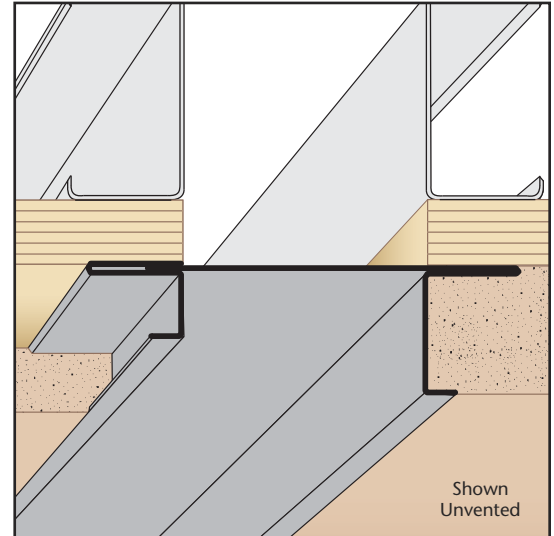
Most Common Sizes

X Sizes: 3/8", 1/2", 3/4", 7/8", 1" or 1 3/8"

Y Sizes: 3/4", 1 1/2" or 2"

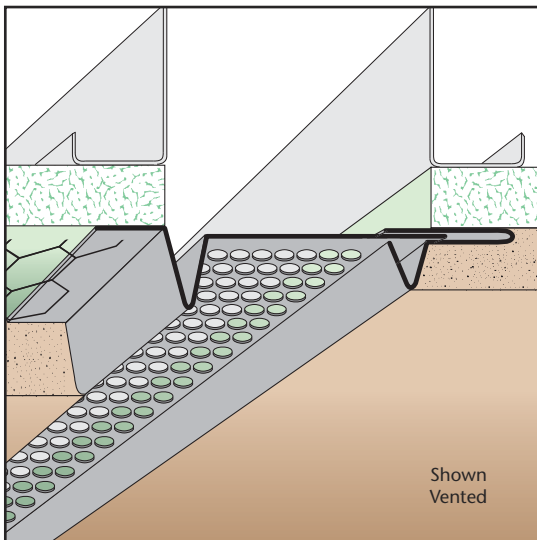
Z Sizes: 1/2", 3/4", 7/8", 1", 1 1/4", 1 3/8", 1 3/4" or 2"

Length: 120"



Most Common Part Numbers:

OEC038 075 050 OEC: X=3/8, Y=3/4, Z=1/2, GS, 10'



OES: Offset Expansion Screed - 2 Piece

- Special Sizes Available, Contact Customer Service For Details
 - Available With 1/8", 1/4" Vent Holes or No Holes
 - Available in Aluminum (A), Copper (C), Galvanized Steel (GS), Bonderized (BN), Galvalume® (GVM), Stainless Steel (SS) or Zinc (Z)
- (See Our Materials Guide For Details, Page 40)

Adjustable version of our Offset Reveal Screed that permits movement in a double stud condition and at floor lines. Available vented for air flow.

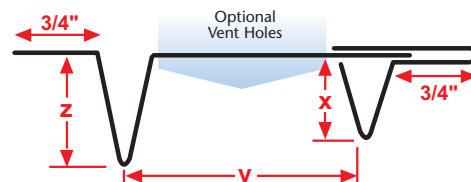
Most Common Sizes

X Sizes: 3/8", 1/2", 3/4", 7/8", 1" or 1 3/8"

Y Sizes: 3/4", 1", 1 1/2", 2", 2 1/2", 3", 3 1/2", 4", 4 1/2", 5", 5 1/2" or 6"

Z Sizes: 1/2", 3/4", 7/8", 1", 1 1/4", 1 1/2", 1 3/4" or 2"

Length: 120"



Most Common Part Numbers:

OES038 075 050 OES: X=3/8, Y=3/4, Z=1/2, GS, 10'