



**SPECIAL SIZES AVAILABLE!**

Contact Stockton  
Custom Fabrication  
at (877) 786-2587

**METAL**

## PSV: Plywood Style Vent

- Special Sizes Available, Contact Customer Service For Details
- Available With 1/8", 1/4" Vent Holes or No Holes
- Available Pre-Painted Brown (B), White (W) or Unpainted (G)
- Galvanized Steel (GS) Only

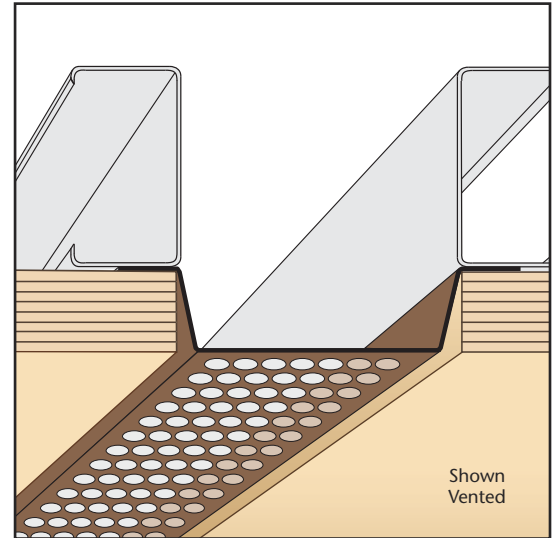
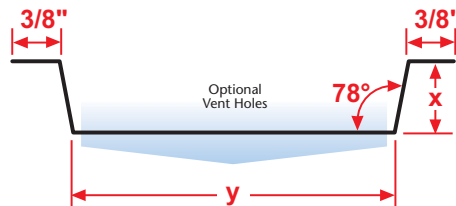
Specialty soffit vent for use with plywood soffit conditions.

### Most Common Sizes

**X Sizes:** 1/2", 3/8"

**Y Sizes:** 3/4", 2 1/4" or 4"

**Length:** 120"



### Most Common Part Numbers:

**PSV012 034** PSV: X=1/2, 1/8 Vent, Y=3/4, GS, 10'

**PSV012V214B** PSV: X=1/2, 1/8 Vent, Y=2 1/4, GS, 10', Brn

**PSV012V214BJ** PSV: X=1/2, 1/4 Vent, Y=2 1/4, GS, 10', Brn

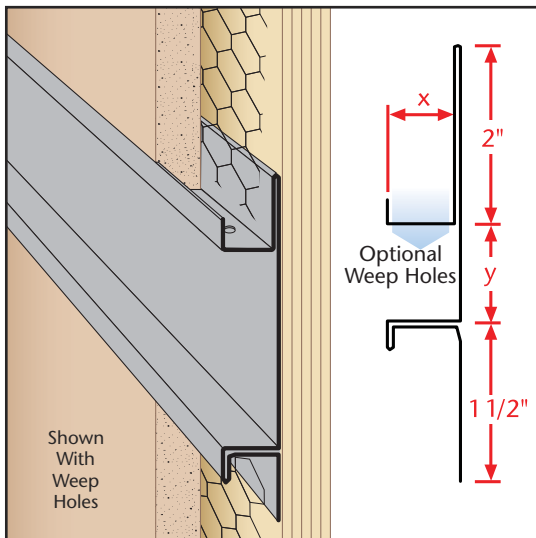
**PSV012V214GJ** PSV: X=1/2, 1/4 Vent, Y=2 1/4, GS, 10', UnPainted

**PSV012V214W** PSV: X=1/2, 1/8 Vent, Y=2 1/4, GS, 10', Wht

**PSV012V214WJ** PSV: X=1/2, 1/4 Vent, Y=2 1/4, GS, 10', Wht

**PSV012V400** PSV: X=1/2, 1/8 Vent, Y=4, GS, 10'

**PSV038V400JB** PSV: X=3/8, 1/4 Vent, Y=4, GS, 10', Brn



## PWC: Plaster Water-Resistant Channel

- Special Sizes Available, Contact Customer Service For Details
- SolidGround® Design For Moisture Protection
- Available With 1/8" Weep Holes or No Holes
- Available in Aluminum (A), Copper (C), Galvanized Steel (GS), Bonderized (BN), Galvalume® (GVM), Stainless Steel (SS) or Zinc (Z)

(See Our Materials Guide For Details, Page 40)

One-piece SolidGround® design feature mitigates the concern of moisture penetration in a horizontal condition.

**Note:** For Y Sizes over 2", use extruded aluminum or OWC.

### Most Common Sizes

**X Sizes:** 5/8", 3/4", 7/8", 1" or 1 3/8"

**Y Sizes:** 3/4", 1", 1 1/2" or 2"

**Length:** 120"



### Most Common Part Numbers:

**PWC034 112** PWC: X=3/4, Y=1 1/2, GS, 10'

**PWC034 034** PWC: X=3/4, Y=3/4, GS, 10'

**PWC034 200** PWC: X=3/4, Y=2, GS, 10'

**PWC034W034** PWC: X=3/4, 1/8 Weep, Y=3/4, GS, 10'

**PWC034W200** PWC: X=3/4, 1/8 Weep, Y=2, GS, 10'

**PWC038W200** PWC: X=3/8, 1/8 Weep, Y=2, GS, 10'

**PWC058 034A** PWC: X=5/8, Y=3/4, A, 10'

**PWC078 100** PWC: X=7/8, Y=1, GS, 10'