



SPECIAL SIZES AVAILABLE!

Contact Stockton Custom Fabrication at (877) 786-2587

METAL

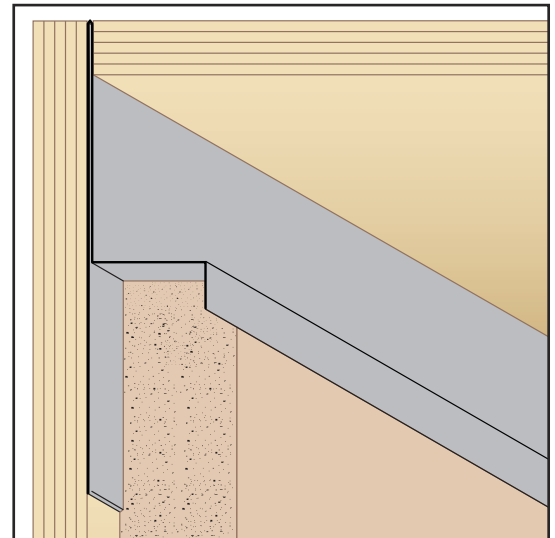
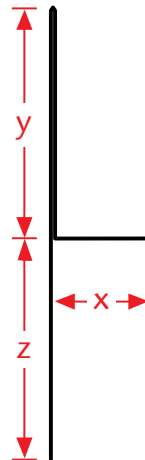
TWM: T Water-Resistant Molding

- Special Sizes Available, Contact Customer Service For Details
 - Superior™ Moisture Protection
 - SolidGround® Design For Moisture Protection
 - Available in Aluminum (A), Copper (C), Galvanized Steel (GS), Bonderized (BN), Galvalume® (GVM), Stainless Steel (SS) or Zinc (Z)
- (See Our Materials Guide For Details, Page 40)

One-piece SolidGround® design feature mitigates the concern of moisture penetration in a horizontal condition. Provides a plaster stop for top of wall/parapet conditions. SolidGround® design prevents moisture penetration at the top of the wall.

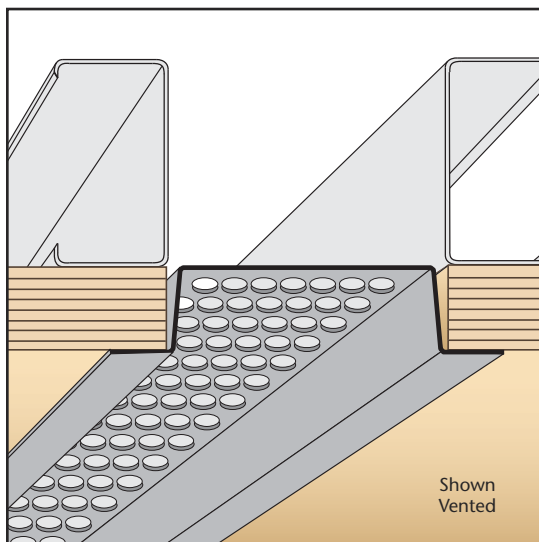
Most Common Sizes

- X Sizes:** 1/2", 3/4", 7/8", 1", 1 1/4", 1 3/8" or 1 1/2"
- Y Sizes:** 3/4", 1", 1 1/2", 2", 2 1/2" or 3"
- Z Sizes:** 3/4", 1", 1 1/2", 2", 2 1/2" or 3"
- Length:** 120"



Most Common Part Numbers:

TWM034 238 300	TWM: X=3/4, Y=2 3/8, Z=3, GS, 10'	TWM078 200 112	TWM: X=7/8, Y=2, Z=1 1/2, GS, 10'
TWM034 300 200	TWM: X=3/4, Y=3, Z=2, GS, 10'	TWM100 112 112	TWM: X=1, Y=1 1/2, Z=1 1/2, GS, 10'
TWM078 112 112	TWM: X=7/8, Y=1 1/2, Z=1 1/2, GS, 10'	TWM100 200 212	TWM: X=1, Y=2, Z=2 1/2, GS, 10'
TWM078 112 112SS	TWM: X=7/8, Y=1 1/2, Z=1 1/2, SS, 10'	TWM100 200 300	TWM: X=1, Y=2, Z=3, GS, 10'



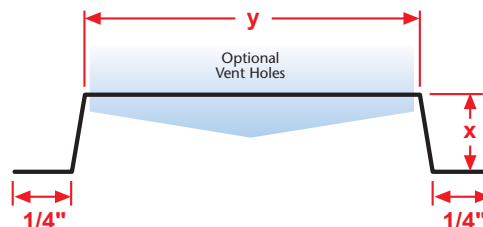
VHC: Vented Hat Channel

- Special Sizes Available, Contact Customer Service For Details
 - Available With 1/8", 1/4" Vent Holes or No Vent
 - Available Curved Upon Request
 - Available in Aluminum (A), Copper (C), Galvanized Steel (GS), Bonderized (BN), Galvalume® (GVM), Stainless Steel (SS) or Zinc (Z)
- (See Our Materials Guide For Details, Page 40)

This screed offers ventilation while providing a finished, "flush" reveal look. A decorative "flush" reveal for use in a soffit condition.

Most Common Sizes

- X Sizes:** 3/8", 1/2", 5/8", 3/4", 7/8", 1" or 1 3/8"
- Y Sizes:** 3/4", 1", 1 1/2", 2", 2 1/2", 3", 3 1/2", 4" or 4 1/2"
- Length:** 120"



Most Common Part Numbers:

VHC012V200	VHC: X=1/2, 1/8 Vent, Y=2, GS, 10'	VHC038V200JA	VHC: X=3/8, 1/4 Vent, Y=2, A, 10'
VHC012V300J	VHC: X=1/2, 1/4 Vent, Y=3, GS, 10'	VHC058V200	VHC: X=5/8, 1/8 Vent, Y=2, GS, 10'
VHC034V200	VHC: X=3/4, 1/8 Vent, Y=2, GS, 10'	VHC078V200J	VHC: X=7/8, 1/4 Vent, Y=2, GS, 10'
VHC034V300J	VHC: X=3/4, 1/4 Vent, Y=3, GS, 10'	VHC516V200L	VHC: X=5/16, 1/2 Vent, Y=2, GS, 10'