



**SPECIAL SIZES AVAILABLE!**

Contact Stockton  
Custom Fabrication  
at (877) 786-2587

## XLF: XL Foundation Screenshot

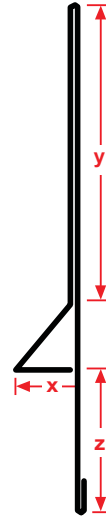
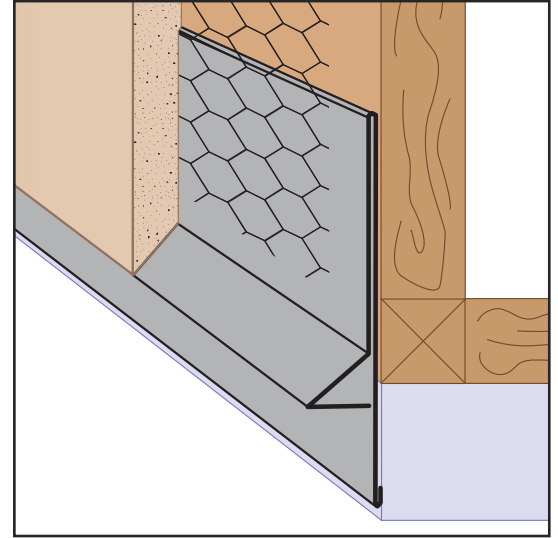
- Special Sizes Available, Contact Customer Service For Details
  - Superior™ Moisture Protection
  - Available Curved Upon Request
  - Available in Aluminum (A), Copper (C), Galvanized Steel (GS), Bonderized (BN), Galvalume® (GVM), Stainless Steel (SS) or Zinc (Z)
- (See Our Materials Guide For Details, Page 40)

Stucco installation guidelines require stucco to be held up off of hardscape. Provides an extended back leg to protect waterproof membranes.

**Note:** Weep holes are available in some configurations. Please call customer service for details.

### Most Common Sizes

**X Sizes:** 1/2", 5/8", 3/4", 7/8", 1" or 1 3/8"  
**Y Sizes:** 3 1/2", 4", 4 1/2" or 5"  
**Z Sizes:** 2 1/2", 3", 3 1/2" or 4"  
**Length:** 120"



### Most Common Part Numbers:

**XLF034 312 400** XLF: X=3/4, Y=3 1/2, Z=4, GS, 10'

**XLF034 400 312** XLF: X=3/4, Y=4, Z=3 1/2, GS, 10'

**XLF078 312 212** XLF: X=7/8, Y=3 1/2, Z=2 1/2, GS, 10'

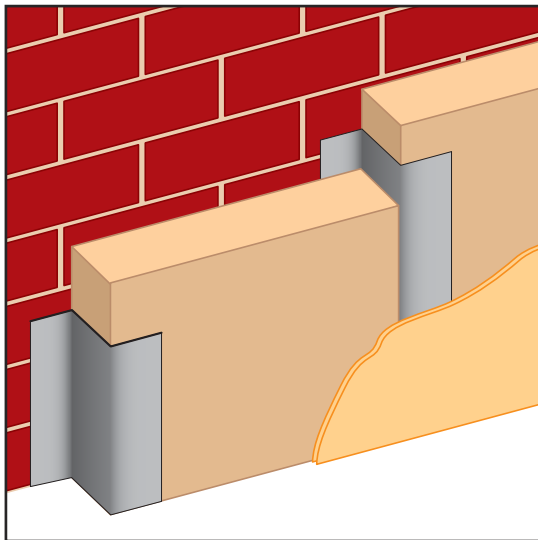
**XLF078 312 400** XLF: X=7/8, Y=3 1/2, Z=4, GS, 10'

**XLF078 318 212** XLF: X=7/8, Y=3 1/8, Z=2 1/2, GS, 10'

**XLF078W312 200L** XLF: X=7/8, 1/2 Wp, Y=3 1/2, Z=2, GS, 10'

**XLF118 312 112** XLF: X=1 1/8, Y=3 1/2, Z=1 1/2, GS, 10'

**XLF118W212 300L** XLF: X=1 1/8, 1/2 Wp, Y=2 1/2, Z=3, GS, 10'



## Z-B: Z-Bar

- Special Sizes Available, Contact Customer Service For Details
  - Available in Aluminum (A), Copper (C), Galvanized Steel (GS), Bonderized (BN), Galvalume® (GVM), Stainless Steel (SS) or Zinc (Z)
- (See Our Materials Guide For Details, Page 40)

Z-Bar provides a method of attaching rigid insulation and other material.

### Most Common Sizes

**X Sizes:** User Defined  
**Y Sizes:** User Defined  
**Z Sizes:** User Defined  
**Length:** User Defined

