



**SPECIAL SIZES AVAILABLE!**

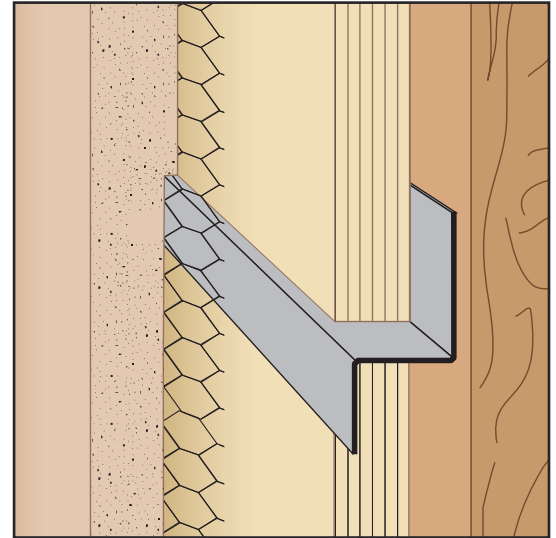
Contact Stockton Custom Fabrication at (877) 786-2587

**Z-T: Z-Trim**

- Special Sizes Available, Contact Customer Service For Details
- Available Curved Upon Request
- Available in Aluminum (A), Copper (C), Galvanized Steel (GS), Bonderized (BN), Galvalume® (GVM), Stainless Steel (SS) or Zinc (Z)

(See Our Materials Guide For Details, Page 40)

Used to properly seal and join two pieces of plywood and other conditions where a "Z" shape is required



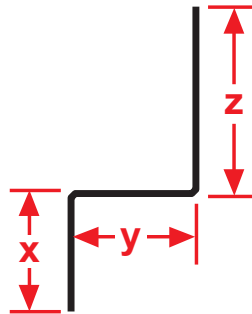
**Most Common Sizes**

**X Sizes:** 1/4", 1/2", 1", 1 1/2" or 2"

**Y Sizes:** 1/2", 5/8", 3/4", 1" or 2"

**Z Sizes:** 3/4", 1", 1 1/2" or 2"

**Length:** 120"



**Most Common Part Numbers:**

**Z T100W078 100AC**

Z-Trim: X=1, 1/8 Weep, Y=7/8, Z=1, Clear Anodize, A, 10'

**Z T112 100 112GA20**

Z-Trim: X=1 1/2, Y=1, Z=1 1/2, GS 20ga, 10'

**Z T300 012 200**

Z-Trim: X=3, Y=1/2, Z=2, GS, 10'

**Z T200200300GA16144IN**

Z-Trim: X=2, Y=2, Z=3, A, 16ga GS, 12'

*Did you know?*

- Most welded wire corners can be special ordered in stainless steel.
- Stockton Products can design and manufacture custom vents, reveals and other trims to your specifications in copper, galvanized steel, bonderized, galvalume®, zinc, stainless steel, hot roll steel or aluminum.
- Stockton Products has one of the broadest product offerings for moisture management. See the Superior Moisture Management® Products selection on page 43.
- Need additional catalogs? You can request a catalog(s) on our website or feel free to call 1-87-Stockton today.

