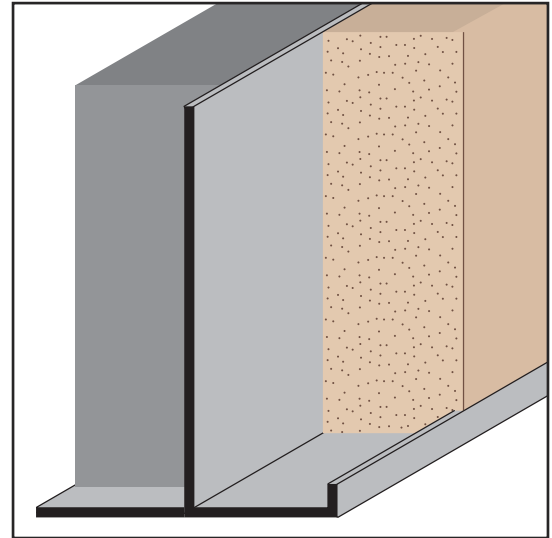


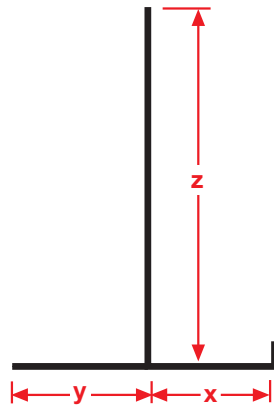
FCM: Fascia Corner Molding

- Available Curved Upon Request
- Available in Aluminum Alloy (6063 T-5)

A plaster stop for fascia/soffit corner conditions that provides a reveal on the soffit portion.

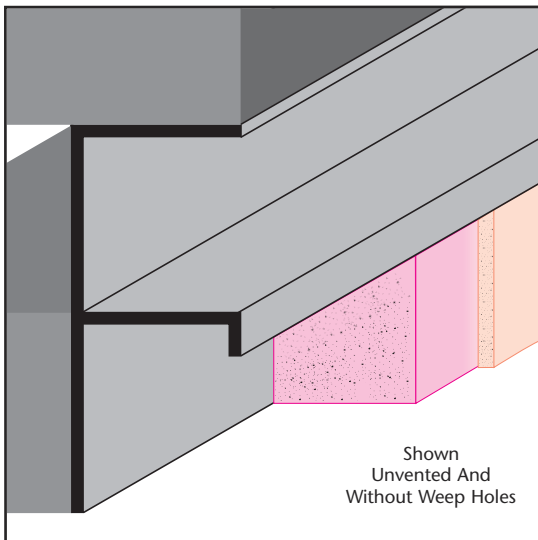


Most Common Sizes	
X Sizes:	3/4"
Y Sizes:	7/8"
Z Sizes:	2 3/16"
Length:	10'



Most Common Part Numbers:

FCM75EC	FCM: X=3/4, Y=7/8, Z=2 3/16, Clear Anod, AL, 10'	FCM75EK	FCM: X=3/4, Y=7/8, Z=2 3/16, Fluorophore Paint, AL, 10'
FCM75EDB	FCM: X=3/4, Y=7/8, Z=2 3/16, Clear Anod, AL, 10'		
FCM75E	FCM: X=3/4, Y=7/8, Z=2 3/16, Mill Finish, AL, 10'		
FCM75ECH	FCM: X=3/4, Y=7/8, Z=2 3/16, Chem-Film, AL, 10'		



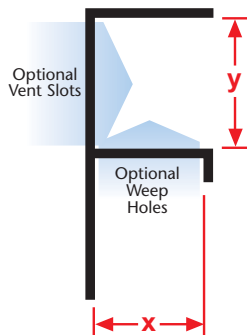
FDM: F Drywall Molding

- Available With 1/8" x 1" Vent Slots or No Vents
- Available With 1/8" Weep Holes or No Weep Holes
- Available Curved Upon Request
- Available in Aluminum Alloy (6063 T-5)

A drywall stop/control screed for drywall, used at the top or base of columns, the top of walls at the ceiling, or at the base to create a reveal. Also used at the top of windows to permit the continuation of a horizontal reveal at the window line.

Note: *Not available with a 1 1/2" Y size.

Note: **Available on 1/2" reveal.



Most Common Sizes	
X Sizes:	1/2" or *5/8"
Y Sizes:	**1/2", 3/4", 1", 1 1/2", 2", 3" or 4"
Length:	10'



Most Common Part Numbers:

FDM50 100EC	FDM: X=1/2, Y=1, Clear Anodize, AL, 10'	FDM625 100EC	FDM: X=5/8, Y=1, Clear Anodize, AL, 10'
FDM50 50EC	FDM: X=1/2, Y=1/2, Clear Anodize, AL, 10'	FDM625 200EC	FDM: X=5/8, Y=2, Clear Anodize, AL, 10'
FDM50 75EC	FDM: X=1/2, Y=3/4, Clear Anodize, AL, 10'	FDM625 50EC	FDM: X=5/8, Y=1/2, Clear Anodize, AL, 10'
FDM50V150EC	FDM: X=1/2, Vent, Y=1 1/2, Clear Anod, AL, 10'	FDM625 75EC	FDM: X=5/8, Y=3/4, Clear Anodize, AL, 10'