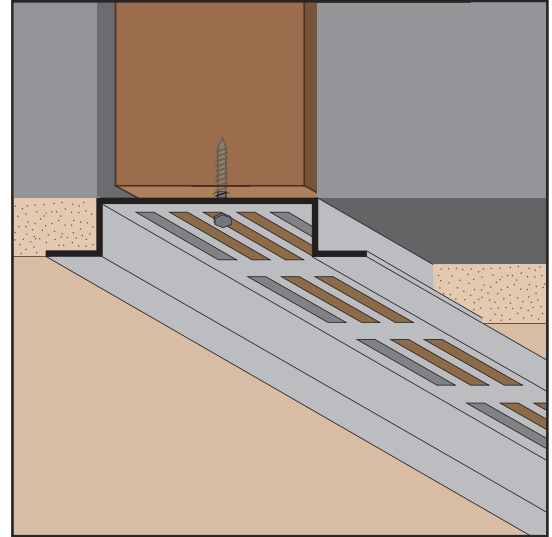


RBSV: Removable Balcony Soffit Vent

- For New or Retrofit Construction
- Available in Aluminum Alloy (6063 T-5)

A removable soffit vent that permits access to the balcony soffit space for inspection at the balcony/wall transition and allows for free air movement and ventilation. Complies with the City of Berkley R1 and R2 Zoning Districts for Exterior Elevated Elements. The soffit vent is easily installed and removed. 1/2" wide return legs are provided that will cover the rough opening.



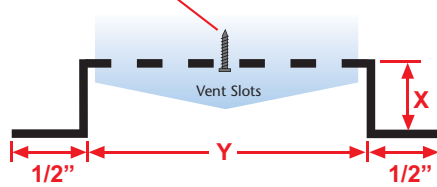
Most Common Sizes

X Sizes: 3/4"

Y Sizes: 4"

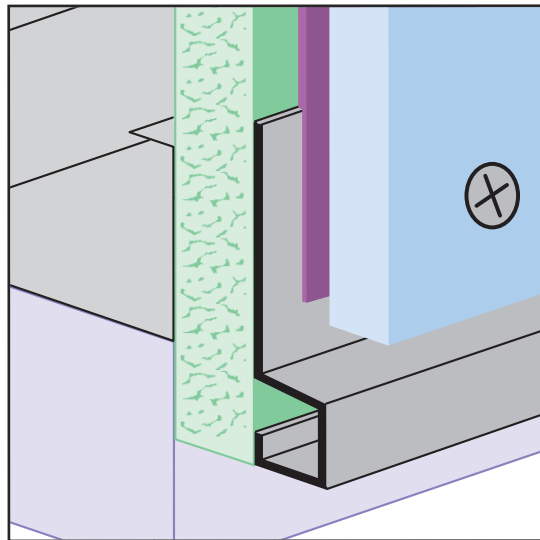
Length: 10'

INSTALLATION
Screw through vent slot
To joists for fastening.
Use a 3/4" #10 hex head screw.



Most Common Part Numbers:

RBSV75V200EC RBSV: X=3/4, Y=4, Clear Anodize, AL, 10'



SB-FCP: Starter Base for Fiber Cement Panel

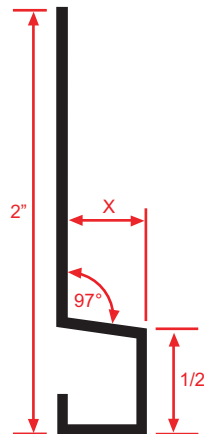
- Available in Aluminum Alloy (6063 T-5)

A functional starter trim piece for the fiber cement panel that also provides a weep point for moisture.

Most Common Sizes

X Sizes: 3/8"

Length: 10'



Most Common Part Numbers:

SB FCP EC SB-FCP: X=3/8, Clear Anodize, AL, 10'

SB FCP ECH SB-FCP: X=3/8, Chem-Film, AL, 10'

SB FCP EP SB-FCP: X=3/8, Powder Coated, AL, 10'