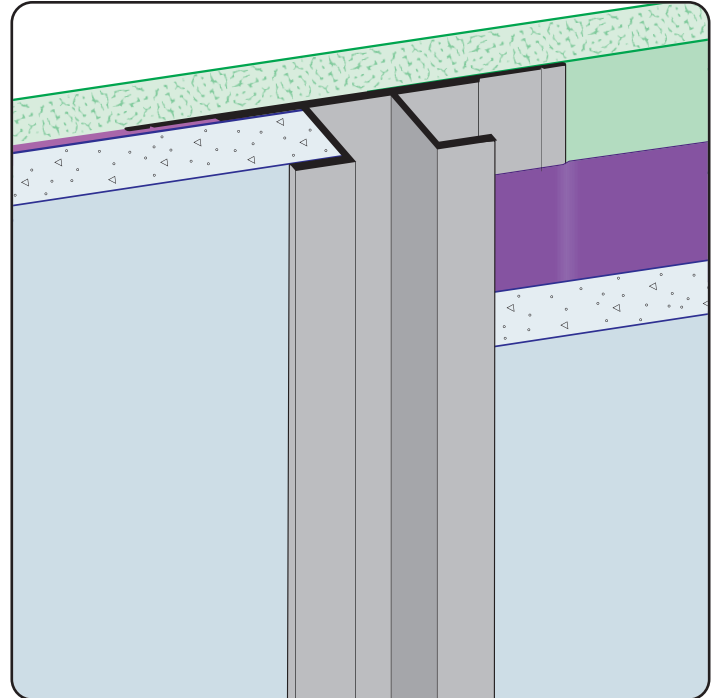


CR-FCP: Channel Reveal for Fiber Cement Panel

- Not Available Vented
- Available in Aluminum Alloy (6063 T-5)

A decorative reveal used to create an aesthetically pleasing vertical accent between panels.

Note: Do not use in a horizontal condition. Attach panel per manufacturer's recommended installation instructions.



Most Common Sizes

Length: 10'

Materials And Finishes:

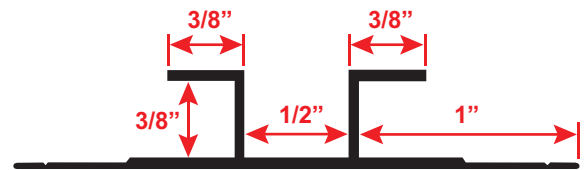
Details: stpro.us/EXT
Aluminum Alloy (6063 T-5)

ASTM Codes:

Details: stpro.us/ASTM
AA-M32-C10A21, AAMA 605.2, C841, C1047, C1063, B136-84, B244-97, D4214-98, ND1730-67-TYPE B

Most Common Part Numbers:

- CR FCP375 50EC** CR-FCP: X=3/8, Y=1/2, Clear Anodize, A, 10'
- CR FCP375 50EC** CR-FCP: X=3/8, Y=1/2, Clear Anodize, A, 10'
- CR FCP375 50EP** CR-FCP: X=3/8, Y=1/2, Powder Coat, A, 10'
- CR FCP375 50ES** CR-FCP: X=3/8, Y=1/2, Stripped Finish, A, 10'



QUOTE	Company: _____	QTY: _____	PO Number: _____
	Name: _____	Material: Aluminum Alloy (6063 T-5)	Job/Project: _____
	Address: _____	Length: _____	Notes: _____
	City: _____		_____
	State/ZIP: _____		_____
	Phone: _____		_____
	eMail: _____		_____

877-786-2587 • StocktonProducts.com

