



**CUSTOM SIZES AVAILABLE!**

Stockton Custom Fabrication

877-786-2587

custom@StocktonProducts.com



**PRODUCTS™**

# CSB: Casing Starter Bead

- Custom Sizes Available, Contact Customer Service For Details
- SUPERIOR® Moisture Protection
- Available With 1/8", 1/2" Weep Holes or No Holes
- Available Curved Upon Request
- Available in Aluminum (A), Copper (C), Galvanized Steel (GS), Bonderized (BN), Galvalume® (GVM), Stainless Steel (SS) or Zinc (Z)

A stop used as a starting track for EIFS systems.

### Most Common Sizes

**X Sizes:** 3/8", 1/2", 5/8", 3/4", 7/8", 1", 1 1/8", 1 1/4", 1 3/8", 1 1/2", 1 5/8", 1 3/4", 2" or 2 1/2"

**Y Sizes:** 1 1/2", 2" or 3 1/2"

**Length:** 120"

### Materials And Finishes:

Details: [stpro.us/MET](http://stpro.us/MET)

Aluminum (A), Copper (C), Galvanized Steel (GS), Bonderized (BN), Galvalume® (GVM), Stainless Steel (SS) or Zinc (Z)

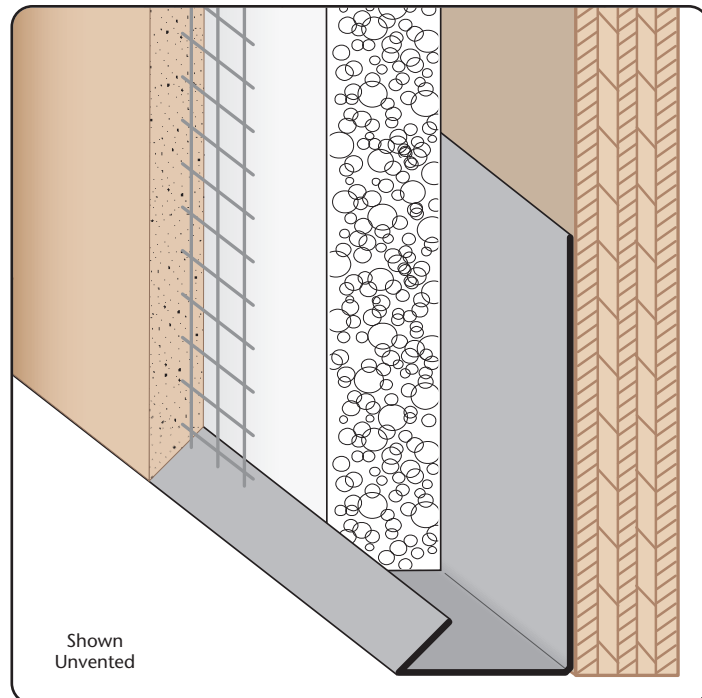
### ASTM Codes:

Details: [stpro.us/ASTM](http://stpro.us/ASTM)

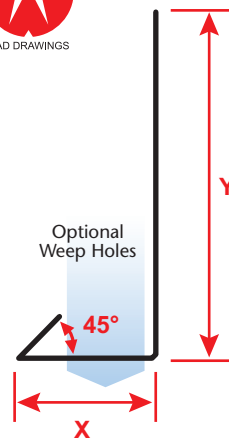
All Accessories are fabricated from prime galvanized steel G90 zinc coating by the hot dipped method, conforming to steel and coating specification ASTM A-653/A-653M or zinc alloy meeting ASTM B-69. Stainless Steel A480/A480M A580M (Stainless Steel) For installation and placement instructions refer to ASTM C1063, C841 and C926.

### Most Common Part Numbers:

<b>CSB034 112</b>	CSB: X=3/4, Y=1 1/2, GS, 10'
<b>CSB034 112C</b>	CSB: X=3/4, Y=1 1/2, C, 10'
<b>CSB034W312C</b>	CSB: X=3/4, 1/8 Weep Hole, Y=3 1/2, C, 10'
<b>CSB078 200</b>	CSB: X=7/8, Y=2, GS, 10'
<b>CSB114 112</b>	CSB: X=1 1/4, Y=1 1/2, GS, 10'
<b>CSB114W112</b>	CSB: X=1 1/4, 1/8 Weep, Y=1 1/2, GS, 10'
<b>CSB134 312</b>	CSB: X=1 3/4, Y=3 1/2, GS, 10'
<b>CSB200W312</b>	CSB: X=2, 1/8 Weep Holes, Y=3 1/2, GS, 10'



Shown Unvented



**QUOTE**

Company: \_\_\_\_\_  
 Name: \_\_\_\_\_  
 Address: \_\_\_\_\_  
 City: \_\_\_\_\_  
 State/ZIP: \_\_\_\_\_  
 Phone: \_\_\_\_\_  
 eMail: \_\_\_\_\_

QTY: \_\_\_\_\_  
 Material/Gauge: \_\_\_\_\_  
 X Size: \_\_\_\_\_  
 Y Size: \_\_\_\_\_  
 Length: \_\_\_\_\_  
 Weep Holes:  None  1/8"  1/2"

PO Number: \_\_\_\_\_  
 Job/Project: \_\_\_\_\_  
 Notes: \_\_\_\_\_  
 \_\_\_\_\_  
 \_\_\_\_\_

**877-786-2587 • StocktonProducts.com**

