



CUSTOM SIZES AVAILABLE!

Stockton Custom Fabrication

877-786-2587

custom@StocktonProducts.com



PRODUCTS™

CTM: Corner Transition Mold

- Custom Sizes Available, Contact Customer Service For Details
- Available With 1/8", 1/2" Weep Holes or No Holes
- Available in Aluminum (A), Copper (C), Galvanized Steel (GS), Bonderized (BN), Galvalume® (GVM), Stainless Steel (SS) or Zinc (Z)

A plaster stop used in various applications to finish an edge or bridge when using dissimilar materials. Can be used to support acoustical tile or to case off windows.

Most Common Sizes

X Sizes: 1/2", 5/8", 3/4", 7/8" or 1"

Y Sizes: 1", 2" or 3"

Length: 120"

Materials And Finishes:

Details: stpro.us/MET

Aluminum (A), Copper (C), Galvanized Steel (GS), Bonderized (BN), Galvalume® (GVM), Stainless Steel (SS) or Zinc (Z)

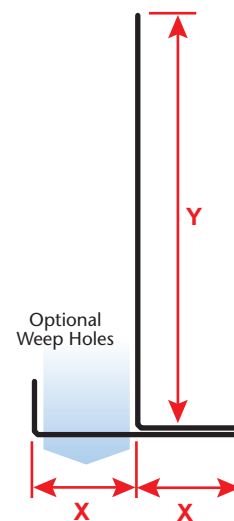
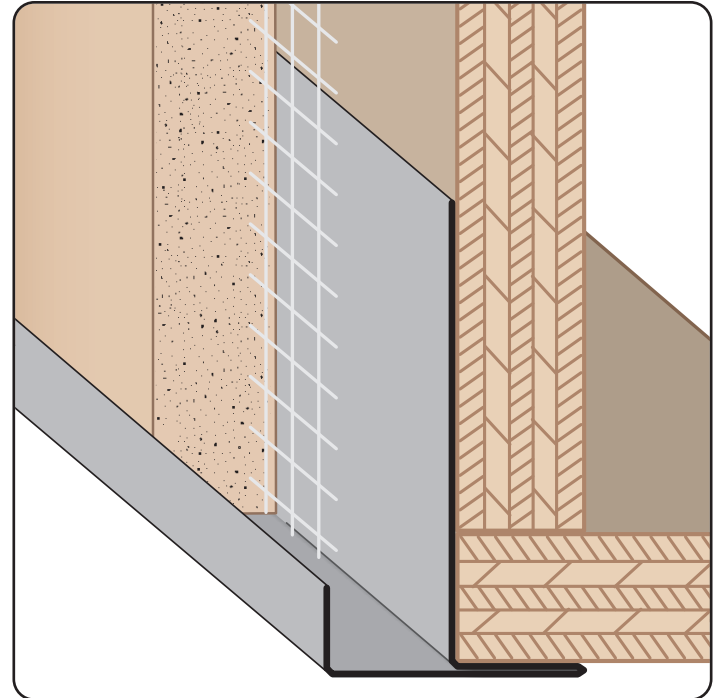
ASTM Codes:

Details: stpro.us/ASTM

All Accessories are fabricated from prime galvanized steel G90 zinc coating by the hot dipped method, conforming to steel and coating specification ASTM A-653/A-653M or zinc alloy meeting ASTM B-69. Stainless Steel A480/A480M A580M (Stainless Steel) For installation and placement instructions refer to ASTM C1063, C841 and C926.

Most Common Part Numbers:

CTM034 200	CTM: X=3/4, Y=2, GS, 10'
CTM078 200	CTM: X=7/8, Y=2, GS, 10'
CTM078 200 138	CTM: X=7/8, Y=2, GS, 10', 1 3/8 Return
CTM078 212A	CTM: X=7/8, Y=2 1/2, A, 10'
CTM078 212A	CTM: X=7/8, Y=2 1/2, A, 10'
CTM078 300	CTM: X=7/8, Y=2, GS, 10'
CTM078 412A	CTM: X=7/8, Y=4 1/2, A, 10'
CTM78W312L	CTM: X=7/8, 1/2 Weep Hole, Y=2, GS, 10'



QUOTE	Company: _____	QTY: _____	PO Number: _____
	Name: _____	Material/Gauge: _____	Job/Project: _____
	Address: _____	X Size: _____	Notes: _____
	City: _____	Y Size: _____	_____
	State/ZIP: _____	Length: _____	_____
	Phone: _____	Weep Holes: <input type="checkbox"/> None <input type="checkbox"/> 1/8" <input type="checkbox"/> 1/2"	_____
	eMail: _____		_____

877-786-2587 • StocktonProducts.com

