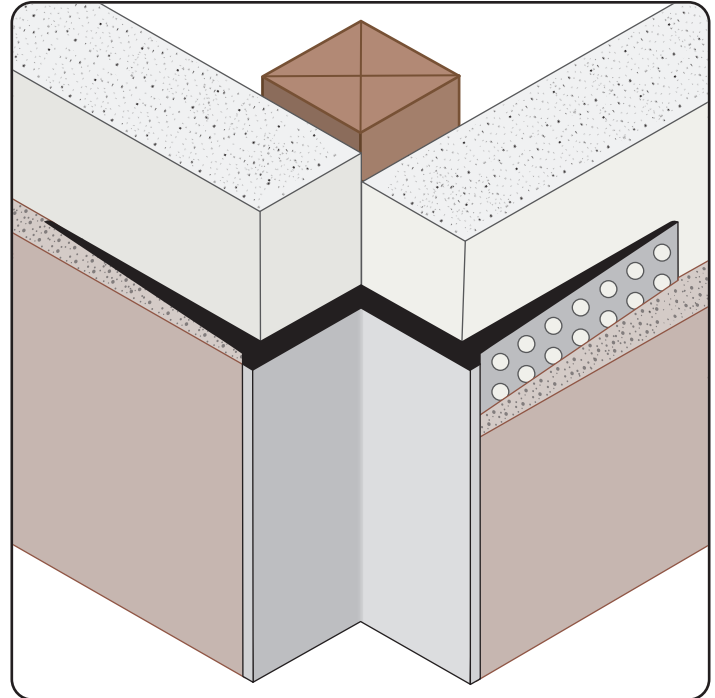


# DRMW: W Corner Reveal

- Available Curved Upon Request
  - Available in Aluminum Alloy (6063 T-5)
- "W" style drywall molding with taping flanges that creates an inverted corner for setbacks, stepdowns and other special drywall conditions. Includes key holes for drywall mud adhesion.



**Most Common Sizes**  
**X Sizes:** 1/2" or 5/8"  
**Length:** 10"

### Materials And Finishes:

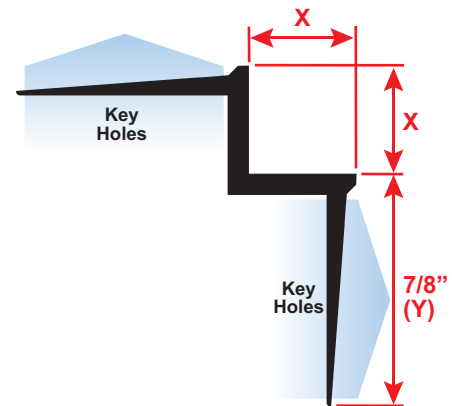
Details: [stpro.us/EXT](http://stpro.us/EXT)  
 Aluminum Alloy (6063 T-5)

### ASTM Codes:

Details: [stpro.us/ASTM](http://stpro.us/ASTM)  
 AA-M32-C10A21, AAMA 605.2, C841, C1047, C1063, B136-84,  
 B244-97, D4214-98, ND1730-67-TYPE B

### Most Common Part Numbers:

**DRMW625 625EC** DRWM: X=5/8, Y=5/8, Clear Anodize, A, 10'  
**DRMW625 625ECH** DRWM: X=5/8, Y=5/8, Chem-Film, A, 10'



<b>QUOTE</b>	Company: _____	QTY: _____	PO Number: _____
	Name: _____	Material: Aluminum Alloy (6063 T-5)	Job/Project: _____
	Address: _____	X Size: _____	Notes: _____
	City: _____	Length: _____	_____
	State/ZIP: _____		_____
	Phone: _____		_____
	eMail: _____		_____

**877-786-2587 • StocktonProducts.com**

