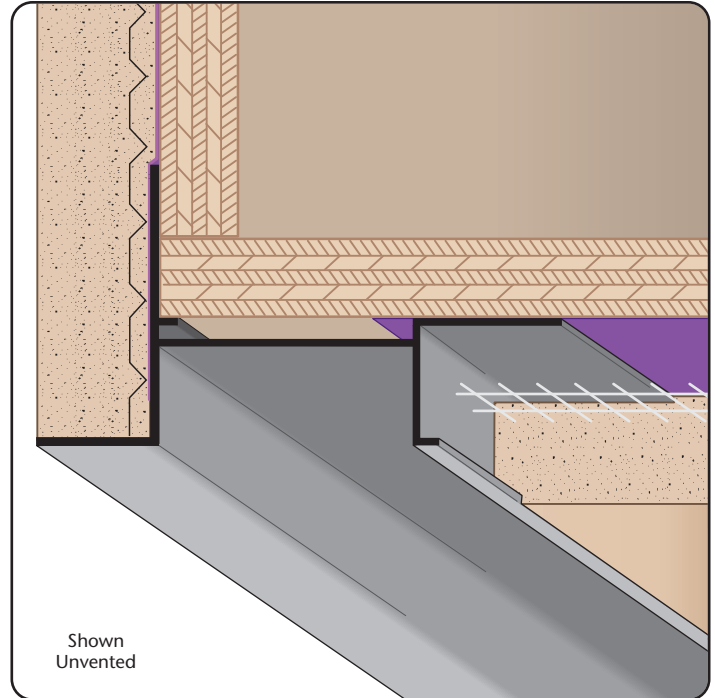


DS300: Drip Screed 3" Reveal

- Available With 1/8" x 1" Vent Slots or No Vents
- Available Curved Upon Request
- Available in Aluminum Alloy (6063 T-5)

An aesthetically pleasing drip screed for stucco that functions as a plaster stop/drip edge and creates a reveal at the fascia/soffit corner condition.

Note: Available vented. Non-vented is a special order. Please consult with customer service.



Most Common Sizes

Length: 10'

Materials And Finishes:

Details: stpro.us/EXT

Aluminum Alloy (6063 T-5)

ASTM Codes:

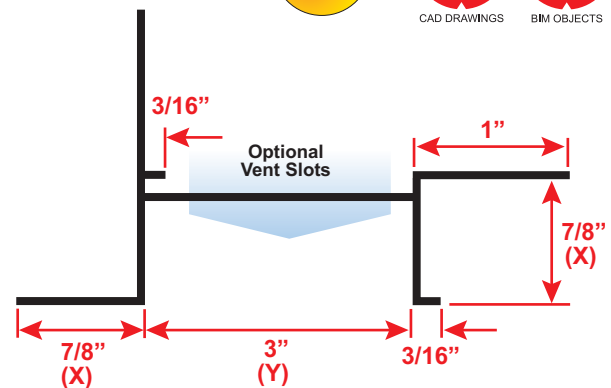
Details: stpro.us/ASTM

AA-M32-C10A21, AAMA 605.2, C841, C1047, C1063, B136-84, B244-97, D4214-98, ND1730-67-TYPE B

Most Common Part Numbers:

DS300 875 300EC DS300: X=7/8, Y=3, Clear Anod, A, 10'

DS300 875 300ES DS300: X=7/8, Y=3, Stripped Finish, A, 10'



QUOTE	Company: _____	QTY: _____	PO Number: _____
	Name: _____	Material: Aluminum Alloy (6063 T-5)	Job/Project: _____
	Address: _____	Length: _____	Notes: _____
	City: _____	Vent Slot: <input type="checkbox"/> None <input type="checkbox"/> 1/8" x 1"	_____
	State/ZIP: _____		_____
	Phone: _____		_____
	eMail: _____		_____

877-786-2587 • StocktonProducts.com

