



CUSTOM SIZES AVAILABLE!

Stockton Custom Fabrication

877-786-2587

custom@StocktonProducts.com



PRODUCTS™

DTR: Drywall Termination Reveal

- Custom Sizes Available, Contact Customer Service For Details
- Available Curved Upon Request
- Available in Aluminum (A), Copper (C), Galvanized Steel (GS), Bonderized (BN), Galvalume® (GVM), Stainless Steel (SS) or Zinc (Z)

Drywall reveal molding used at door frames and wall base application. Includes key holes for drywall mud adhesion.

Most Common Sizes

X Sizes: 1/2" or 5/8"

Y Sizes: 1/2", 3/4", 1", 1 1/2", 2", 2 1/2", 3", 3 1/2" or 4"

Length: 120"

Materials And Finishes:

Details: stpro.us/MET

Aluminum (A), Copper (C), Galvanized Steel (GS), Bonderized (BN), Galvalume® (GVM), Stainless Steel (SS) or Zinc (Z)

ASTM Codes:

Details: stpro.us/ASTM

All Accessories are fabricated from prime galvanized steel G90 zinc coating by the hot dipped method, conforming to steel and coating specification ASTM A-653/A-653M or zinc alloy meeting ASTM B-69. Stainless Steel A480/A480M A580M (Stainless Steel) For installation and placement instructions refer to ASTM C1063, C841 and C926.

Most Common Part Numbers:

DTR012 038SS DTR: X=1/2, Y=3/8, SS, 10'

DTR012 312A DTR: X=1/2, Y=3 1/2, A, 10'

DTR058 034AK DTR: X=5/8, Y=3/4, Fluorophore, A

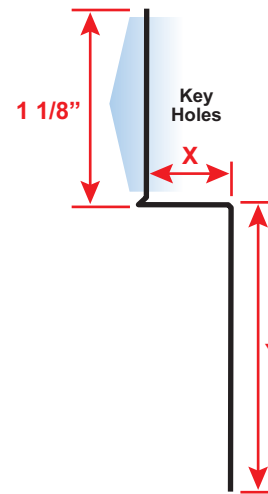
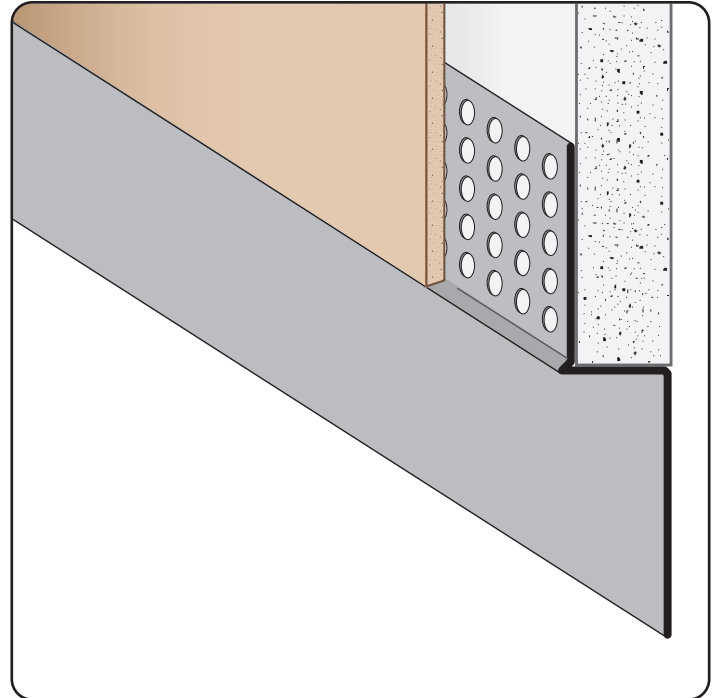
DTR058 034SS DTR: X=5/8, Y=3/4, SS, 10'

DTR058 058 DTR: X=5/8, Y=5/8, GS, 10'

DTR058 112SS DTR: X=5/8, Y=1 1/2, SS, 10'

DTR058 212JTC DTR: X=5/8, Y=2 1/2, Jet Kote, GS, 10'

DTR058 300JTC DTR: X=5/8, Y=3, Jet Kote, GS, 10'



QUOTE	Company: _____	QTY: _____	PO Number: _____
	Name: _____	Material/Gauge: _____	Job/Project: _____
	Address: _____	X Size: _____	Notes: _____
	City: _____	Y Size: _____	_____
	State/ZIP: _____	Length: _____	_____
	Phone: _____		_____
	eMail: _____		_____

877-786-2587 • StocktonProducts.com

