



CUSTOM SIZES AVAILABLE!

Stockton Custom Fabrication

877-786-2587

custom@StocktonProducts.com



PRODUCTS™

ECS: Channel Vent Screed - 2 Piece

- Custom Sizes Available, Contact Customer Service For Details
- Available With 1/8", 1/4" Vent Holes or No Vent
- Available in Aluminum (A), Copper (C), Galvanized Steel (GS), Bonderized (BN), Galvalume® (GVM), Stainless Steel (SS) or Zinc (Z)

Adjustable version of our Plaster Channel Screed that permits movement. Can be vented for air flow.

Most Common Sizes

X Sizes: 3/8", 1/2", 5/8", 3/4", 7/8" or 1"

Y Sizes: 3/4", 1", 1 1/2", 2", 2 1/2", 3" or 3 1/2"

Length: 120"

Materials And Finishes:

Details: stpro.us/MET

Aluminum (A), Copper (C), Galvanized Steel (GS), Bonderized (BN), Galvalume® (GVM), Stainless Steel (SS) or Zinc (Z)

ASTM Codes:

Details: stpro.us/ASTM

653-CS, A1018, A262, A36, A513, A653, A792, A924, B 370-12, B-209, B-209, B6/B69, C1047, C1063, C841, ML/SFA 920

Most Common Part Numbers:

ECS034 012 ECS: X=3/4, Y=1/2, GS, 10'

ECS034 100 ECS: X=3/4, Y=1, GS, 10'

ECS038V312 ECS: X=3/8, 1/8 Vent, Y=3 1/2, GS, 10'

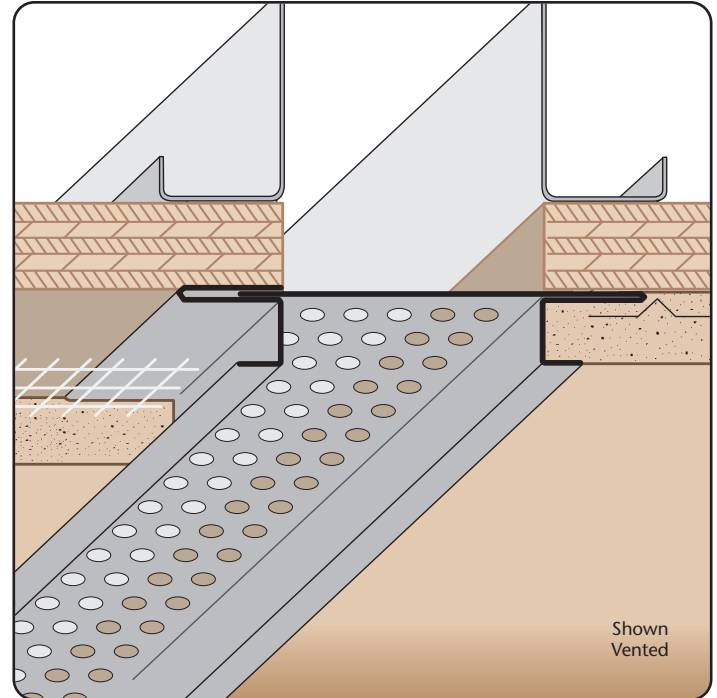
ECS058V112 ECS: X=5/8, 1/8 Vent, Y= 1 1/2, GS, 10'

ECS058V112J ECS: X=5/8, 1/4 Vent, Y=1 1/2, GS, 10'

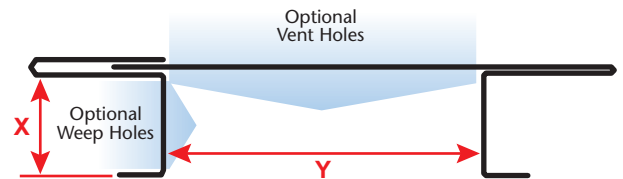
ECS078 038 ECS: X=7/8, Y=3/8, GS, 10'

ECS078 300 ECS: X=7/8, Y=3, GS, 10'

ECS138 012 ECS: X=1 3/8, Y=1/2, GS, 10'



Shown Vented



QUOTE	Company: _____	QTY: _____	PO Number: _____
	Name: _____	Material/Gauge: _____	Job/Project: _____
	Address: _____	X Size: _____	Notes: _____
	City: _____	Y Size: _____	_____
	State/ZIP: _____	Length: _____	_____
	Phone: _____	Vent Holes: <input type="checkbox"/> None <input type="checkbox"/> 1/8" <input type="checkbox"/> 1/4"	_____
	eMail: _____		_____

877-786-2587 • StocktonProducts.com

