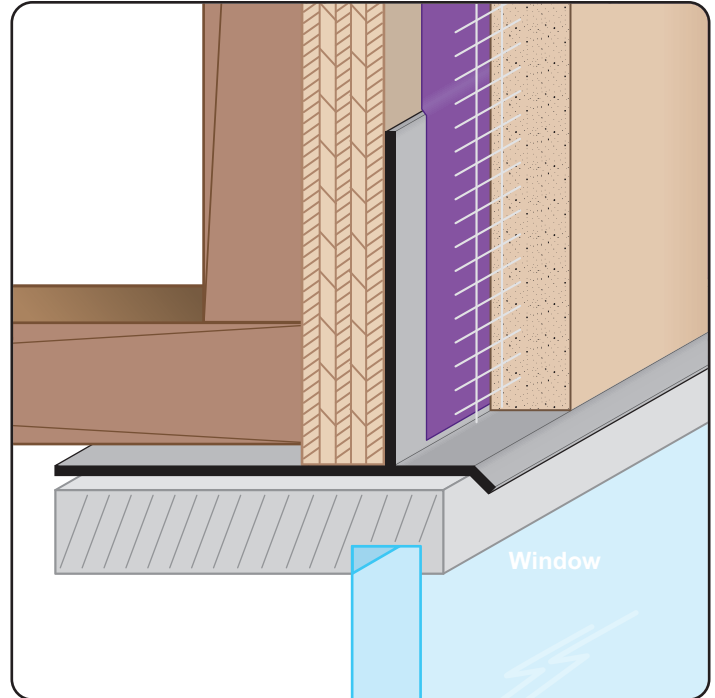


FRWDM: Fascia/Recessed Window Drip Molding

- Available Curved Upon Request
 - Available in Aluminum Alloy (6063 T-5)
- A plaster stop for fascia/soffit corner conditions that provides a 3 1/8" reveal leg with a drip edge for recessed window conditions where a drip edge is required. Can also be used when a caulking leg is required for backer rod and sealant.



Most Common Sizes
X Sizes: 7/8" or 1 3/8"
Length: 10'

Materials And Finishes:

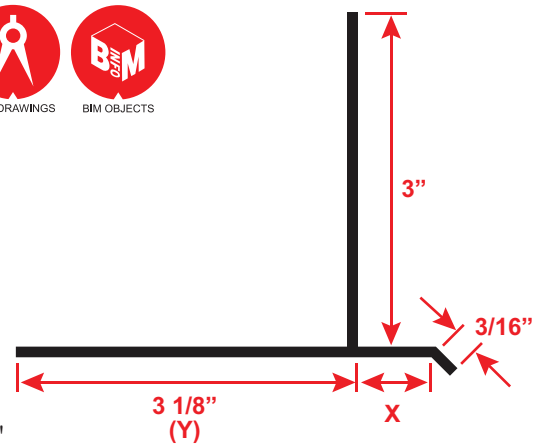
Details: stpro.us/EXT
 Aluminum Alloy (6063 T-5)

ASTM Codes:

Details: stpro.us/ASTM
 AA-M32-C10A21, AAMA 605.2, C841, C1047, C1063,
 B136-84, B244-97, D4214-98, ND1730-67-TYPE B

Most Common Part Numbers:

FRWDM138 400EC	FRWDM: X=1 3/8, Y=4, Clear Anodize, A, 10'
FRWDM138 400EDB	FRWDM: X=3/4, Y=4, Dark Bronze, A, 10'
FRWDM138 400EDB14FT	FRWDM: X=1 3/8, Y=4, Dark Bronze, A, 14'
FRWDM75 100EC	FRWDM: X=3/4, Y=1, Clear Anodize, A, 10'



QUOTE	Company: _____	QTY: _____	PO Number: _____
	Name: _____	Material: Aluminum Alloy (6063 T-5)	Job/Project: _____
	Address: _____	X Size: _____	Notes: _____
	City: _____	Length: _____	_____
	State/ZIP: _____		_____
	Phone: _____		_____
	eMail: _____		_____

877-786-2587 • StocktonProducts.com

