



CUSTOM SIZES AVAILABLE!

Stockton Custom Fabrication

877-786-2587

custom@StocktonProducts.com



PRODUCTS™

FWC: F Water-Resistant Channel

- Custom Sizes Available, Contact Customer Service For Details
- SUPERIOR® Moisture Protection
- SolidGround® Design For Moisture Protection
- Available in Aluminum (A), Copper (C), Galvanized Steel (GS), Bonderized (BN), Galvalume® (GVM), Stainless Steel (SS) or Zinc (Z)

One-piece design feature mitigates the concern of moisture penetration in a horizontal application. Matching customer service miter-cut, solid-soldered inside and outside corners are available, giving you moisture management confidence throughout the entire installation.

Most Common Sizes

X Sizes: 3/4", 7/8", 1", 1 1/4" or 1 3/8"

Y Sizes: 1/2", 3/4", 1", 1 1/2" or 2"

Length: 120"

Materials And Finishes:

Details: stpro.us/MET

Aluminum (A), Copper (C), Galvanized Steel (GS), Bonderized (BN), Galvalume® (GVM), Stainless Steel (SS) or Zinc (Z)

ASTM Codes:

Details: stpro.us/ASTM

All Accessories are fabricated from prime galvanized steel G90 zinc coating by the hot dipped method, conforming to steel and coating specification ASTM A-653/A-653M or zinc alloy meeting ASTM B-69. Stainless Steel A480/A480M A580M (Stainless Steel) For installation and placement instructions refer to ASTM C1063, C841 and C926.

Most Common Part Numbers:

FWC012 034 FWC: X=1/2, Y=3/4, GS, 10'

FWC034 012 FWC: X=3/4, Y=1/2, GS, 10'

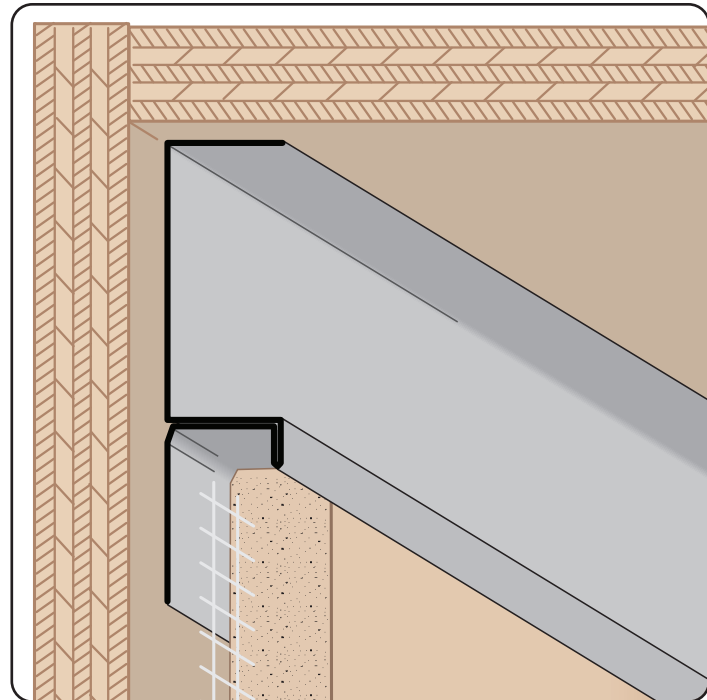
FWC034 034 FWC: X=3/4, Y=3/4, GS, 10'

FWC034 034Z FWC: X=3/4, Y=3/4, Z, 10'

FWC034 100 FWC: X=3/4, Y= 1, GS, 10'

FWC034 200 FWC: X=3/4, Y=2, GS, 10'

FWC078 100 FWC: X=7/8, Y=1, GS, 10'



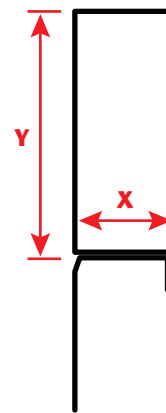
SUPERIOR
Moisture
Protection



SPECIFICATIONS



CAD DRAWINGS



QUOTE

Company: _____
 Name: _____
 Address: _____
 City: _____
 State/ZIP: _____
 Phone: _____
 eMail: _____

QTY: _____
 Material/Gauge: _____
 X Size: _____
 Y Size: _____
 Length: _____

PO Number: _____
 Job/Project: _____
 Notes: _____

877-786-2587 • StocktonProducts.com

