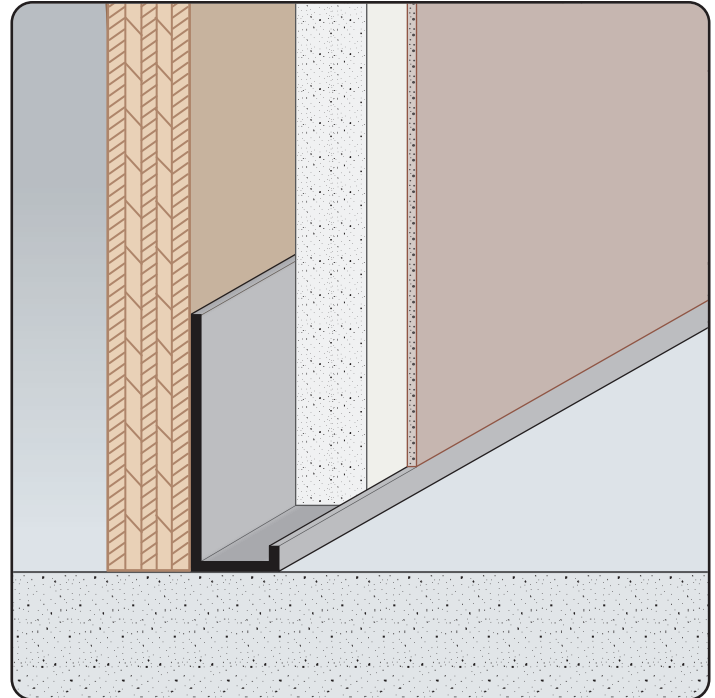


JDM: J Drywall Molding

- Available Curved Upon Request
 - Available in Aluminum Alloy (6063 T-5)
- A drywall version of the "J" molding. Gives a nice finished look to drywall terminations.



Most Common Sizes
X Sizes: 1/2" or 5/8"
Length: 10'

Materials And Finishes:

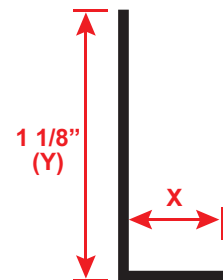
Details: stpro.us/EXT
 Aluminum Alloy (6063 T-5)

ASTM Codes:

Details: stpro.us/ASTM
 AA-M32-C10A21, AAMA 605.2, C841, C1047, C1063,
 B136-84, B244-97, D4214-98, ND1730-67-TYPE B

Most Common Part Numbers:

JDM50EC	JDM: X=1/2, Y=1 1/8, Clear Anodize, A, 10'
JDM50EC	JDM: X=1/2, Y=1 1/8, Clear Anodize, A, 10'
JDM50EPC	JDM: X=1/2, Y=1 1/8, Powder Coated, A, 10'
JDM625E	JDM: X=1/2, Y=1 1/8, Mill Finish, A, 10'
JDM625E	JDM: X=1/2, Y=1 1/8, Mill Finish, A, 10'
JDM625EC	JDM: X=5/8, Y=1 1/8, Clear Anodize, A, 10'
JDM625EC	JDM: X=5/8, Y=1 1/8, Clear Anodize, A, 10'
JDM625ECH	JDM: X=1/2, Y=1 1/8, Chem-Film, A, 10'



QUOTE	Company: _____	QTY: _____	PO Number: _____
	Name: _____	Material: Aluminum Alloy (6063 T-5)	Job/Project: _____
	Address: _____	X Size: _____	Notes: _____
	City: _____	Length: _____	_____
	State/ZIP: _____		_____
	Phone: _____		_____
	eMail: _____		_____

877-786-2587 • StocktonProducts.com

