



CUSTOM SIZES AVAILABLE!

Stockton Custom Fabrication

877-786-2587

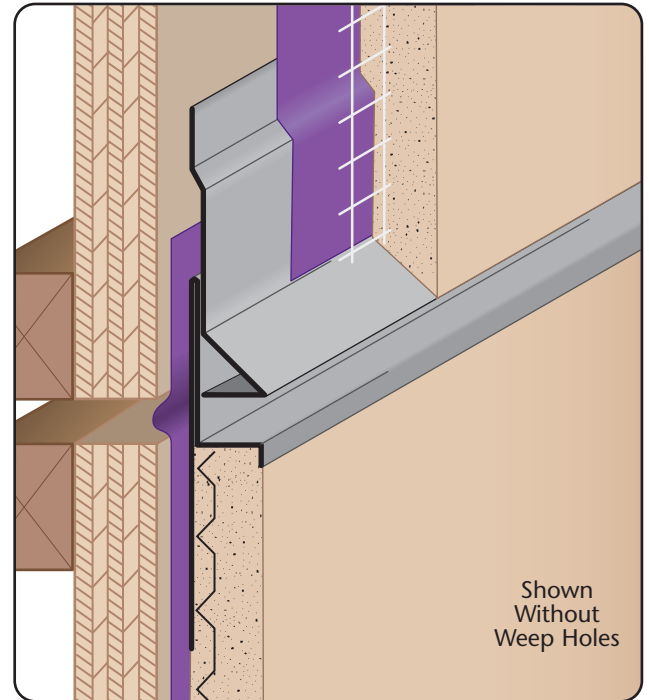
custom@StocktonProducts.com



MSXE: Econo M-Slide Expansion Joint® - 2 Piece

- Custom Sizes Available, Contact Customer Service For Details
- Available With 1/4", 1/2" Weep Holes or No Holes
- Available in Aluminum (A), Copper (C), Galvanized Steel (GS), Bonderized (BN), Galvalume® (GVM), Stainless Steel (SS) or Zinc (Z)

Econo M-Slide Expansion Joint® is a version of the M-Slide Expansion Joint® product line that does not have the additional back leg behind the sloped screed along the upper portion of the profile. The dual function self-aligning expansion joint provides movement capability at floor line while allowing moisture to release from the top ground and lock out moisture from the bottom.



Shown Without Weep Holes

Most Common Part Numbers:

X Sizes: 3/4", 7/8" or 1 1/4"

Y Sizes: 2", 2 1/2" or 3"

Z Sizes: 2 1/2", 3" or 3 1/2"

Length: 120"

Materials And Finishes:

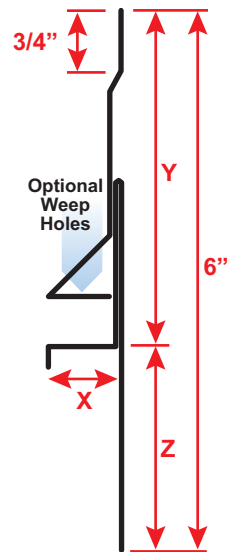
Details: stpro.us/MET

Aluminum (A), Copper (C), Galvanized Steel (GS), Bonderized (BN), Galvalume® (GVM), Stainless Steel (SS) or Zinc (Z)

ASTM Codes:

Details: stpro.us/ASTM

All Accessories are fabricated from prime galvanized steel G90 zinc coating by the hot dipped method, conforming to steel and coating specification ASTM A-653/A-653M or zinc alloy meeting ASTM B-69. Stainless Steel A480/A480M A580M (Stainless Steel) For installation and placement instructions refer to ASTM C1063, C841 and C926.



QUOTE	Company: _____	QTY: _____	Length: _____
	Name: _____	Material/Gauge: _____	PO Number: _____
	Address: _____	X Size: _____	Job/Project: _____
	City: _____	Y Size: _____	Notes: _____
	State/ZIP: _____	Z Size: _____	_____
	Phone: _____	Weep Holes: <input type="checkbox"/> None <input type="checkbox"/> 1/4" <input type="checkbox"/> 1/2"	_____
	eMail: _____	Weep Slots: <input type="checkbox"/> None <input type="checkbox"/> 3/16 x 2"	_____

877-786-2587 • StocktonProducts.com

