



**CUSTOM SIZES AVAILABLE!**

Stockton Custom Fabrication

877-786-2587

custom@StocktonProducts.com



**PRODUCTS™**

## NFD: #5 Drip

- Custom Sizes Available, Contact Customer Service For Details
- SUPERIOR® Moisture Protection
- Available With 1/2" Key Holes or No Holes
- Available in Aluminum (A), Copper (C), Galvanized Steel (GS), Bonderized (BN), Galvalume® (GVM), Stainless Steel (SS) or Zinc (Z)

A drip screed that helps align the soffit to give it a clean, straight edge at the fascia/soffit line.

**Note:** Curving this item is limited. Please consult customer service for more information.

### Most Common Sizes

**X Sizes:** 3/4", 7/8" or 1 3/8"

**Y Sizes:** 2", 3 1/2" or 4"

**Length:** 120"

### Materials And Finishes:

Details: [stpro.us/MET](http://stpro.us/MET)

Aluminum (A), Copper (C), Galvanized Steel (GS), Bonderized (BN), Galvalume® (GVM), Stainless Steel (SS) or Zinc (Z)

### ASTM Codes:

Details: [stpro.us/ASTM](http://stpro.us/ASTM)

All Accessories are fabricated from prime galvanized steel G90 zinc coating by the hot dipped method, conforming to steel and coating specification ASTM A-653/A-653M or zinc alloy meeting ASTM B-69. Stainless Steel A480/A480M A580M (Stainless Steel) For installation and placement instructions refer to ASTM C1063, C841 and C926.

### Most Common Part Numbers:

**NFD034 312** NFD: X=3/4, Y=3 1/2, GS, 10'

**NFD078 200** NFD: X=7/8, Y=2, GS, 10'

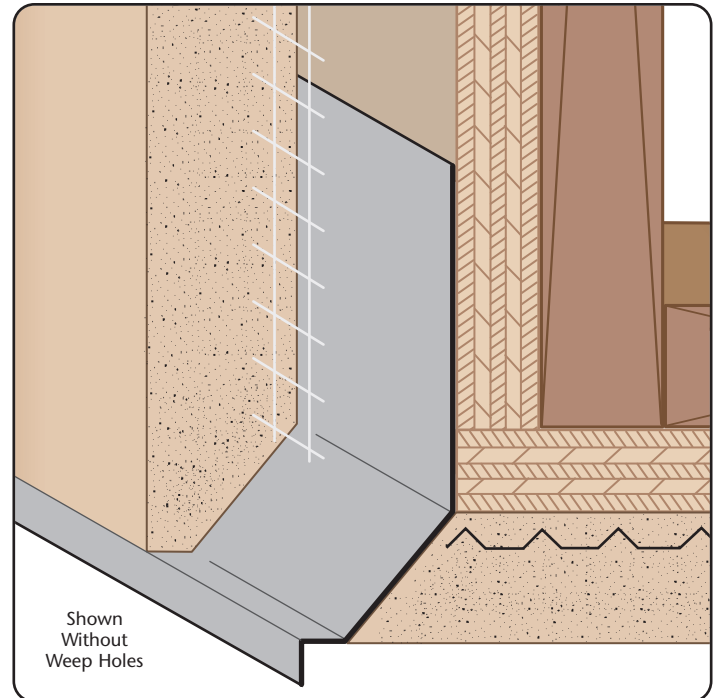
**NFD078 312** NFD: X=7/8, Y=3 1/2, GS, 10'

**NFD078 400** NFD: X=7/8, Y=4, GS, 10'

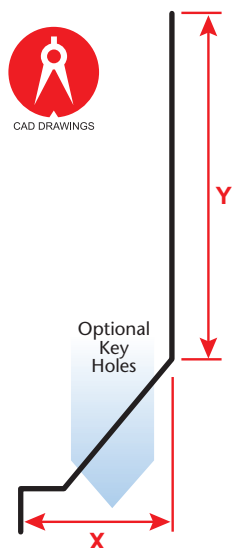
**NFD078W200** NFD: X=7/8, 1/8 Weep Hole, Y=2, GS, 10'

**NFD078W312** NFD: X=7/8, 1/8 Weep Hole, Y=3 1/2, GS, 10'

**NFD138 312** NFD: X=1 3/8, Y=3 1/2, GS, 10'



Shown Without Weep Holes



**QUOTE**

Company: \_\_\_\_\_  
 Name: \_\_\_\_\_  
 Address: \_\_\_\_\_  
 City: \_\_\_\_\_  
 State/ZIP: \_\_\_\_\_  
 Phone: \_\_\_\_\_  
 eMail: \_\_\_\_\_

QTY: \_\_\_\_\_  
 Material/Gauge: \_\_\_\_\_  
 X Size: \_\_\_\_\_  
 Y Size: \_\_\_\_\_  
 Length: \_\_\_\_\_  
 Key Holes:  None  1/2"

PO Number: \_\_\_\_\_  
 Job/Project: \_\_\_\_\_  
 Notes: \_\_\_\_\_  
 \_\_\_\_\_  
 \_\_\_\_\_

**877-786-2587 • StocktonProducts.com**

