



**CUSTOM SIZES AVAILABLE!**

Stockton Custom Fabrication

877-786-2587

custom@StocktonProducts.com



**PRODUCTS™**

## NTD: #2 Drip

- Custom Sizes Available, Contact Customer Service For Details
- No Weep Holes
- Available Curved Upon Request
- Available in Aluminum (A), Copper (C), Galvanized Steel (GS), Bonderized (BN), Galvalume® (GVM), Stainless Steel (SS) or Zinc (Z)

A plaster drip screed that helps align the soffit to give it a clean, straight edge at the fascia/soffit line. Provides a unique 3/4" "flush" reveal at the fascia.

**Note:** Curving this item is limited. Please consult customer service for more information.

### Most Common Sizes

**X Sizes:** 7/8" or 1 3/8"

**Y Sizes:** 1 3/4" or 3 1/2"

**Length:** 120"

### Materials And Finishes:

Details: [stpro.us/MET](http://stpro.us/MET)

Aluminum (A), Copper (C), Galvanized Steel (GS), Bonderized (BN), Galvalume® (GVM), Stainless Steel (SS) or Zinc (Z)

### ASTM Codes:

Details: [stpro.us/ASTM](http://stpro.us/ASTM)

All Accessories are fabricated from prime galvanized steel G90 zinc coating by the hot dipped method, conforming to steel and coating specification ASTM A-653/A-653M or zinc alloy meeting ASTM B-69. Stainless Steel A480/A480M A580M (Stainless Steel) For installation and placement instructions refer to ASTM C1063, C841 and C926.

### Most Common Part Numbers:

**NTD078 134** NTD: X=7/8, Y=1 3/4, GS, 10'

**NTD078 134A** NTD: X=7/8, Y=1 3/4, A, 10'

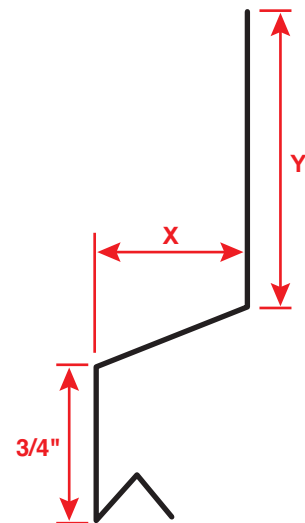
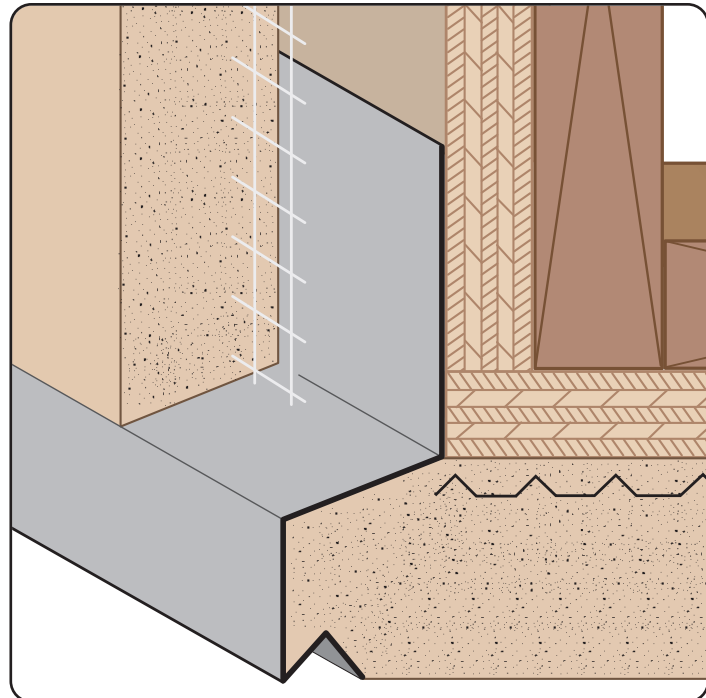
**NTD078 134C** NTD: X=7/8, Y=1 3/4, C, 10'

**NTD078 134Z** NTD: X=7/8, Y=1 3/4, Z, 10'

**NTD078 312** NTD: X=7/8, Y=3 1/2, GS, 10'

**NTD100 312SS4** NTD: X=1, Y=3 1/2, SS, 4'

**NTD138 312** NTD: X=1 3/8, Y=3 1/2, GS, 10'



<b>QUOTE</b>	Company: _____	QTY: _____	PO Number: _____
	Name: _____	Material/Gauge: _____	Job/Project: _____
	Address: _____	X Size: _____	Notes: _____
	City: _____	Y Size: _____	_____
	State/ZIP: _____	Length: _____	_____
	Phone: _____		_____
	eMail: _____		_____

**877-786-2587 • StocktonProducts.com**

