



CUSTOM SIZES AVAILABLE!

Stockton Custom Fabrication

877-786-2587

custom@StocktonProducts.com



OEC: Offset Expansion Channel Screed - 2 Piece

- Custom Sizes Available, Contact Customer Service For Details
- Available With 1/8", 1/4" Vent Holes or No Holes
- Available in Aluminum (A), Copper (C), Galvanized Steel (GS), Bonderized (BN), Galvalume® (GVM), Stainless Steel (SS) or Zinc (Z)

Two piece adjustable version of our Offset Plaster Channel Screed that permits movement in a double stud condition or at a floor line.

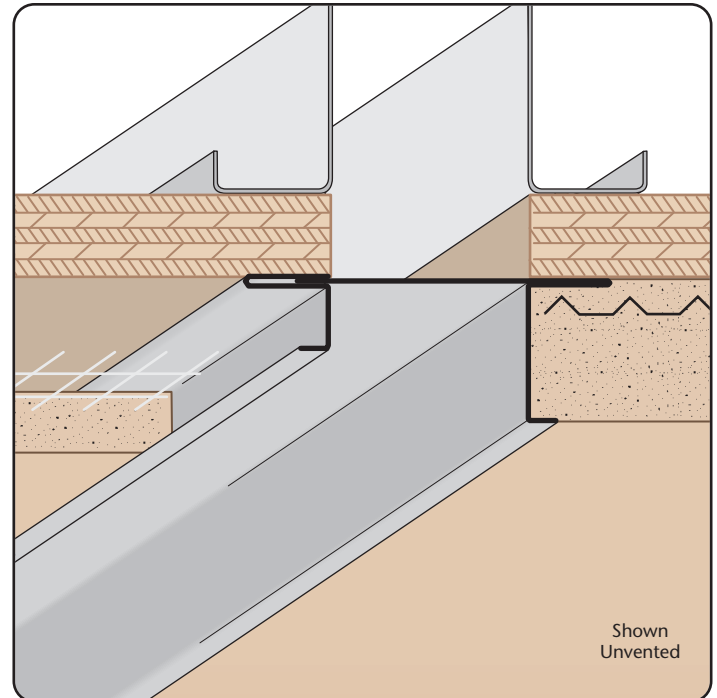
Most Common Sizes

X Sizes: 3/8", 1/2", 3/4", 7/8", 1" or 1 3/8"

Y Sizes: 3/4", 1 1/2" or 2"

Z Sizes: 1/2", 3/4", 7/8", 1", 1 1/4", 1 3/8", 1 3/4" or 2"

Length: 120"



Shown Unvented

Materials And Finishes:

Details: stpro.us/MET

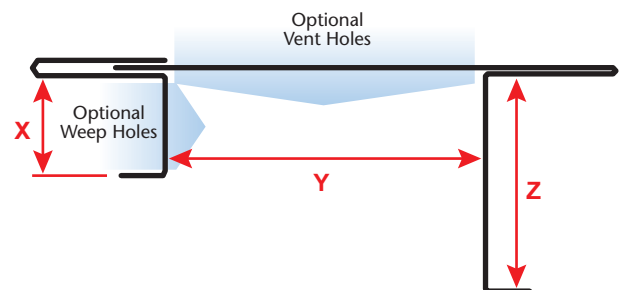
Aluminum (A), Copper (C), Galvanized Steel (GS), Bonderized (BN), Galvalume® (GVM), Stainless Steel (SS) or Zinc (Z)



ASTM Codes:

Details: stpro.us/ASTM

All Accessories are fabricated from prime galvanized steel G90 zinc coating by the hot dipped method, conforming to steel and coating specification ASTM A-653/A-653M or zinc alloy meeting ASTM B-69. Stainless Steel A480/A480M A580M (Stainless Steel) For installation and placement instructions refer to ASTM C1063, C841 and C926.



Most Common Part Numbers:

OEC038 075 050 OEC: X=3/8, Y=3/4, Z=1/2, GS, 10'

QUOTE	Company: _____	QTY: _____	PO Number: _____
	Name: _____	Material/Gauge: _____	Job/Project: _____
	Address: _____	X Size: _____	Notes: _____
	City: _____	Y Size: _____	_____
	State/ZIP: _____	Z Size: _____	_____
	Phone: _____	Length: _____	_____
	eMail: _____	Vent Holes: <input type="checkbox"/> None <input type="checkbox"/> 1/8" <input type="checkbox"/> 1/4"	_____

877-786-2587 • StocktonProducts.com

