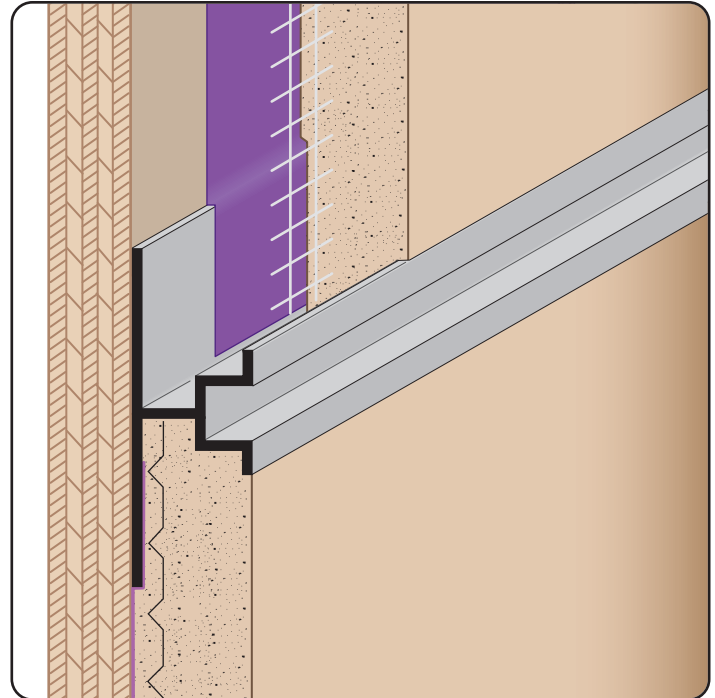


PCS 50-25/25: Plaster Channel Screed 50-25/25

- Available Curved Upon Request
 - Available in Aluminum Alloy (6063 T-5)
- Plaster channel screed with minimal reveal width and ground depth for conditions that require a control joint with a small reveal for 1/2" of stucco.



Most Common Sizes

Length: 10'

Materials And Finishes:

Details: stpro.us/EXT

Aluminum Alloy (6063 T-5)

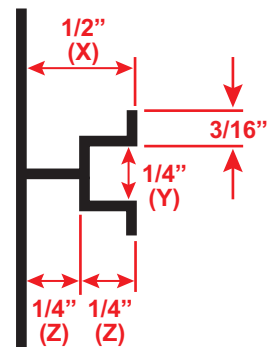
ASTM Codes:

Details: stpro.us/ASTM

AA-M32-C10A21, AAMA 605.2, C841, C1047, C1063, B136-84, B244-97, D4214-98, ND1730-67-TYPE B

Most Common Part Numbers:

- PCS75 25 25EB** PCS 50-25/25: X=1/2, Y=1/4, Z=1/4, Medium Bronza Anodize, A, 10'
- PCS75 25 25EC** PCS 50-25/25: X=1/2, Y=1/4, Z=1/4, Clear Anodize, A, 10'
- PCS75 25 25EK** PCS 50-25/25: X=1/2, Y=1/4, Z=1/4, Fluorophore Paint, A, 10'
- PCS75 25 25EPC** PCS 50-25/25: X=1/2, Y=1/4, Z=1/4, Powder Coat, A, 10'



QUOTE	Company: _____	QTY: _____	PO Number: _____
	Name: _____	Material: Aluminum Alloy (6063 T-5)	Job/Project: _____
	Address: _____	Length: _____	Notes: _____
	City: _____		_____
	State/ZIP: _____		_____
	Phone: _____		_____
	eMail: _____		_____

877-786-2587 • StocktonProducts.com

