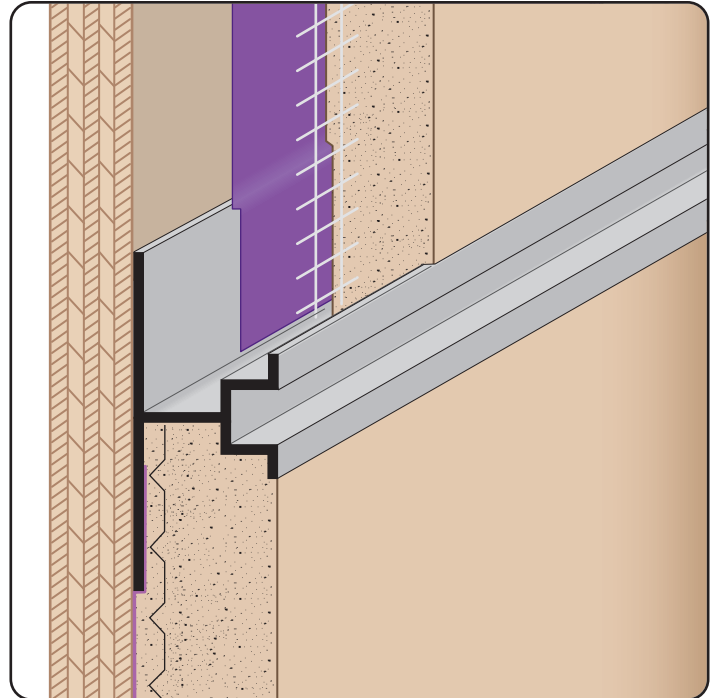


# PCS 75-25/25: Plaster Channel Screed 75-25/25

- Available Curved Upon Request
  - Available in Aluminum Alloy (6063 T-5)
- Plaster channel screed with minimal reveal width and ground depth for conditions that require a control joint with a small reveal.



### Most Common Sizes

Length: 10'

### Materials And Finishes:

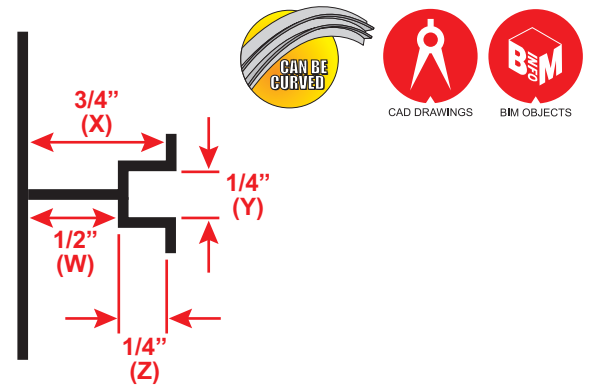
Details: [stpro.us/EXT](http://stpro.us/EXT)

Aluminum Alloy (6063 T-5)

### ASTM Codes:

Details: [stpro.us/ASTM](http://stpro.us/ASTM)

AA-M32-C10A21, AAMA 605.2, C841, C1047, C1063, B136-84, B244-97, D4214-98, ND1730-67-TYPE B



### Most Common Part Numbers:

<b>PCS752525 50 75 25 25EB</b>	PCS 75-25/25: W=1/2, X=3/4, Y=1/4, Z=1/4, Medium Bronza Anodize, A, 10'
<b>PCS752525 50 75 25 25EC</b>	PCS 75-25/25: W=1/2, X=3/4, Y=1/4, Z=1/4, Clear Anodize, A, 10'
<b>PCS752525 50 75 25 25EK</b>	PCS 75-25/25: W=1/2, X=3/4, Y=1/4, Z=1/4, Fluorophore Paint, A, 10'
<b>PCS752525 50 75 25 25EPC</b>	PCS 75-25/25: W=1/2, X=3/4, Y=1/4, Z=1/4, Powder Coat, A, 10'

<b>QUOTE</b>	Company: _____	QTY: _____	PO Number: _____
	Name: _____	Material: Aluminum Alloy (6063 T-5)	Job/Project: _____
	Address: _____	Length: _____	Notes: _____
	City: _____		_____
	State/ZIP: _____		_____
	Phone: _____		_____
	eMail: _____		_____

**877-786-2587 • StocktonProducts.com**

