



CUSTOM SIZES AVAILABLE!

Stockton Custom Fabrication

877-786-2587

custom@StocktonProducts.com



PRODUCTS™

SPS: Single Point Screed

- Custom Sizes Available, Contact Customer Service For Details
- Available With 1/8", 1/4" Vent Holes or No Vent
- Available Curved Upon Request
- Available in Aluminum (A), Copper (C), Galvanized Steel (GS), Bonderized (BN), Galvalume® (GVM), Stainless Steel (SS) or Zinc (Z)

Single pointed vent used a at soffit/wall condition where uneven surfaces (such as split-faced block) exist providing perimeter airflow into the soffit. Available non-vented for use as a decorative reveal upon request.

Most Common Sizes

X Sizes: 3/8", 1/2", 5/8", 3/4", 7/8", 1" or 1 3/8"

Y Sizes: 3/4", 1", 1 1/2", 2", 2 1/2", 3", 3 1/2", 4", 4 1/2", 5", 5 1/2" or 6"

Length: 120"

Materials And Finishes:

Details: stpro.us/MET

Aluminum (A), Copper (C), Galvanized Steel (GS), Bonderized (BN), Galvalume® (GVM), Stainless Steel (SS) or Zinc (Z)

ASTM Codes:

Details: stpro.us/ASTM

653-CS, A1018, A262, A36, A513, A653, A792, A924, B 370-12, B-209, B-209, B6/B69, C1047, C1063, C841, ML/SFA 920

Most Common Part Numbers:

SPS034V200 SPS: X=3/4, 1/8 Vent, Y=2, GS, 10'

SPS034V200J SPS: X=3/4, 1/4 Vent, Y=2, GS, 10'

SPS034V212J SPS: X=3/4, 1/4 Vent, Y=2 1/2, GS, 10'

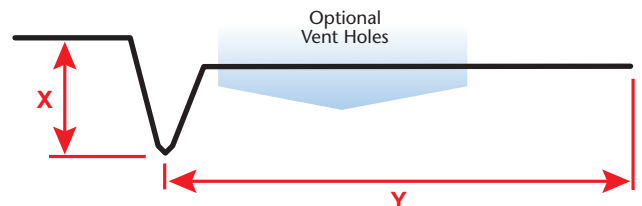
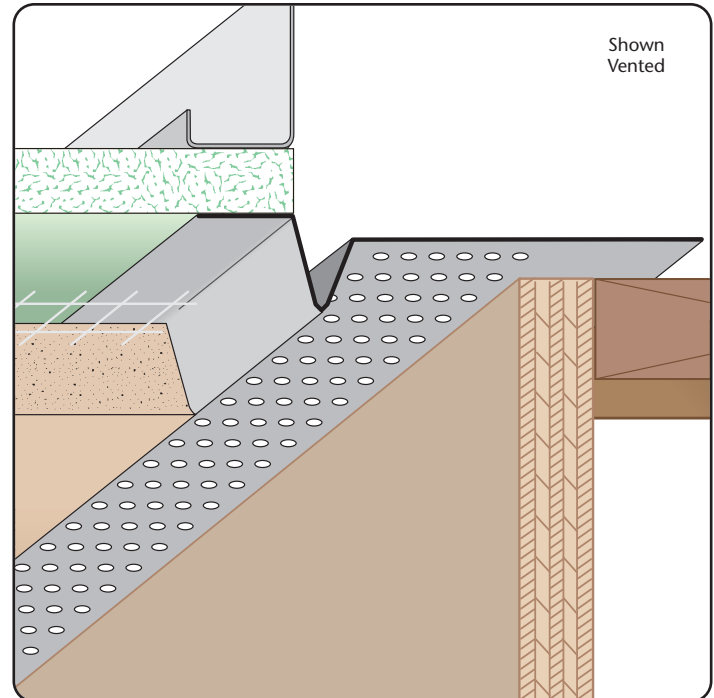
SPS034V300 SPS: X=3/4, 1/8 Vent, Y=3, GS, 10'

SPS034V300J SPS: X=3/4, 1/4 Vent, Y=3, GS, 10'

SPS034V312J SPS: X=3/4, 1/4 Vent, Y=3 1/2, GS, 10'

SPS078V112J SPS: X=7/8, 1/4 Vent, Y=1 1/2, GS, 10'

SPS078V200J SPS: X=7/8, 1/4 Vent, Y=2, GS, 10'



QUOTE

Company: _____
 Name: _____
 Address: _____
 City: _____
 State/ZIP: _____
 Phone: _____
 eMail: _____

QTY: _____
 Material/Gauge: _____
 X Size: _____
 Y Size: _____
 Length: _____
 Vent Holes: None 1/8" 1/4"

PO Number: _____
 Job/Project: _____
 Notes: _____

877-786-2587 • StocktonProducts.com

