



CUSTOM SIZES AVAILABLE!

Stockton Custom Fabrication

877-786-2587

custom@StocktonProducts.com



SRWS: #6 Solid Return Weep Screed

- Custom Sizes Available, Contact Customer Service For Details
- SUPERIOR® Moisture Protection
- Available Curved Upon Request
- Available in Aluminum (A), Copper (C), Galvanized Steel (GS), Bonderized (BN), Stainless Steel (SS) or Zinc (Z)

The #6 Solid Return Weep Screed in an angles drip screed that can be used at base of walls. It may also be used as a window or door head plaster stop and flashing piece.

Most Common Sizes

X Sizes: 1/2", 3/4", 7/8", 1" or 1 3/8"

Y Sizes: 3 1/2" or 5"

Z Sizes: 1/2", 3/4", 7/8", 1" or 1 3/8"

Length: 120"

Materials And Finishes:

Details: stpro.us/MET

Aluminum (A), Copper (C), Galvanized Steel (GS), Bonderized (BN), Stainless Steel (SS) or Zinc (Z)

ASTM Codes:

Details: stpro.us/ASTM

All Accessories are fabricated from prime galvanized steel G90 zinc coating by the hot dipped method, conforming to steel and coating specification ASTM A-653/A-653M or zinc alloy meeting ASTM B-69. Stainless Steel A480/A480M A580M (Stainless Steel) For installation and placement instructions refer to ASTM C1063, C841 and C926.

Most Common Part Numbers:

DHF034 312 034 DHF: X=3/4, Y=3 1/2, Z=3/4, GS, 10'

DHF034 312 034Z DHF: X=3/4, Y=3 1/2, Z=3/4, Z, 10'

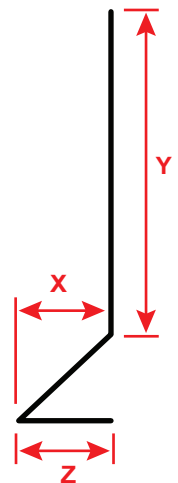
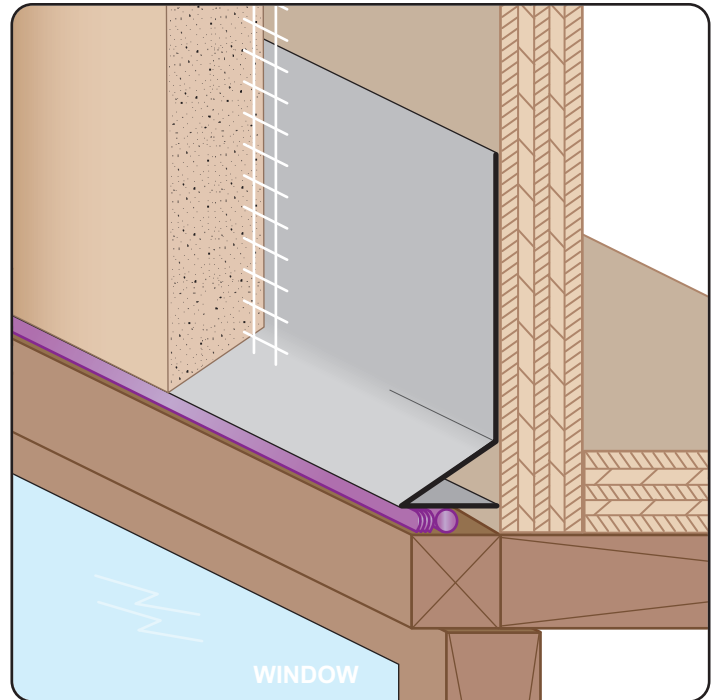
DHF078 312 038Z DHF: X=7/8, Y=3 1/2, Z=7/8, Z, 10'

DHF078 312 078 DHF: X=7/8, Y=3 1/2, Z=7/8, GS, 10'

DHF078 314 038Z DHF: X=7/8, Y=3 1/4, Z=3/8, Z, 10'

DHF078 314 038ZR DHF: X=7/8, Y=3 1/4, Z=3/8, Z, 10', Return

DHF118 312 118 DHF: X=1 1/8, Y=3 1/2, Z= 1 1/8, GS, 10'



QUOTE

Company: _____
 Name: _____
 Address: _____
 City: _____
 State/ZIP: _____
 Phone: _____
 eMail: _____

QTY: _____
 Material/Gauge: _____
 X Size: _____
 Y Size: _____
 Z Size: _____
 Length: _____

PO Number: _____
 Job/Project: _____
 Notes: _____

877-786-2587 • StocktonProducts.com

