



CUSTOM SIZES AVAILABLE!

Stockton Custom Fabrication

877-786-2587

custom@StocktonProducts.com



PRODUCTS™

SST: #36 Stucco Stop

- Custom Sizes Available, Contact Customer Service For Details
- SUPERIOR® Moisture Protection
- Available With 1/2" Weep Holes or No Weep Holes
- Available Curved Upon Request
- Available in Aluminum (A), Copper (C), Galvanized Steel (GS), Bonderized (BN), Galvalume® (GVM), Stainless Steel (SS) or Zinc (Z)

A variation of the traditional weep screed that provides a plaster stop and weep function at the foundation line.

Most Common Sizes

X Sizes: 1/2", 3/4", 7/8", 1" or 1 3/8"

Y Sizes: 3 1/2", 4 1/2" or 5"

Length: 120"

Materials And Finishes:

Details: stpro.us/MET

Aluminum (A), Copper (C), Galvanized Steel (GS), Bonderized (BN), Galvalume® (GVM), Stainless Steel (SS) or Zinc (Z)

ASTM Codes:

Details: stpro.us/ASTM

All Accessories are fabricated from prime galvanized steel G90 zinc coating by the hot dipped method, conforming to steel and coating specification ASTM A-653/A-653M or zinc alloy meeting ASTM B-69. Stainless Steel A480/A480M A580M (Stainless Steel) For installation and placement instructions refer to ASTM C1063, C841 and C926.

Most Common Part Numbers:

SST012W500J SST: X=1/2, 1/4 Weep Hole, Y=5, GS, 10'

SST034 312 SST: X=3/4, Y=3 1/2, GS, 10'

SST034W312L SST: X=3/4, 1/2 Weep Hole, Y=3 1/2, GS, 10'

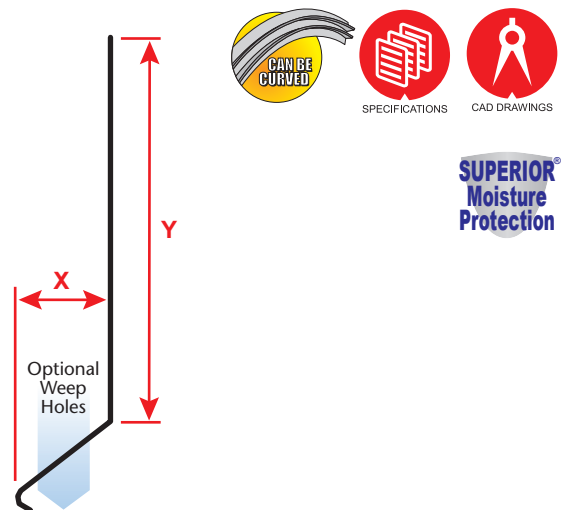
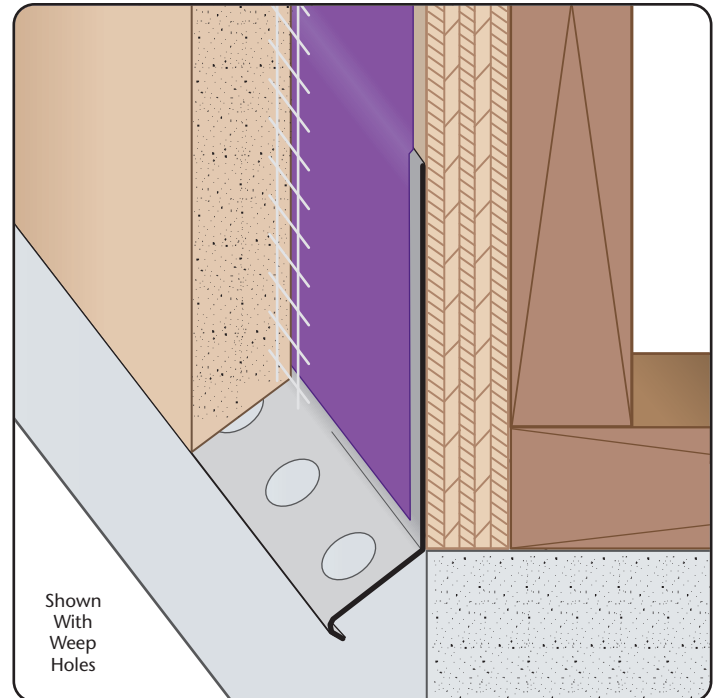
SST058W312J SST: X=5/8, 1/4 Weep Hole, Y=3 1/2, GS, 10'

SST078 312 SST: X=7/8, Y=3 1/2, GS, 10'

SST078W312L SST: X=7/8, 1/2 Weep Hole, Y=3 1/2, GS, 10'

SST078W312LC SST: X=7/8, 1/2 Weep Hole, Y=3 1/2, C, 10'

SST100W312L SST: X=1, 1/2 Weep Hole, Y=3 1/2, GS, 10'



QUOTE	Company: _____	QTY: _____	PO Number: _____
	Name: _____	Material/Gauge: _____	Job/Project: _____
	Address: _____	X Size: _____	Notes: _____
	City: _____	Y Size: _____	_____
	State/ZIP: _____	Length: _____	_____
	Phone: _____	Weep Holes: <input type="checkbox"/> None <input type="checkbox"/> 1/2"	_____
	eMail: _____		_____

877-786-2587 • StocktonProducts.com

