



**CUSTOM SIZES AVAILABLE!**

Stockton Custom Fabrication

877-786-2587

custom@StocktonProducts.com

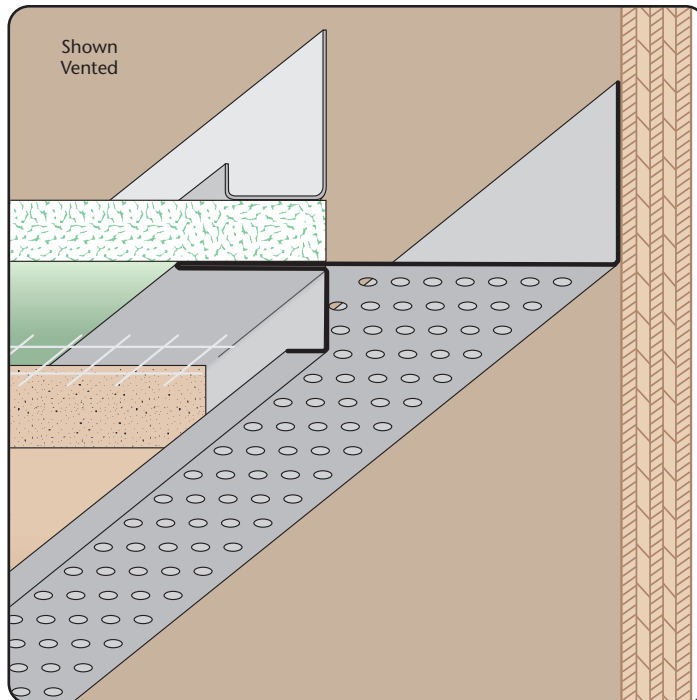


**PRODUCTS™**

# STM: Soffit Transition Mold

- Custom Sizes Available, Contact Customer Service For Details
- Available With 1/8", 1/4" Vent Holes or No Vent
- Available Curved Upon Request
- Available in Aluminum (A), Copper (C), Galvanized Steel (GS), Bonderized (BN), Galvalume® (GVM), Stainless Steel (SS) or Zinc (Z)

Provides a decorative transition between ceiling/wall with return keys for screeding of plaster. Can be vented for perimeter airflow into space above.



### Most Common Sizes

**X Sizes:** 1/2", 5/8", 3/4", 7/8", 1" or 1 3/8"

**Y Sizes:** 3/4", 1", 1 1/2", 2", 2 1/2", 3", 3 1/2" or 4"

**Length:** 120"

### Materials And Finishes:

Details: [stpro.us/MET](http://stpro.us/MET)

Aluminum (A), Copper (C), Galvanized Steel (GS), Bonderized (BN), Galvalume® (GVM), Stainless Steel (SS) or Zinc (Z)

### ASTM Codes:

Details: [stpro.us/ASTM](http://stpro.us/ASTM)

653-CS, A1018, A262, A36, A513, A653, A792, A924, B 370-12, B-209, B-209, B6/B69, C1047, C1063, C841, ML/SFA 920

### Most Common Part Numbers:

**STM012V212** STM: X=1/2, 1/8 Vent, Y=2 1/2, GS, 10'

**STM034V100SS** STM: X=3/4, 1/8 Vent, Y=1, SS, 10'

**STM034V112** STM: X=3/4, 1/8 Vent, Y=1 1/2, GS, 10'

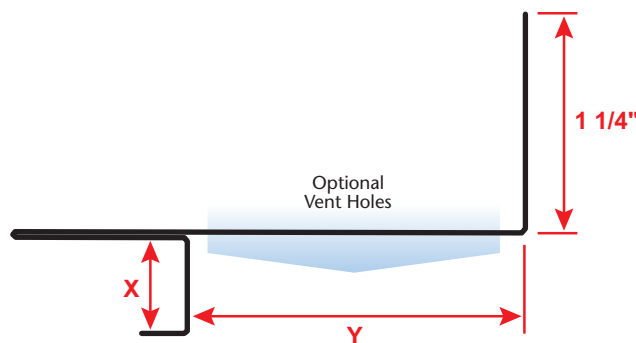
**STM058V112JA** STM: X=5/8, 1/4 Vent, Y=1 1/2, A, 10'

**STM078V200** STM: X=7/8, 1/8 Vent, Y=2, GS, 10'

**STM078V300J** STM: X=7/8, 1/4 Vent, Y=3, GS, 10'

**STM078V400** STM: X=7/8, 1/8 Vent, Y=4, GS, 10'

**STM516V200** STM: X=5/16, 1/8 Vent, Y=2, GS, 10'



<b>QUOTE</b>	Company: _____	QTY: _____	PO Number: _____
	Name: _____	Material/Gauge: _____	Job/Project: _____
	Address: _____	X Size: _____	Notes: _____
	City: _____	Y Size: _____	_____
	State/ZIP: _____	Length: _____	_____
	Phone: _____	Vent Holes: <input type="checkbox"/> None <input type="checkbox"/> 1/8" <input type="checkbox"/> 1/4"	_____
	eMail: _____		_____

**877-786-2587 • StocktonProducts.com**

