



**CUSTOM SIZES AVAILABLE!**

Stockton Custom Fabrication

877-786-2587

custom@StocktonProducts.com



**PRODUCTS™**

# TWM: T Water-Resistant Molding

- Custom Sizes Available, Contact Customer Service For Details
- Superior™ Moisture Protection
- SolidGround® Design For Moisture Protection
- Available in Aluminum (A), Copper (C), Galvanized Steel (GS), Bonderized (BN), Galvalume® (GVM), Stainless Steel (SS) or Zinc (Z)

One-piece SolidGround® design feature mitigates the concern of moisture penetration in a horizontal condition. Provides a plaster stop for top of wall/parapet conditions. SolidGround® design prevents moisture penetration at the top of the wall.

### Most Common Sizes

**X Sizes:** 1/2", 3/4", 7/8", 1", 1 1/4", 1 3/8" or 1 1/2"

**Y Sizes:** 3/4", 1", 1 1/2", 2", 2 1/2" or 3"

**Z Sizes:** 3/4", 1", 1 1/2", 2", 2 1/2" or 3"

**Length:** 120"

### Materials And Finishes:

Details: [stpro.us/MET](http://stpro.us/MET)

Aluminum (A), Copper (C), Galvanized Steel (GS), Bonderized (BN), Galvalume® (GVM), Stainless Steel (SS) or Zinc (Z)

### ASTM Codes:

Details: [stpro.us/ASTM](http://stpro.us/ASTM)

All Accessories are fabricated from prime galvanized steel G90 zinc coating by the hot dipped method, conforming to steel and coating specification ASTM A-653/A-653M or zinc alloy meeting ASTM B-69. Stainless Steel A480/A480M A580M (Stainless Steel) For installation and placement instructions refer to ASTM C1063, C841 and C926.

### Most Common Part Numbers:

**TWM034 238 300** TWM: X=3/4, Y=2 3/8, Z=3, GS, 10'

**TWM034 300 200** TWM: X=3/4, Y=3, Z=2, GS, 10'

**TWM078 112 112** TWM: X=7/8, Y=1 1/2, Z=1 1/2, GS, 10'

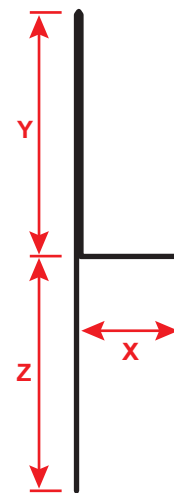
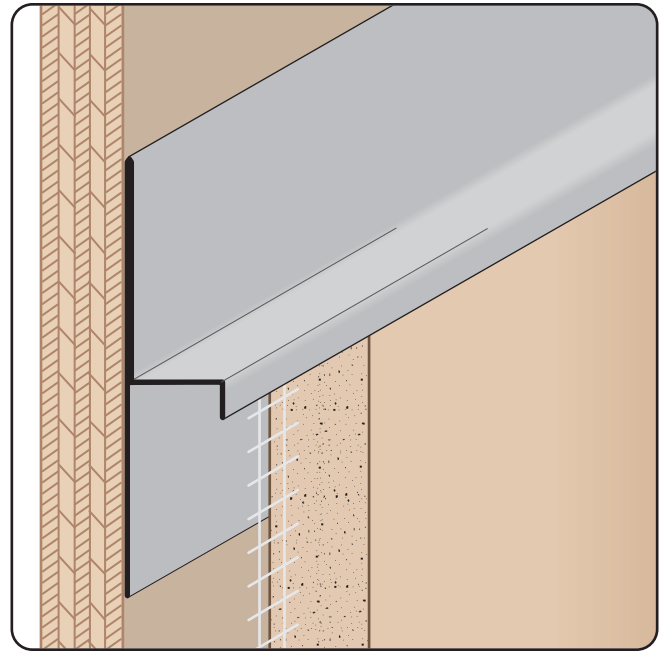
**TWM078 112 112SS** TWM: X=7/8, Y=1 1/2, Z=1 1/2, SS, 10'

**TWM078 200 112** TWM: X=7/8, Y=2, Z=1 1/2, GS, 10'

**TWM100 112 112** TWM: X=1, Y=1 1/2, Z=1 1/2, GS, 10'

**TWM100 200 212** TWM: X=1, Y=2, Z=2 1/2, GS, 10'

**TWM100 200 300** TWM: X=1, Y=2, Z=3, GS, 10'



**QUOTE**

Company: \_\_\_\_\_  
 Name: \_\_\_\_\_  
 Address: \_\_\_\_\_  
 City: \_\_\_\_\_  
 State/ZIP: \_\_\_\_\_  
 Phone: \_\_\_\_\_  
 eMail: \_\_\_\_\_

QTY: \_\_\_\_\_  
 Material/Gauge: \_\_\_\_\_  
 X Size: \_\_\_\_\_  
 Y Size: \_\_\_\_\_  
 Z Size: \_\_\_\_\_  
 Length: \_\_\_\_\_

PO Number: \_\_\_\_\_  
 Job/Project: \_\_\_\_\_  
 Notes: \_\_\_\_\_  
 \_\_\_\_\_  
 \_\_\_\_\_

**877-786-2587 • StocktonProducts.com**

