



**CUSTOM SIZES AVAILABLE!**

Stockton Custom Fabrication

877-786-2587

custom@StocktonProducts.com



**PRODUCTS™**

## W-S: #7 Weep Screed

- Custom Sizes Available, Contact Customer Service For Details
- SUPERIOR® Moisture Protection
- Available With 1/2" Weep Holes or No Holes
- Available Curved Upon Request
- Available in Aluminum (A), Copper (C), Galvanized Steel (GS), Bonderized (BN), Galvalume® (GVM), Stainless Steel (SS) or Zinc (Z)

A traditional weep screed that provides a plaster stop and functions as a weep screed at the foundation. Available with and without weep holes.

### Most Common Sizes

**X Sizes:** 1/2", 3/4", 7/8", 1", 1 1/4", 1 3/8" or 1 1/2"

**Y Sizes:** 3 1/2", 4 1/2" or 5"

**Length:** 120"

### Materials And Finishes:

Details: [stpro.us/MET](http://stpro.us/MET)

Aluminum (A), Copper (C), Galvanized Steel (GS), Bonderized (BN), Galvalume® (GVM), Stainless Steel (SS) or Zinc (Z)

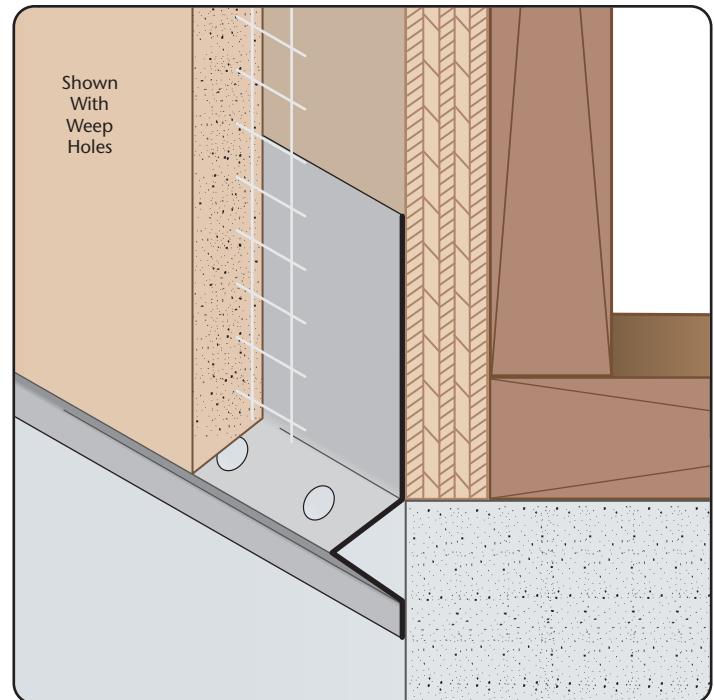
### ASTM Codes:

Details: [stpro.us/ASTM](http://stpro.us/ASTM)

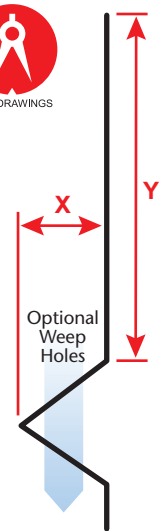
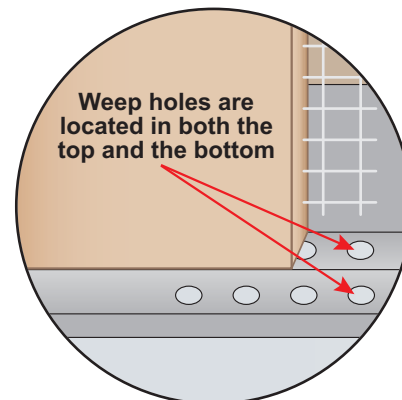
All Accessories are fabricated from prime galvanized steel G90 zinc coating by the hot dipped method, conforming to steel and coating specification ASTM A-653/A-653M or zinc alloy meeting ASTM B-69. Stainless Steel A480/A480M A580M (Stainless Steel) For installation and placement instructions refer to ASTM C1063, C841 and C926.

### Most Common Part Numbers:

|                      |   |
|----------------------|---|
| <b>W S034 312</b>    | W-S: X=3/4, Y=3 1/2, GS, 10'              |
| <b>W S034W312LA</b>  | W-S: X=3/4, 1/2 Weep, Y=3 1/2, A, 10'     |
| <b>W S078 312</b>    | W-S: X=7/8, Y=3 1/2, GS, 10'              |
| <b>W S078W312L</b>   | W-S: X=7/8, 1/2 Weep, Y=3 1/2, GS, 10'    |
| <b>W S138W312</b>    | W-S: X=1 3/8, 1/8 Weep, Y=3 1/2, GS, 10'  |
| <b>W S138W312J</b>   | W-S: X=7/8, 1/4 Weep, Y=3 1/2, Z, 10'     |
| <b>W S158W312L</b>   | W-S: X= 1 5/8, 1/2 Weep, Y=3 1/2, GS, 10' |
| <b>W S200W312LSS</b> | W-S: X= 2, 1/2 Weep, Y=3 1/2, SS, 10'     |



**SUPERIOR®**  
Moisture  
Protection



|              |                  |   |                    |
|--------------|------------------|---|--------------------|
| <b>QUOTE</b> | Company: _____   | QTY: _____  | PO Number: _____   |
|              | Name: _____      | Material/Gauge: _____   | Job/Project: _____ |
|              | Address: _____   | X Size: _____   | Notes: _____       |
|              | City: _____      | Y Size: _____   | _____              |
|              | State/ZIP: _____ | Length: _____   | _____              |
|              | Phone: _____     | Weep Holes: <input type="checkbox"/> None <input type="checkbox"/> 1/2" | _____              |
|              | eMail: _____     |   | _____              |

**877-786-2587 • StocktonProducts.com**

