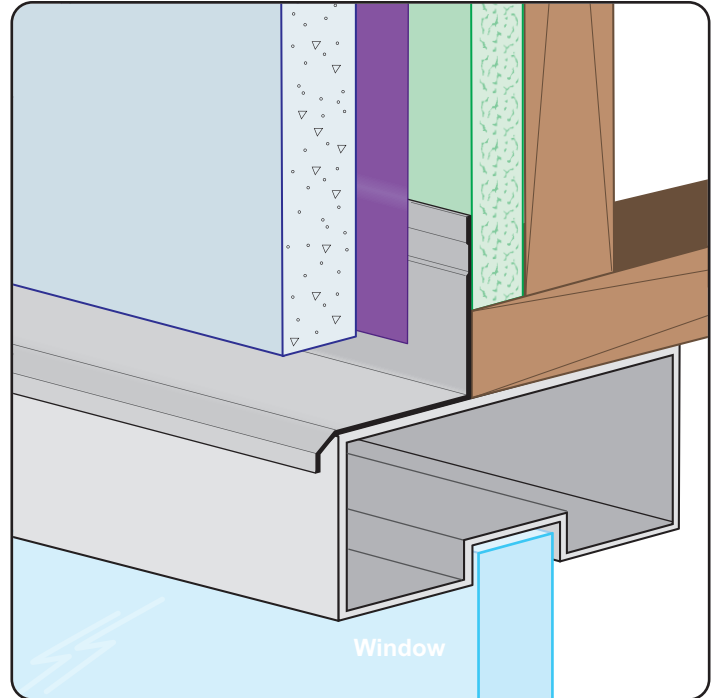


WHD-FCP: Window Head Drip for Fiber Cement Panel

- Available in Aluminum Alloy (6063 T-5)
- A multi-use drip molding that can be used at window and door heads, as well as at the foundation.
- Note:** Attach panel per manufacturer's recommended installation instructions.



Most Common Sizes

Length: 10'

Materials And Finishes:

Details: stpro.us/EXT

Aluminum Alloy (6063 T-5)

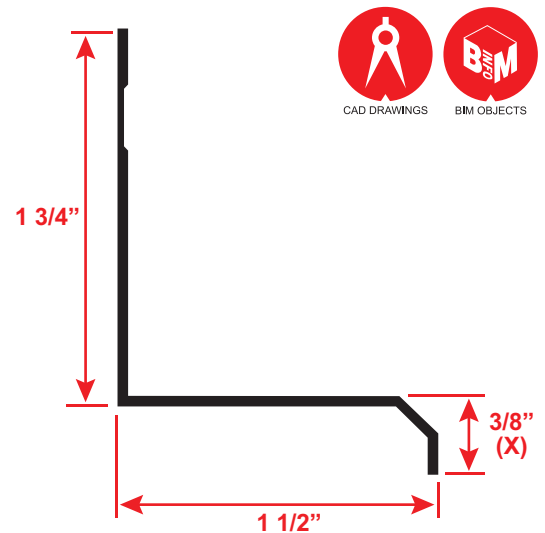
ASTM Codes:

Details: stpro.us/ASTM

AA-M32-C10A21, AAMA 605.2, C841, C1047, C1063, B136-84, B244-97, D4214-98, ND1730-67-TYPE B

Most Common Part Numbers:

WHD FCP150 375E	WHD-FCP: X=3/8, Mill Finish, A, 10'
WHD FCP150 375EC	WHD-FCP: X=3/8, Clear Anodize, AL, 10'
WHD FCP150 375EDB	WHD-FCP: X=3/8, Dark Bronze, AL, 10'
WHD FCP150 375EP	WHD-FCP: X=3/8, Powder Coated, AL, 10'



QUOTE	Company: _____	QTY: _____	PO Number: _____
	Name: _____	Material: Aluminum Alloy (6063 T-5)	Job/Project: _____
	Address: _____	Length: _____	Notes: _____
	City: _____		_____
	State/ZIP: _____		_____
	Phone: _____		_____
	eMail: _____		_____

877-786-2587 • StocktonProducts.com

