



CUSTOM SIZES AVAILABLE!

Stockton Custom Fabrication

877-786-2587

custom@StocktonProducts.com



PRODUCTS™

WTP: Window Termination Point

- Custom Sizes Available, Contact Customer Service For Details
- SUPERIOR® Moisture Protection
- Available Curved Upon Request
- Available in Aluminum (A), Copper (C), Galvanized Steel (GS), Bonderized (BN), Galvalume® (GVM), Stainless Steel (SS) or Zinc (Z)

Provides a termination/drip edge above exterior door and window heads.

Most Common Sizes

X Sizes: 1/4", 1/2", 5/8", 3/4", 7/8", 1" or 1 3/8"

Y Sizes: 2", 2 1/2", 3" or 4"

Length: 120"

Materials And Finishes:

Details: stpro.us/MET

Aluminum (A), Copper (C), Galvanized Steel (GS), Bonderized (BN), Galvalume® (GVM), Stainless Steel (SS) or Zinc (Z)

ASTM Codes:

Details: stpro.us/ASTM

All Accessories are fabricated from prime galvanized steel G90 zinc coating by the hot dipped method, conforming to steel and coating specification ASTM A-653/A-653M or zinc alloy meeting ASTM B-69. Stainless Steel A480/A480M A580M (Stainless Steel) For installation and placement instructions refer to ASTM C1063, C841 and C926.

Most Common Part Numbers:

WTP014 300A WTP: X=1/4, Y=3 1/2, A, 10'

WTP034 200 WTP: X=3/4, Y=2, GS, 10'

WTP034 312 WTP: X=3/4, Y=3 1/2, GS, 10'

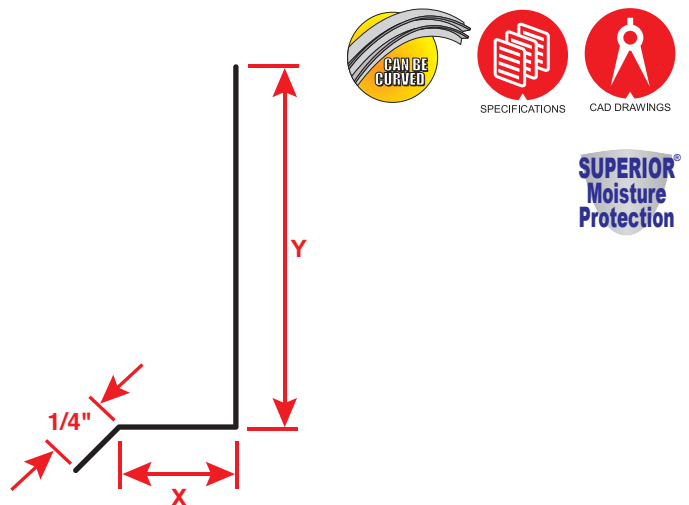
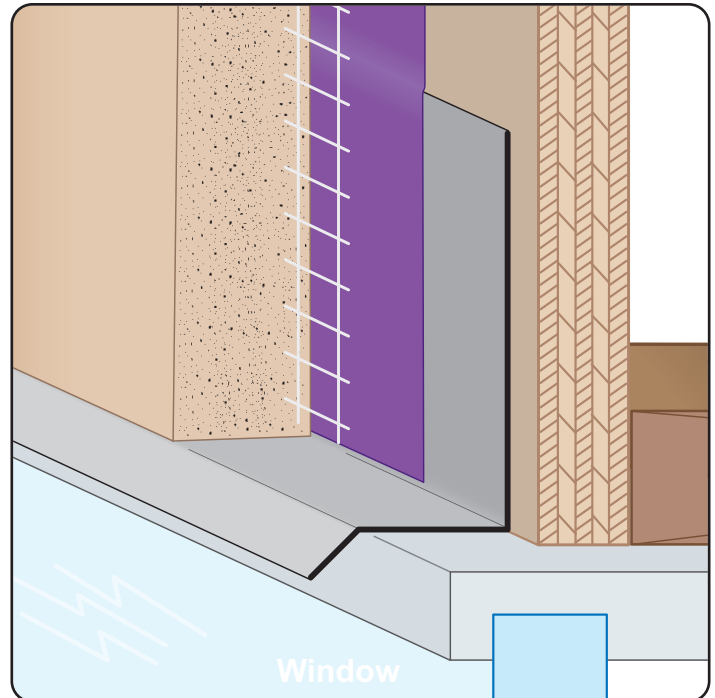
WTP078 200 WTP: X=7/8, Y=2, GS, 10'

WTP078 300 WTP: X=7/8, Y=3, GS, 10'

WTP078 312 WTP: X=7/8, Y=3 1/2, GS, 10'

WTP078 400 WTP: X=7/8, Y=4, GS, 10'

WTP138 300 WTP: X=1 3/8, Y=3, GS, 10'



QUOTE	Company: _____	QTY: _____	PO Number: _____
	Name: _____	Material/Gauge: _____	Job/Project: _____
	Address: _____	X Size: _____	Notes: _____
	City: _____	Y Size: _____	_____
	State/ZIP: _____	Length: _____	_____
	Phone: _____		_____
	eMail: _____		_____

877-786-2587 • StocktonProducts.com

