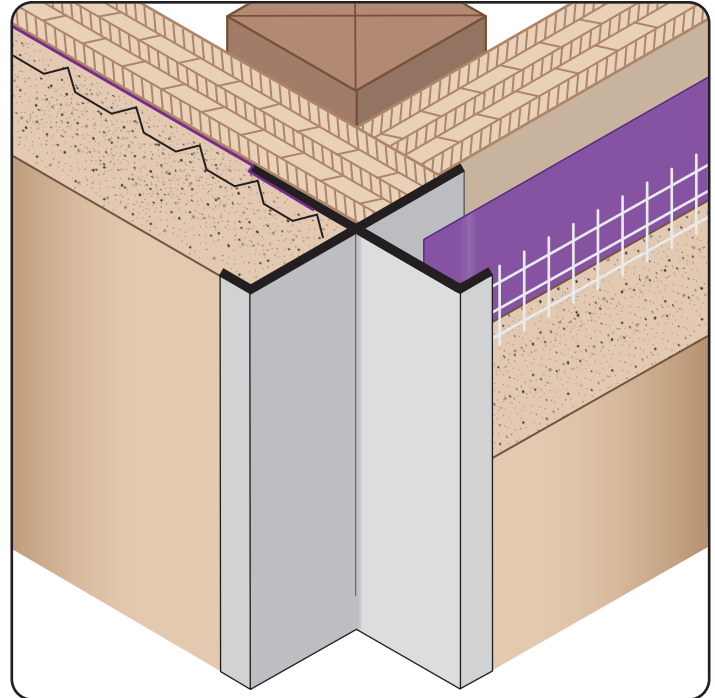


# XPM: X Plaster Molding

- Available Curved Upon Request
- Available in Aluminum Alloy (6063 T-5)

Creates a decorative inverted corner reveal detail for conventional 3-coat stucco at fascia/soffit conditions and around recessed entryways and doors. Can also be used to trim off the tops of pony walls and used as a drip edge on a fascia/soffit condition.



## Most Common Sizes

Length: 10'



### Materials And Finishes:

Details: [stpro.us/EXT](http://stpro.us/EXT)

Aluminum Alloy (6063 T-5)

### ASTM Codes:

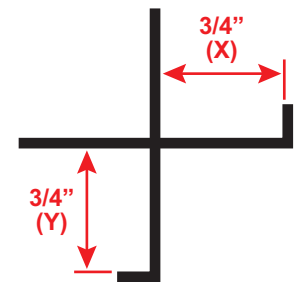
Details: [stpro.us/ASTM](http://stpro.us/ASTM)

AA-M32-C10A21, AAMA 605.2, C841, C1047, C1063, B136-84, B244-97, D4214-98, ND1730-67-TYPE B

### Most Common Part Numbers:

**XPM75 75EC** XPM: X=3/4, Y=3/4, Clear Anodize, A, 10'

**XPM75 75EDB** XPM: X=3/4, Y=3/4, Dark Bronze Anodize, AL, 10'



<b>QUOTE</b>	Company: _____	QTY: _____	PO Number: _____
	Name: _____	Material: Aluminum Alloy (6063 T-5)	Job/Project: _____
	Address: _____	Length: _____	Notes: _____
	City: _____		_____
	State/ZIP: _____		_____
	Phone: _____		_____
	eMail: _____		_____

**877-786-2587 • StocktonProducts.com**

