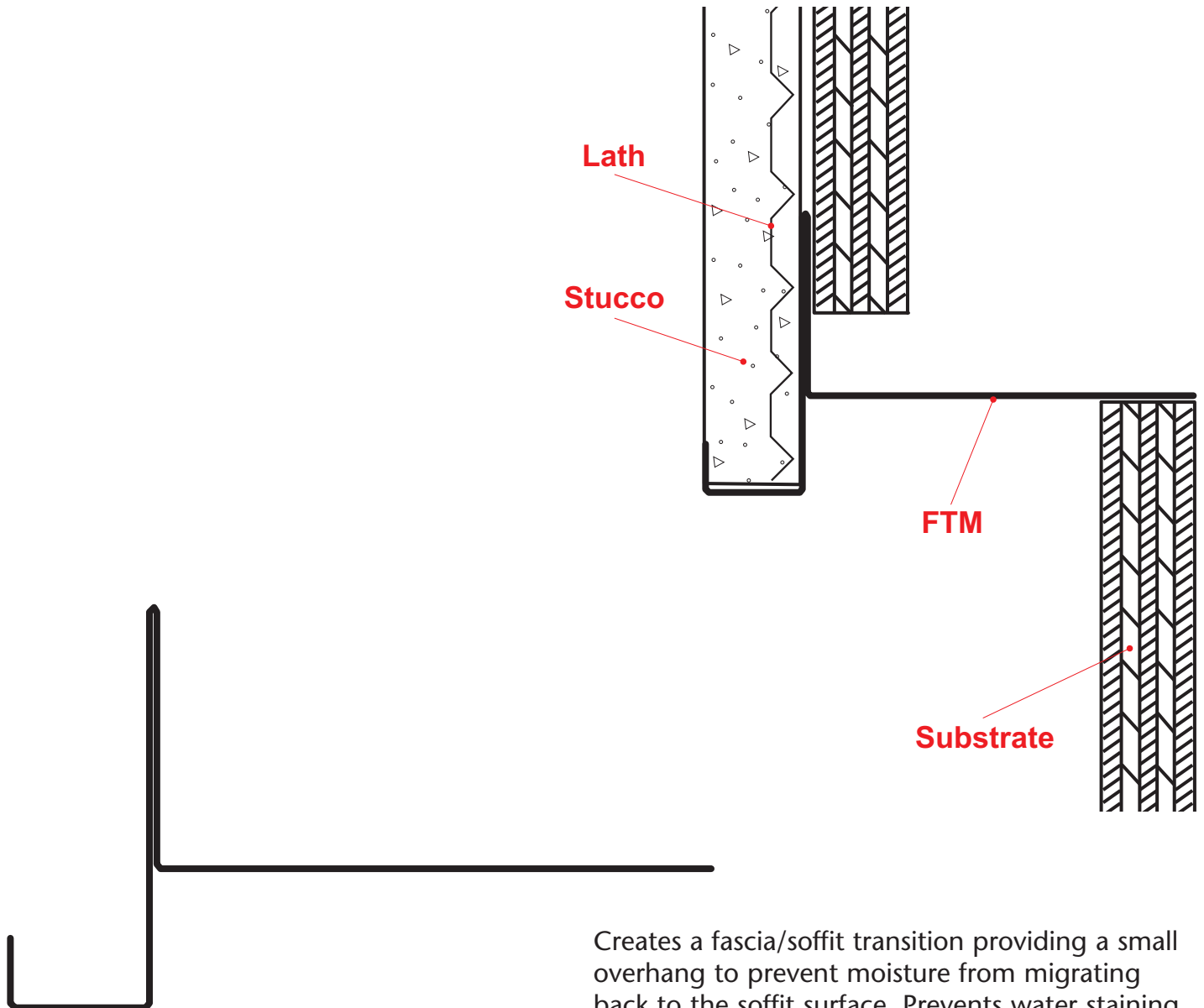


## FTM: Fascia Transition Mold



Creates a fascia/soffit transition providing a small overhang to prevent moisture from migrating back to the soffit surface. Prevents water staining on plaster by creating a drip edge. Can be vented for perimeter airflow into space above the soffit.

**Note:** This drawing is supplied solely to assist in the selection and application of product manufactured by Stockton Products. This drawing is generic in nature and should not be used in design or construction without an independent evaluation by a qualified Architect or Engineer of Record.

©2021 Stockton Products. All rights reserved worldwide. Product illustrations are for reference only. Rev 113021  
CALIFORNIA RESIDENTS: Please review our Prop 65 statement at [stpro.us/P65](http://stpro.us/P65) or visit [www.P65Warnings.ca.gov](http://www.P65Warnings.ca.gov)