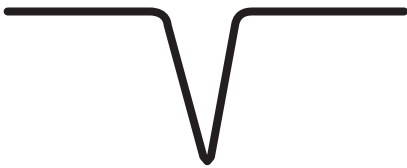
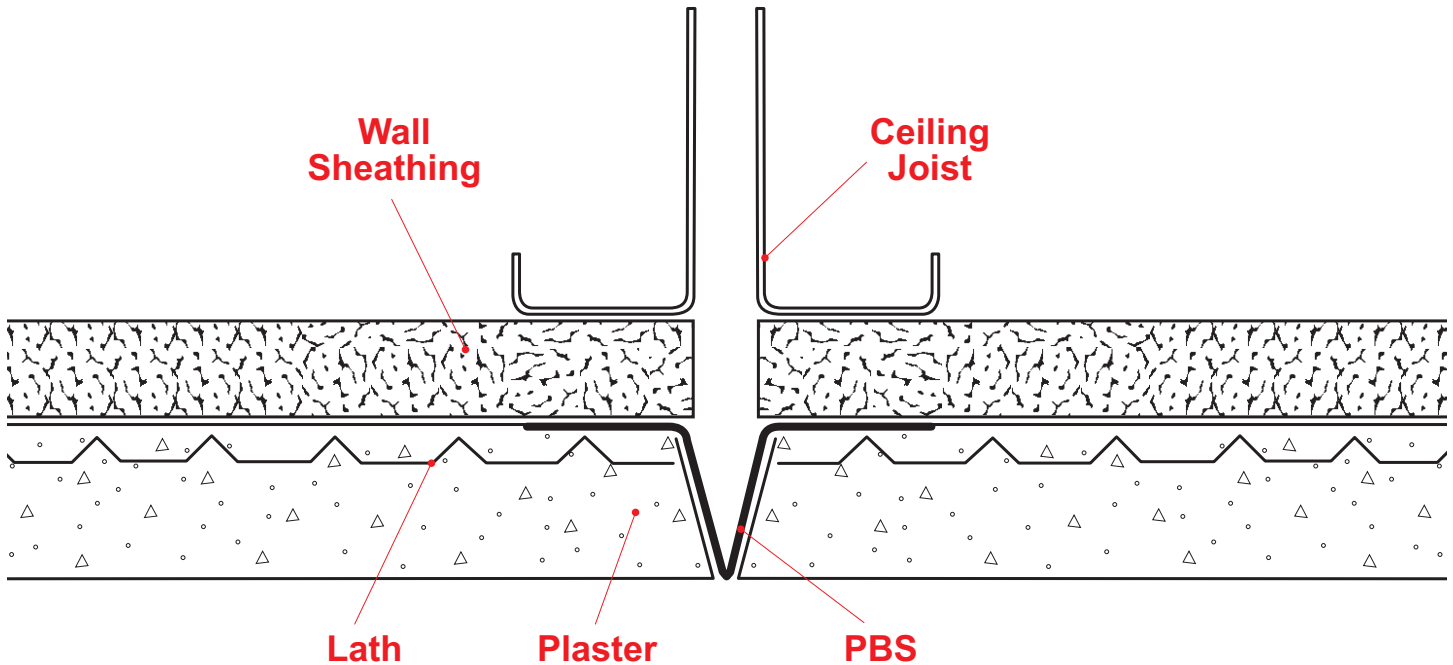


## PBS: Pointed Base Screed



Pointed base screed functions as a control joint and depth screed in the plaster. The base screed comes with or without 1/2" key holes in the flange for a mechanical key.

**Note:** This drawing is supplied solely to assist in the selection and application of product manufactured by Stockton Products. This drawing is generic in nature and should not be used in design or construction without an independent evaluation by a qualified Architect or Engineer of Record.

©2021 Stockton Products. All rights reserved worldwide. Product illustrations are for reference only. Rev 113021  
CALIFORNIA RESIDENTS: Please review our Prop 65 statement at [stpro.us/P65](http://stpro.us/P65) or visit [www.P65Warnings.ca.gov](http://www.P65Warnings.ca.gov)