



**CUSTOM SIZES AVAILABLE!**

Stockton Custom Fabrication  
(877) 786-2587  
custom@stocktonproducts.com



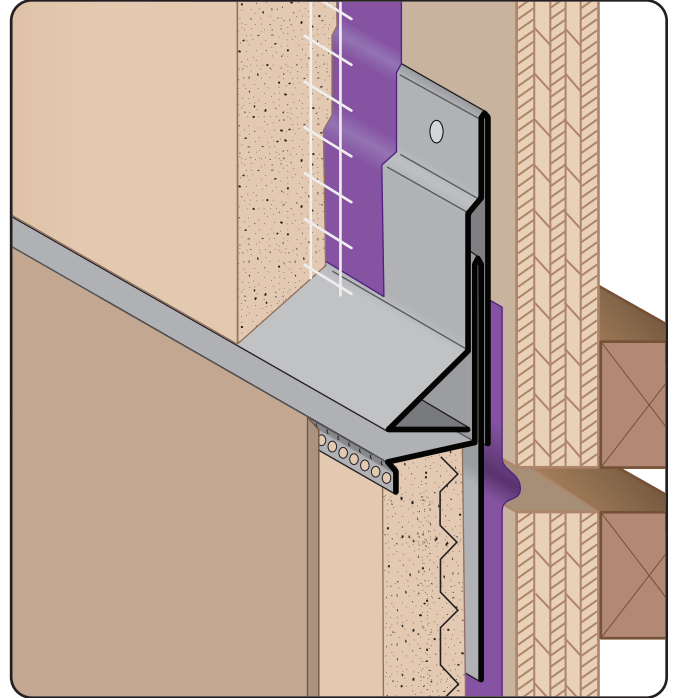
## MFR: Finish-Rite® M-Slide Expansion Joint® - 2 Piece

- Custom Sizes Available, Contact Customer Service For Details
- SUPERIOR® Moisture Protection
- Available With Weep Holes, Weep Slots or No Weep
- Available in Aluminum (A), Copper (C), Galvanized Steel (GS), Bonderized (BN), Galvalume® (GVM), Stainless Steel (SS) or Zinc (Z)

The dual function self-aligning expansion joint provides movement capability at floor line while allowing moisture to release from the top ground and lock out moisture from the bottom. Special "Step" on the attachment leg provides a locator for correct placement of the fasteners and helps keep the molding laying flat on the wall.

Provides 1" of vertical movement.

US Patent 7,673,421 B2



### Most Common Part Numbers:

**W Sizes:** 1/8" or 3/16"

**X Sizes:** 5/8", 3/4", 7/8", 1 3/8" or 1 1/2"

**Y Sizes:** 2 1/2", 3" or 3 1/2"

**Z Sizes:** 2 1/2", 3" or 3 1/2"

**Length:** 120"



**SUPERIOR  
Moisture  
Protection**



### Materials And Finishes:

Details: [stpro.us/MET](http://stpro.us/MET)

Aluminum (A), Copper (C), Galvanized Steel (GS), Bonderized (BN), Galvalume® (GVM), Stainless Steel (SS) or Zinc (Z)

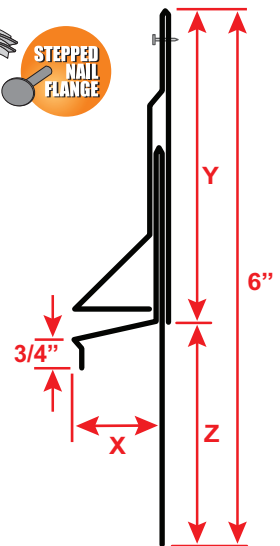
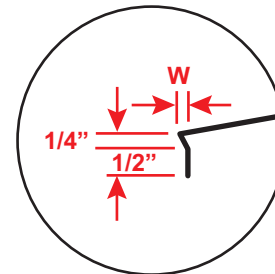
### ASTM Codes:

Details: [stpro.us/ASTM](http://stpro.us/ASTM)

All Accessories are fabricated from prime galvanized steel C90 zinc coating by the hot dipped method, conforming to steel and coating specification ASTM

A-653/A-653M or zinc alloy meeting ASTM B-69. Stainless Steel A480/A480M A580M (Stainless Steel)

For installation and placement instructions refer to ASTM C1063, C841 and C926.



**QUOTE**

Company: \_\_\_\_\_  
Name: \_\_\_\_\_  
Address: \_\_\_\_\_  
City: \_\_\_\_\_  
State/ZIP: \_\_\_\_\_  
Phone: \_\_\_\_\_  
eMail: \_\_\_\_\_

QTY: \_\_\_\_\_  
Material/Gauge: \_\_\_\_\_  
W Size: \_\_\_\_\_  
X Size: \_\_\_\_\_  
Y Size: \_\_\_\_\_  
Z Size: \_\_\_\_\_  
Length: \_\_\_\_\_

Weep Holes: ☐ None ☐ 1/4" ☐ 1/2"  
Weep Slots: ☐ None ☐ 3/16 x 2"  
PO Number: \_\_\_\_\_  
Job/Project: \_\_\_\_\_  
Notes: \_\_\_\_\_

**877-786-2587 • StocktonProducts.com**

