



**CUSTOM SIZES AVAILABLE!**

Stockton Custom Fabrication

877-786-2587

custom@StocktonProducts.com



## SRWS: #6 Solid Return Weep Screed

- Custom Sizes Available, Contact Customer Service For Details
- SUPERIOR® Moisture Protection
- Available Curved Upon Request
- Available in Aluminum (A), Copper (C), Galvanized Steel (GS), Bonderized (BN), Stainless Steel (SS) or Zinc (Z)

The #6 Solid Return Weep Screed in an angles drip screed that can be used at base of walls. It may also be used as a window or door head plaster stop and flashing piece.

### Most Common Sizes

**X Sizes:** 1/2", 3/4", 7/8", 1" or 1 3/8"

**Y Sizes:** 3 1/2" or 5"

**Z Sizes:** 1/2", 3/4", 7/8", 1" or 1 3/8"

**Length:** 120"

### Materials And Finishes:

Details: [stpro.us/MET](http://stpro.us/MET)

Aluminum (A), Copper (C), Galvanized Steel (GS), Bonderized (BN), Stainless Steel (SS) or Zinc (Z)

### ASTM Codes:

Details: [stpro.us/ASTM](http://stpro.us/ASTM)

All Accessories are fabricated from prime galvanized steel G90 zinc coating by the hot dipped method, conforming to steel and coating specification ASTM A-653/A-653M or zinc alloy meeting ASTM B-69. Stainless Steel A480/A480M A580M (Stainless Steel) For installation and placement instructions refer to ASTM C1063, C841 and C926.

### Most Common Part Numbers:

**SRWS034 312 034** SRWS: X=3/4, Y=3 1/2, Z=3/4, GS, 10'

**SRWS034 312 034Z** SRWS: X=3/4, Y=3 1/2, Z=3/4, Z, 10'

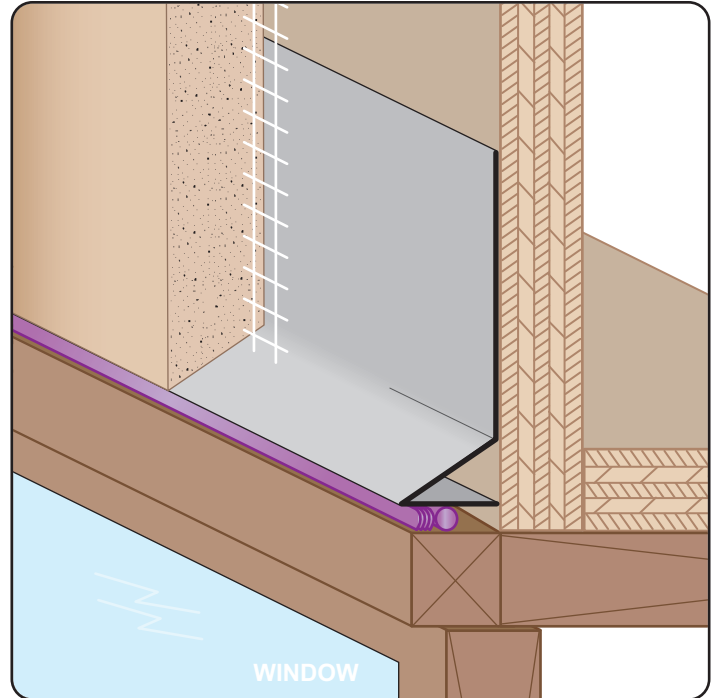
**SRWS078 312 038Z** SRWS: X=7/8, Y=3 1/2, Z=7/8, GS, 10'

**SRWS078 312 078** SRWS: X=7/8, Y=3 1/2, Z=7/8, GS, 10'

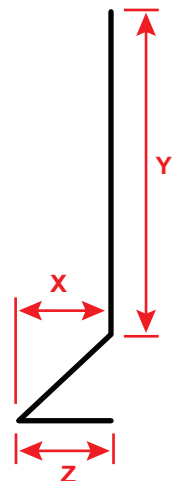
**SRWS078 314 038Z** SRWS: X=7/8, Y=3 1/4, Z=3/8, Z, 10'

**SRWS078 314 038ZR** SRWS: X=7/8, Y=3 1/4, Z=3/8, Z, 10', Return

**SRWS118 312 118** SRWS: X=1 1/8, Y=3 1/2, Z= 1 1/8, GS, 10'



**SUPERIOR®**  
Moisture  
Protection



**QUOTE**

Company: \_\_\_\_\_  
Name: \_\_\_\_\_  
Address: \_\_\_\_\_  
City: \_\_\_\_\_  
State/ZIP: \_\_\_\_\_  
Phone: \_\_\_\_\_  
eMail: \_\_\_\_\_

QTY: \_\_\_\_\_  
Material/Gauge: \_\_\_\_\_  
X Size: \_\_\_\_\_  
Y Size: \_\_\_\_\_  
Z Size: \_\_\_\_\_  
Length: \_\_\_\_\_

PO Number: \_\_\_\_\_  
Job/Project: \_\_\_\_\_  
Notes: \_\_\_\_\_  
\_\_\_\_\_  
\_\_\_\_\_  
\_\_\_\_\_

**877-786-2587 • StocktonProducts.com**

