



CUSTOM SIZES AVAILABLE!

Stockton Custom Fabrication

877-786-2587

custom@StocktonProducts.com



TWCB: Tru-Weep™ Casing Bead

- Custom Sizes Available, Contact Customer Service For Details
- Available in Aluminum (A), Copper (C), Galvanized Steel (GS), Bonderized (BN), Stainless Steel (SS) or Zinc (Z)

The Tru-Weep™ Casing Bead is a non-perforated customizable stucco casing bead. Whether the stucco assembly is utilizing a drainage mat, continuous insulation, or traditional 3-coat the Tru-Weep™ Casing Bead can be ordered in any ground size to accommodate the stucco assembly.

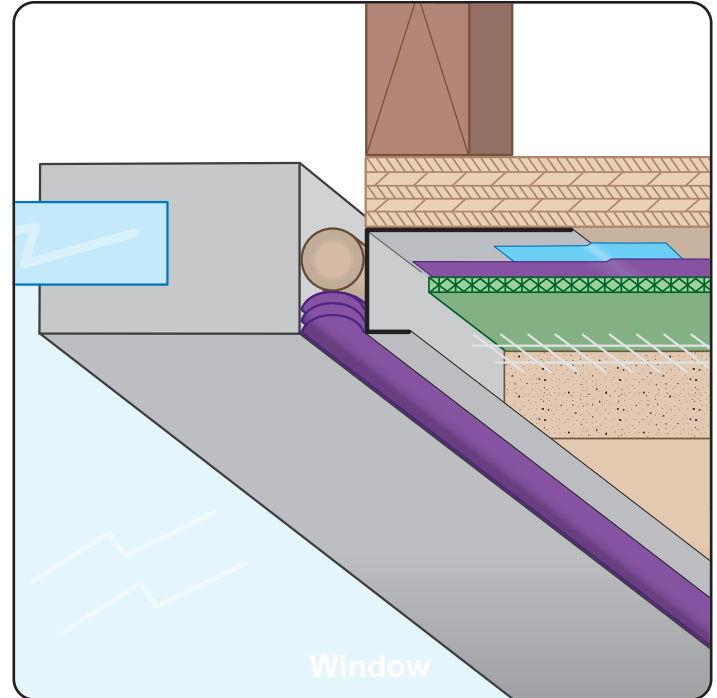
Most Common Sizes

X Sizes: 1", 1 1/8", 1 1/4", 1 1/2"

Y Sizes: 2", 2 1/2", 3", 3 1/2"

Z Sizes: 1/4", 1/2", 3/4", 1"

Length: 120"



Materials And Finishes:

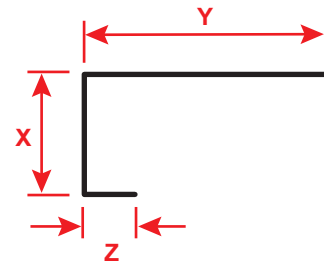
Details: stpro.us/MET

Aluminum (A), Copper (C), Galvanized Steel (GS), Bonderized (BN), Stainless Steel (SS) or Zinc (Z)

ASTM Codes:

Details: stpro.us/ASTM

All Accessories are fabricated from prime galvanized steel G90 zinc coating by the hot dipped method, conforming to steel and coating specification ASTM A-653/A-653M or zinc alloy meeting ASTM B-69. Stainless Steel A480/A480M A580M (Stainless Steel) For installation and placement instructions refer to ASTM C1063, C841 and C926.



QUOTE

Company: _____
Name: _____
Address: _____
City: _____
State/ZIP: _____
Phone: _____
eMail: _____

QTY: _____
Material/Gauge: _____
X Size: _____
Y Size: _____
Z Size: _____
Length: _____

PO Number: _____
Job/Project: _____
Notes: _____

877-786-2587 • StocktonProducts.com

