



**CUSTOM SIZES AVAILABLE!**

Stockton Custom Fabrication

877-786-2587

custom@StocktonProducts.com

**Stockton**

**PRODUCTS®**

## TWHJ-CI: Tru-Weep™ #9 Horizontal Control Joint

- Custom Sizes Available, Contact Customer Service For Details
- Complies With IBC 2021 Drainage Mat Requirement For Stucco Systems
- Included 3/16 x 2" Weep Slots
- Available in Aluminum (A), Copper (C), Galvanized Steel (GS), Bonderized (BN), Stainless Steel (SS) or Zinc (Z)

The Tru-Weep™ Stucco Accessories are a series of counter flashing stucco screeds specifically designed to be used with drainage mats and (CI) continuous insulation. Weep slots are located along the back of the sloped leg in alignment with the drainage mat to allow water to exit the stucco assembly efficiently.

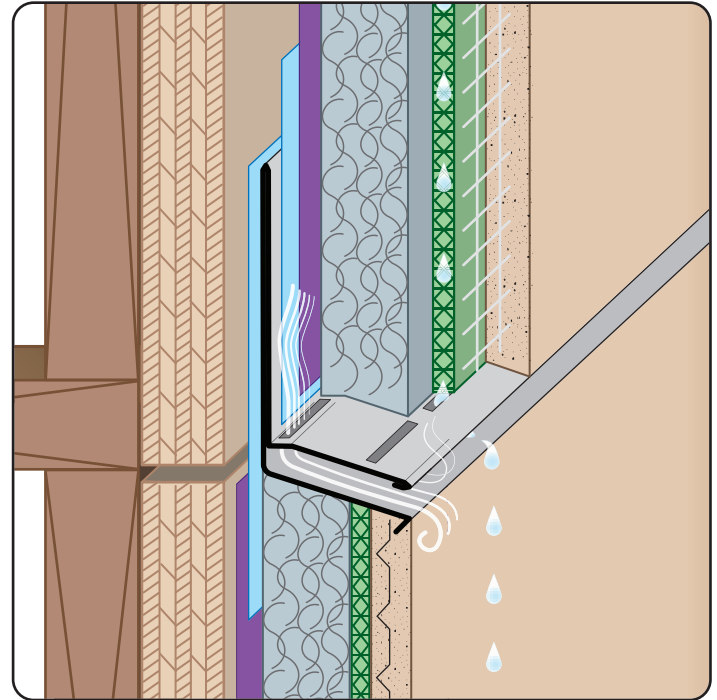
### Most Common Sizes

**X Sizes:** 1", 1 1/8", 1 1/4", 1 1/2"

**Y Sizes:** User Defined

**Z Sizes:** User Defined

**Length:** 120"



### Materials And Finishes:

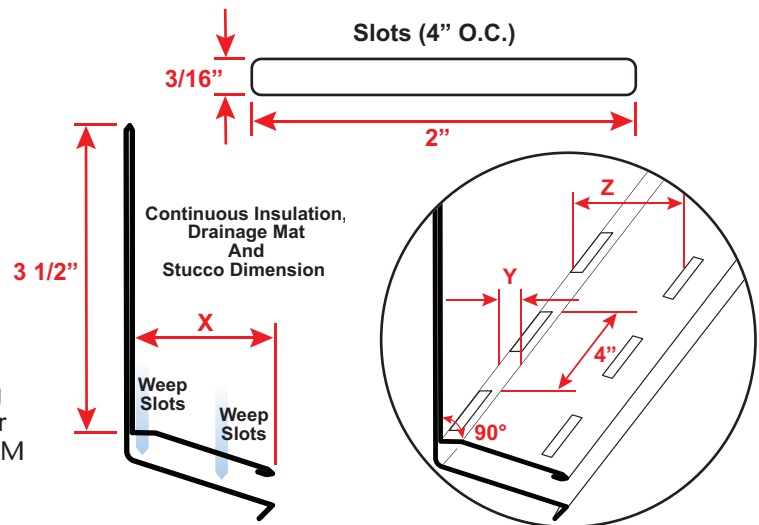
Details: [stpro.us/MET](http://stpro.us/MET)

Aluminum (A), Copper (C), Galvanized Steel (GS), Bonderized (BN), Stainless Steel (SS) or Zinc (Z)

### ASTM Codes:

Details: [stpro.us/ASTM](http://stpro.us/ASTM)

All Accessories are fabricated from prime galvanized steel G90 zinc coating by the hot dipped method, conforming to steel and coating specification ASTM A-653/A-653M or zinc alloy meeting ASTM B-69. Stainless Steel A480/A480M A580M (Stainless Steel) For installation and placement instructions refer to ASTM C1063, C841 and C926.



**QUOTE**

Company: \_\_\_\_\_  
Name: \_\_\_\_\_  
Address: \_\_\_\_\_  
City: \_\_\_\_\_  
State/ZIP: \_\_\_\_\_  
Phone: \_\_\_\_\_  
eMail: \_\_\_\_\_

QTY: \_\_\_\_\_  
Material/Gauge: \_\_\_\_\_  
X Size: \_\_\_\_\_  
Y Size: \_\_\_\_\_  
Z Size: \_\_\_\_\_  
Length: \_\_\_\_\_

PO Number: \_\_\_\_\_  
Job/Project: \_\_\_\_\_  
Notes: \_\_\_\_\_  
\_\_\_\_\_  
\_\_\_\_\_

**877-786-2587 • StocktonProducts.com**

