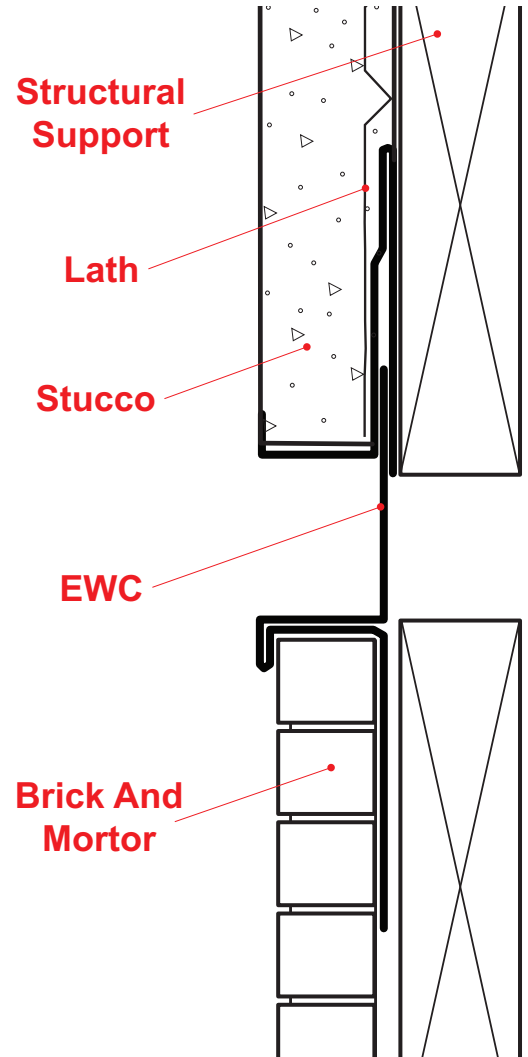
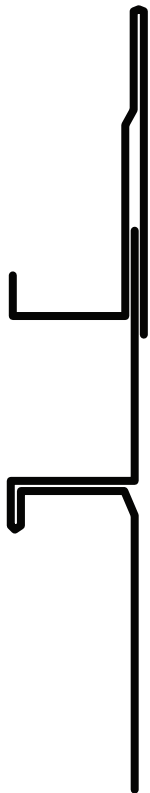


## EWC: #40 Expansion Water-Resistant Channel - 2 Piece



The unique hem design stops moisture penetration in a horizontal condition. The two-piece design allows for movement. Special "Step" on the attachment leg provides a locator for correct placement of the fasteners and helps keep the molding laying flat on the wall. Matching manufacturing plant miter-cut, solid-soldered inside and outside corners are available, giving you moisture management confidence throughout the entire installation.

**Note:** This drawing is supplied solely to assist in the selection and application of product manufactured by Stockton Products. This drawing is generic in nature and should not be used in design or construction without an independent evaluation by a qualified Architect or Engineer of Record.

©2021 Stockton Products. All rights reserved worldwide. Product illustrations are for reference only. Rev 113021  
CALIFORNIA RESIDENTS: Please review our Prop 65 statement at [stpro.us/P65](http://stpro.us/P65) or visit [www.P65Warnings.ca.gov](http://www.P65Warnings.ca.gov)