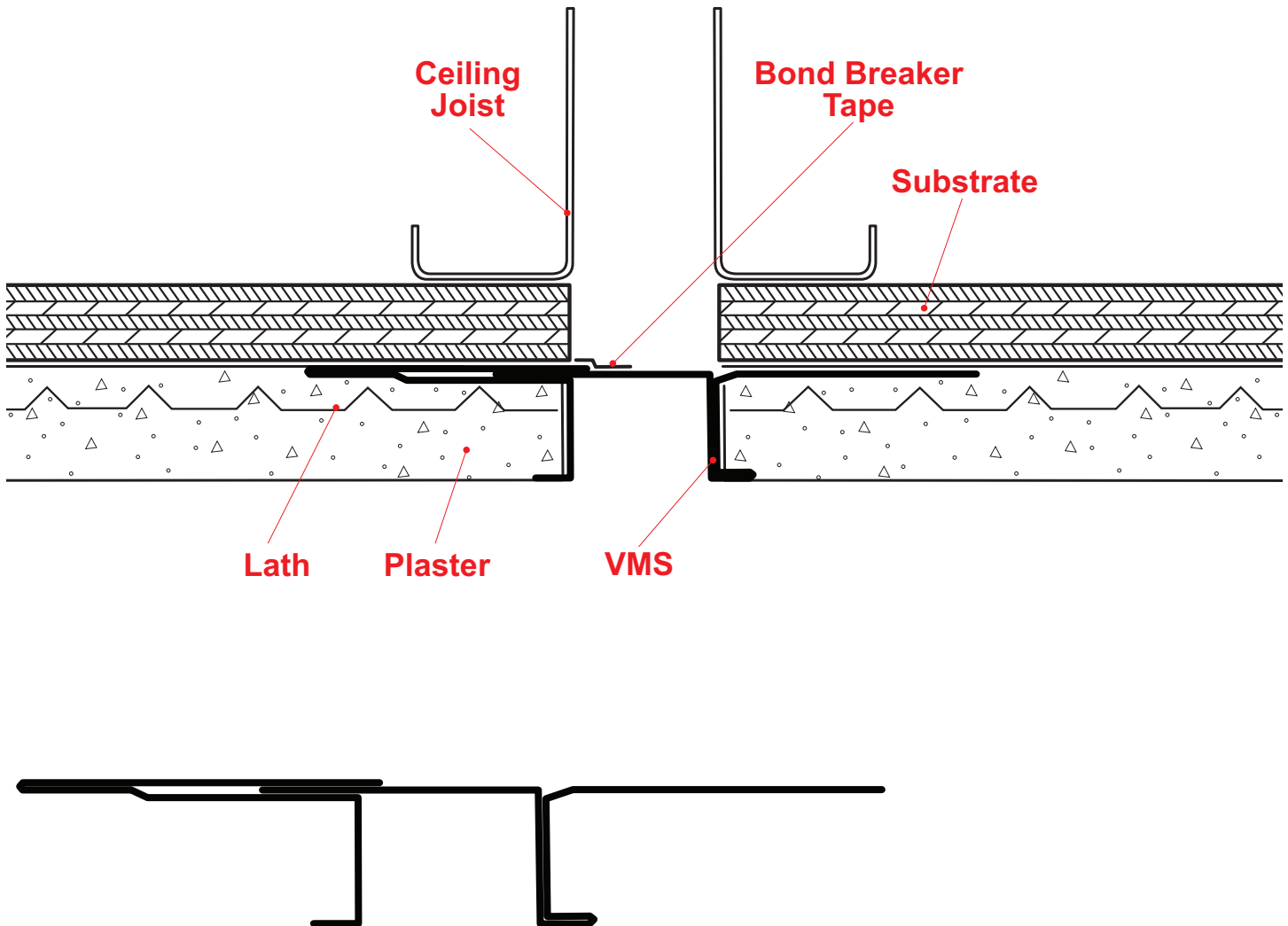


VMS: Vertical M-Slide Expansion Joint® - 2 Piece

US Patent 7,673,421 B2



The unique hem design stops moisture penetration in a horizontal condition. The two-piece design also allows for movement. Special "Step" on the attachment leg provides a locator for correct placement of the fasteners and helps keep the molding laying flat on the wall.

This trim installed in a vertical orientation requires a sealant joint over bond breaker tape at the channel recess, to prevent water from working around the vertical lapped edge between the two pieces.

Note: This drawing is supplied solely to assist in the selection and application of product manufactured by Stockton Products. This drawing is generic in nature and should not be used in design or construction without an independent evaluation by a qualified Architect or Engineer of Record.

©2024 Stockton Products. All rights reserved worldwide. Product illustrations are for reference only. Rev 111924

CALIFORNIA RESIDENTS: Please review our Prop 65 statement at stpro.us/P65 or visit www.P65Warnings.ca.gov