



**CUSTOM LENGTHS AVAILABLE!**

Stockton Custom Fabrication

877-786-2587

custom@StocktonProducts.com

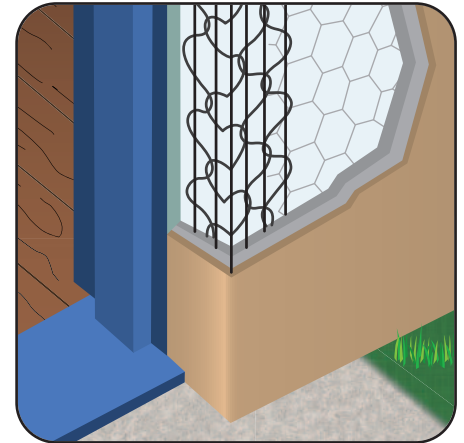
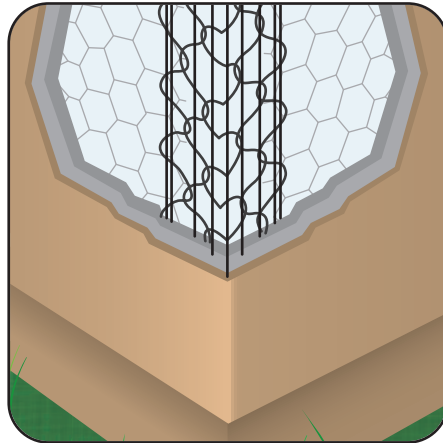


## SAIL: StockAid® II

- Available in Galvanized or Stainless Steel
- DoubleWire has an additional line wire on the outside edges to provide additional nail points. Three nose wire lower cost product used for exterior corner reinforcing with conventional 3-coat 7/8" stucco. Available in stainless steel to be used with absolute confidence in high humidity and salt air environments. Nominally 2 3/8" legs.

### Most Common Part Numbers

<b>SAII10</b>	SAIL: GS, 10'
<b>SAII10SS</b>	SAIL: SS, 10'

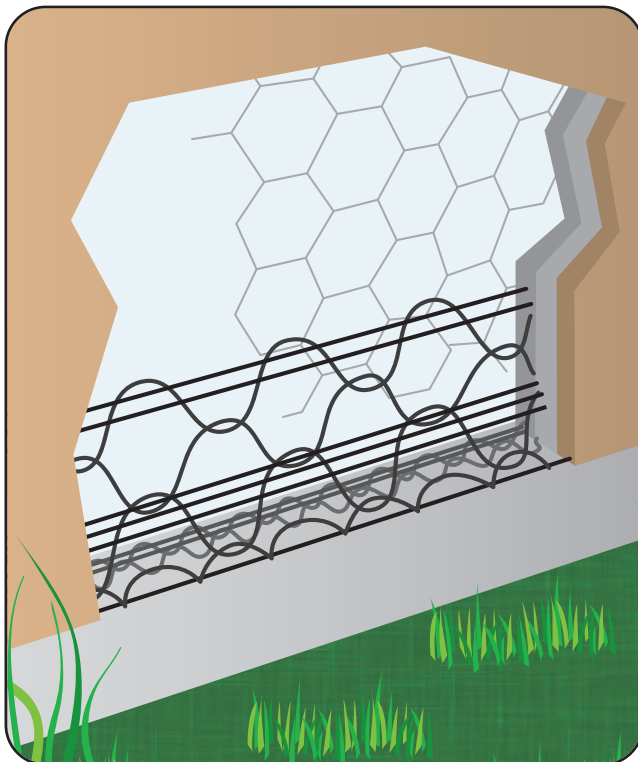


## SF: Short Flange

- Available in Galvanized or Stainless Steel
- Shaped for exterior or interior corners on doors, windows and panel systems where a short flange or stop is needed. It offers one nominally 2 3/8" leg and one short 1 1/2" leg. Available in stainless steel to be used with absolute confidence in high humidity and salt air environments.

### Most Common Part Numbers

<b>SF10</b>	SF: GS, 10'
<b>SF10SS</b>	SF: SS, 10'



## WA: WeepAid®

- Available In 7/8" and 1 1/2" Flange
- Available in Galvanized

Designed to act as a foundation screed for conventional 3-coat 7/8" stucco, WeepAid® maximizes the weep area and reduces the opportunity for stucco to stain or crack. Allows any moisture that gets behind the stucco to drain. Easy to tailor and trim. Can be used to form pop-outs around windows and doors as well as other "Ginger-Bread" details.



### Most Common Part Numbers

<b>WA7810</b>	WeepAid®: 7/8", GS, 10'
<b>WA11210</b>	WeepAid®: 1 1/2", GS, 10'

**877-786-2587 • StocktonProducts.com**

**19**